

May 23 - 30, 2014
Lakewood, GBCA & Pensacola
Yacht Clubs
 Seabrook, TX

2014 EMERALD COAST REGATTA - RACE, STAY AND PLAY

Cran Fraser
Executive Vice President
Office 832-209-4864
cfrazer@hayscompanies.com

10333 Richmond, Ste 720
Houston, TX 77042
Fax 832-209-4865

2014 EMERALD COAST REGATTA
GALVESTON TO PENSACOLA

Hays
 Marine, Energy, Construction, Logistics and Petroleum
 Distribution Insurance

Hays

GALVESTON TO MOUTH OF MISSISSIPPI RIVER

Hays

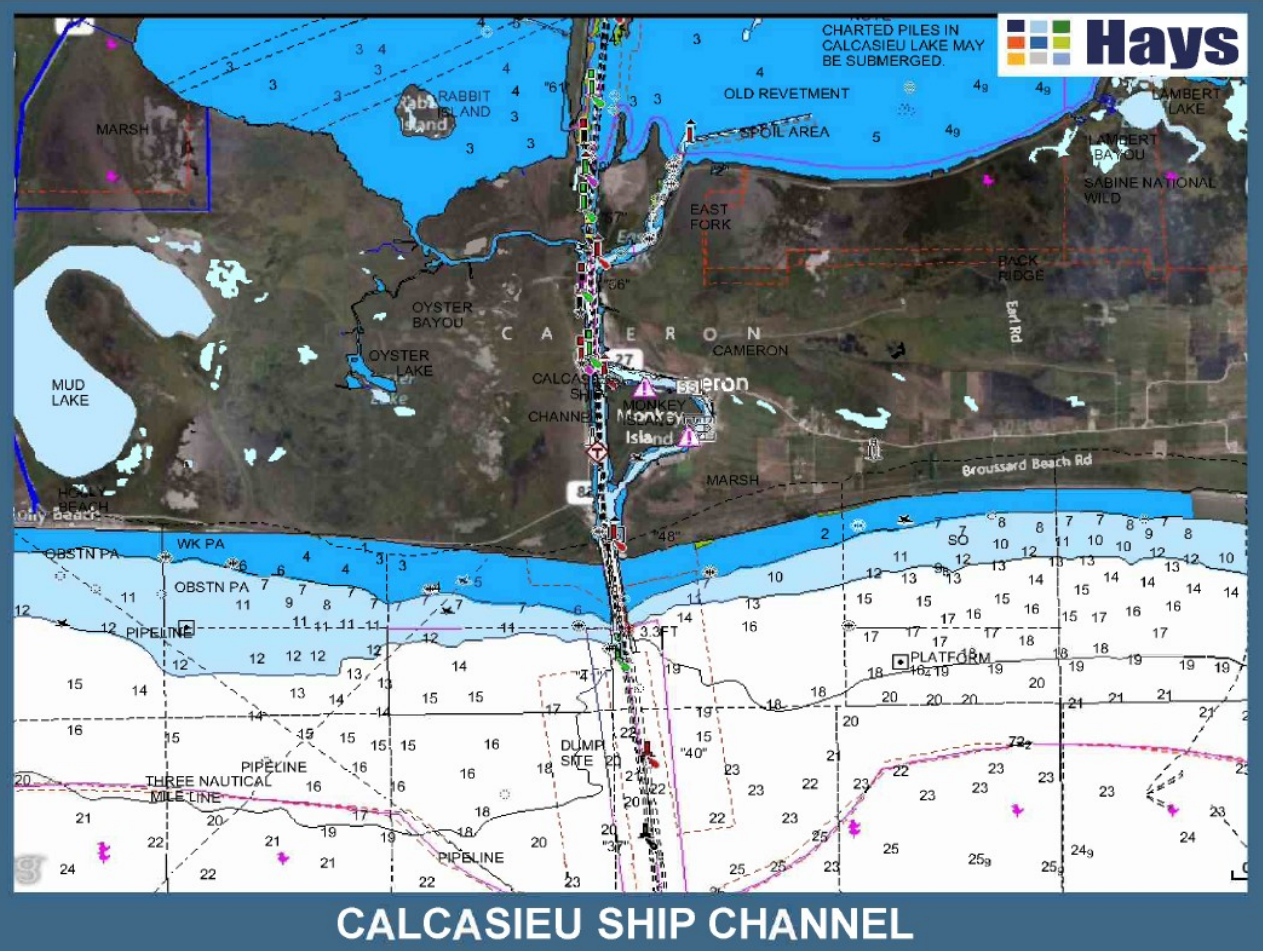
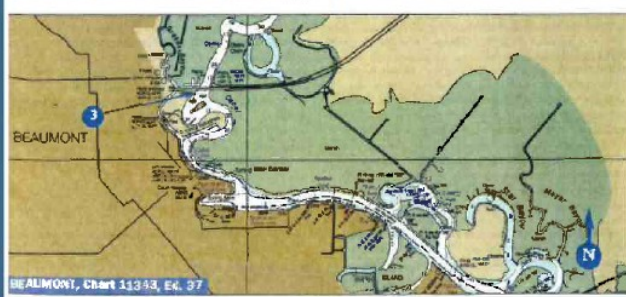
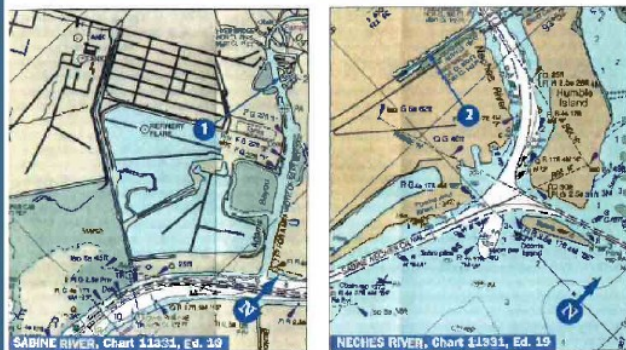
SABINE TO CALCASIEU PASS

Hays

SABINE ENTRANCE

Sabine and Neches Rivers, Beaumont (TX)

SABINE AND NECHES RIVERS		Dockage		Supplies		Services	
1. Danny Richard Marina*	337-893-2157	65	8/5	GI	HP	1/30	
2. Shell Morgan Landing Inc.	337-893-1211	200	7/7	GD	GIMS	C	1/30 S GM
3. Bridge Point Yacht Center	337-436-0803	75	12/12	GD	M HEP	L35	B/50 LS GM

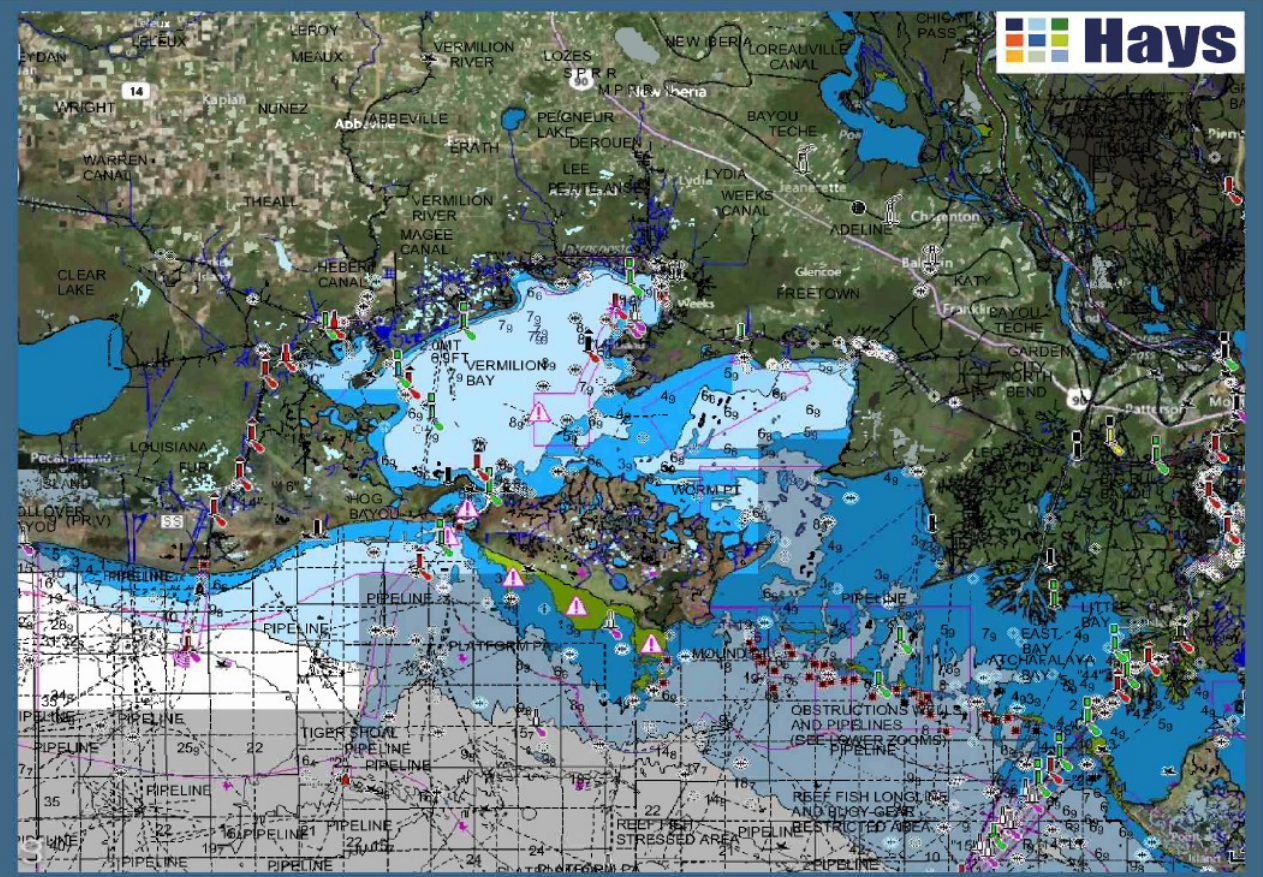
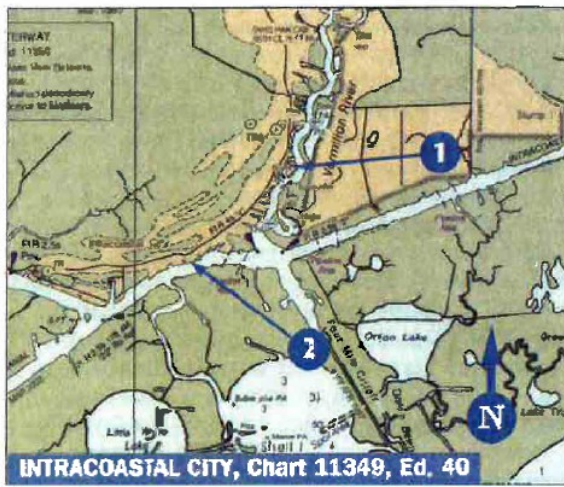
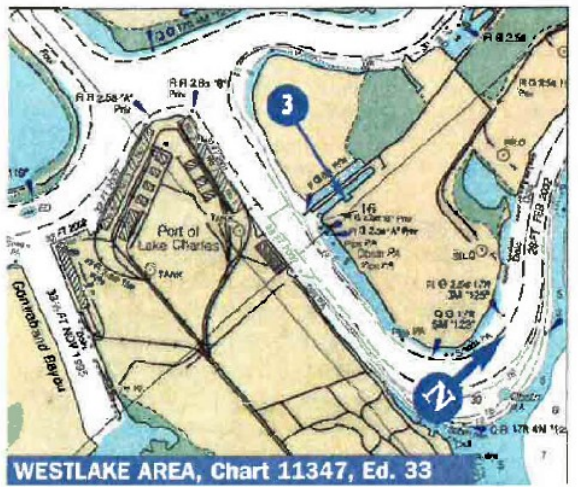


CALCASIEU SHIP CHANNEL

Vermilion and Calcasieu Rivers

WESTLAKE AREA & INTRACOASTAL CITY		Dockage		Supplies		Services	
1. Danny Richard Marina*	337-893-2157	65	8/5	GI	HP	1/30	
2. Shell Morgan Landing Inc.	337-893-1211	200	7/7	GD	GIMS	C	1/30 S GM
3. Bridge Point Yacht Center	337-436-0803	75	12/12	GD	M HEP	L35	B/50 LS GM

*Facility did not respond to survey. Corresponding chart(s) not to be used for navigation. Internet Access Wireless internet Access



VERMILION BAY- INTRACOASTAL CITY