



Coconut Grove Sailing Club

2014 North American Championship Regatta

SAILING INSTRUCTIONS

The 470 North American Championship for Men and Mixed Crews, and the Women's 470 North American Championship for Women Crews

The 49er SEIKO North American Championship for Open Crews, and the 49erFX SIEKO North American Championship for Open Crews

The Nacra 17 North American Championship

The International 420 North American Championship

The RS:X US National Championship for Men (9.5 sail) and the RS:X US National Championship for Women (8.5 sail) and Youth Open (8.5 sail)

The Formula 16 North America Multihull Olympic Development (MOD) Championship, for Open Crews

January 18 – 20, 2014 – Miami, Florida
Coconut Grove Sailing Club (CGSC)

The Organizing Authority is the Coconut Grove Sailing Club.

1. **RULES**

- 1.1 The regatta will be governed by the *rules* as defined in the current Racing Rules of Sailing for 2013-2016 (*RRS*).
- 1.2 The Equipment Rules of Sailing will apply to the extent they are referenced into the respective Class Rules.
- 1.3 No Class Rule change will apply.
- 1.4 For all Classes except International 420's, Formula 16's and RS:X Open Youth, only the following Prescriptions of USSailing will apply: *RRS 61.4, Appendix R*, and the prescriptions to *RRS 67, 70.5(a) and 76.1*.

- 1.5 This is a World Youth Qualifier event for International 420's, Formula 16's and RS:X Open Youth. Consequently, for these classes this is a Protected Competition as defined by USSA Regulation 12.03 PROTECTED COMPETITIONS. The US SAILING Prescriptions to *RRS 60, 63.2* and *63.4* shall apply except that the words "when practicable" in the first sentence of the prescription to *RRS 63.4* are deleted. The following Prescriptions of USSA will also apply: *RRS 61.4, Appendix R*, and the USSA Prescriptions to *RRS 67, 70.5(a)* and *76.1*. No other USSA Prescriptions will apply. See the Regatta Notice Boards located on the first floor of the Coconut Grove Sailing Club (CGSC) and at Miami Rowing Club for a copy of these Prescriptions.
- 1.6 If there is a conflict between a rule in the Notice of Race and these Sailing Instructions (SI), the Sailing Instructions will take precedence. (This changes *RRS 63.7*.) If there is a conflict between a Class Rule and these Sailing Instructions, the Sailing Instructions will take precedence to the extent allowed by the Class Rules.
- 1.7 Attention of participating 470's and I-420's is drawn to Class Rules which modify *RRS 42* under certain conditions. In this regard, The Race Committee will display Race Signals as provided in *RRS P5*. Such signals apply to the 470 and/or I-420 fleets only.
- 1.8 If there is a conflict between languages the English text will take precedence.

2. NOTICES TO COMPETITORS

Notices to competitors will be posted on the official Notice Board located on the first floor of the Coconut Grove Sailing Club, and by e-mail to all competing boats affected by the Notice. Failure of a boat to receive or read such e-mail will not be grounds for redress. (This changes *RRS 62.1(a)*.)

3. CHANGES TO SAILING INSTRUCTIONS

- 3.1 Any written change to these Sailing Instructions will be posted as provided in SI 2, above, no later than 90 minutes before the first Warning Signal on the day it will take effect, except that any changes in the Schedule of Races will be posted by the protest time limit on the day before they take effect (see SI 15.2).
- 3.2 Oral changes to the Sailing Instructions may be given on the water. The Race Committee Signal Boat shall display Code Flag "L" and announce the change in accordance with *RRS 90.2(c)*. Competitors shall approach the Committee Boat and verbally receive the change while Code Flag "L" is displayed.

4. SIGNALS MADE ASHORE

- 4.1 Signals made ashore will be displayed from the main flagpole at the Coconut Grove Sailing Club, at the Miami Rowing Club, and notification will be sent to competing boats by e-mail.
- 4.2 Code Flag "L", when displayed ashore signifies that a change in Sailing Instructions or other Notice to competitors has been posted on the Official Bulletin Board and e-mailed to competing boats affected by the Notice.
- 4.3 Code Flag "AP" when displayed ashore means that the start has been postponed. In that case, "1 minute" is replaced with "not less than 60 minutes" in Race Signals AP.

5. **SCHEDULE OF RACES**

5.1 First Warning Signal on the CGSC Circle, 1100 daily

First Warning Signal on the Multihull Circle, 1200 daily

Saturday, January 18

North Circle: 49er First Warning Signal, 1030

49er FX First Warning Signal, 1300

Sunday, January 19

North Circle: 49erFX First Warning Signal, 1030

49er First Warning Signal, 1300

Monday, January 20

North Circle: 49er First Warning Signal, 1030

49erFX First Warning Signal, 1300

NOTE: Trophy presentation at CGSC with appetizers and free keg, 1830

5.2 The Race Committee Finishing Boat will display Flag "A" while boats are finishing to indicate "No more racing today." If Flag "A" is not displayed, boats should return to the starting area in anticipation of another race to follow.

5.3 On the final day of the regatta, no INITIAL Warning Signal will be made later than 1600 hours.

6. **FORMAT OF RACING and PENALTY SYSTEM**

6.1 The makeup of starts and classes will be announced at the Competitors Meeting on Thursday, January 17th at 1800 at CGSC (See NOR 6.1). It is anticipated that all 470's will start together, as will all RS:X Windsurfers and all catamarans.

The 49er and FX Class entrants will race as two separate classes with separate starts and scoring. The Mens/Mixed and Womens 470's will race together but be scored separately. The I-420's will race together and be scored together. The RS:X 8.5's and 9.5's will race together but be scored separately. The Nacra 17's and Formula 16's will race together but be scored separately.

6.2 No more than four races will be sailed per day. There will not be a Medal Race.

6.3 Eleven (11) races are scheduled for the 49ers and FX's. Nine races are scheduled for all other classes. Three races shall be completed to constitute a regatta.

6.4 Appendix P shall apply for the entire regatta.

6.5 For the 49er and 49erFX classes, RRS 44.1 and Appendix P 2.1 are changed so that the Two-Turns penalty is replaced by a One-Turn penalty

6.6 Unless the course is shortened to finish at the windward mark, penalties within three (3) boat lengths of the windward mark or on the Offset Leg if used may be delayed and taken as soon as possible on the subsequent leg. This changes RRS 44.2

7. **CLASS FLAGS**

Class Flags for all classes will be displayed at the Competitors' Meeting.

8. **RACING AREAS**

There will be three racing areas. (See Addendum 1.) For the 49er and 49erFX, classes shore-based at the Miami Rowing Club, racing will be on the North Circle on Biscayne Bay east of the "Quick Flash" Marker (Qk Fl R 12ft "2"). Quick Flash is located approximately 0.5 nm east of the seaward end of the Seaplane Channel which is north of the Dinner Key Channel.

For the Nacra 17 and Formula 16 classes, also shore-based at Miami Rowing Club, racing will be on the Multihull Circle on Biscayne Bay SSE of the North Circle and west of Marker Fl G 2.5s 16ft "1" off the west shore of Key Biscayne.

For the 470 Class shore-based at the USSailing Center and the I-420 and RS:X Classes shore-based at CGSC, racing will be on the CGSC Circle on Biscayne Bay approximately 1 to 3 miles SSE of Brennan Channel Marker "1" (Fl.G 5sec 8ft).

9. **THE COURSES**

9.1 The Courses and their designations will be as described in Addendum 2 - COURSE ILLUSTRATIONS .

9.2 Courses will be posted on a Race Committee Signal Boat course board prior to the first Warning Signal of each race. The designation of the course to be sailed, the approximate magnetic compass bearing, and distance from the starting line to the first mark will be displayed (This changes *RRS 27.1*).

9.3 Course Designations:

COURSE W

49ers, 49er FX, and RS:X: Start – 1 - 4S/4P – 1– Finish W

All other classes: Start – 1– OS - 4S/4P – 1 -OS – Finish W

COURSE O – Start – 1– OS - 2 – 3S/3P – 2 – 3S/3P – Finish T

COURSE I – Start – 1 - OS - 4S/4P – 1 –OS - 2- 3S/3P – Finish T

9.4 The interior angle between Marks 1 and 2 for Courses O and I will be approximately 70 degrees. The interior angle between Mark 3P and Finish T for those Courses will be approximately 110 deg.

9.5 If Marks 4S/4P are present, they will not be marks of the course for boats on their last leg to the finish of Course W.

10. **MARKS**

10.1 North Circle - Original Windward Marks and the Leeward Gate Marks will be round orange inflatable Marks. New Marks will be green tetrahedron inflatable Marks.

CGSC Circle - Original Windward Marks and the Leeward Gate Marks will be 5.5 ft. orange inflatable tetrahedron Marks. New Marks will be yellow inflatable tetrahedron Marks.

Multihull Circle - All Marks will be yellow West Marine Marks.

- 10.2 If one of the Leeward Gate Marks is missing, boats shall round the one remaining Leeward Mark to port.
- 10.3 The Starting Mark (if set, see SI 11.2, below) and the Finishing Mark will be 5 ft. yellow inflatable round or tetrahedron Marks.

11. THE START

- 11.1 A Class who's Warning Signal has not been made shall avoid the starting area during the starting sequence of the other Classes.
- 11.2 The starting line will be between a staff displaying an orange flag on the Race Committee Signal Boat and a staff displaying an orange flag on a port end Line Boat or the course side of a yellow inflatable Mark.
- 11.3 Competitors should be aware that two or more Classes may be started together. Competitors are requested to pay attention to the Class Flags displayed with the Warning Signal for each starting sequence. By way of example: All RS:X Classes, Men's/Mixed and Women's 470, Nacra 17's and Formula 16's.
- 11.4 The Race Committee Signal Boat may deploy a stand-off buoy attached to the boat. Such buoy shall be tethered to the stern of the Signal Boat and/or the Port Line boat and will function as an extension of that boat.
- 11.5 A boat starting later than four minutes after her starting signal will be scored Did Not Start (DNS) without a hearing. (This changes RRS A4.)
- 11.6. Boats whose sail numbers are displayed as BFD by a Race Committee boat close to Mark 1 following a Black Flag start are to clear the race course.

12. CHANGING THE NEXT LEG OF THE COURSE

To change the next leg of the course, the Race Committee will lay a new Mark (or move the finish line) and remove the old Mark as soon as practicable. When in a subsequent change a new Mark is replaced, it will be replaced by an original Mark.

13. THE FINISH

The Finish Line will be between a staff displaying an orange flag on a Race Committee boat and a staff displaying an orange flag on a nearby support Boat, or the course side of a yellow inflatable finishing Mark.

14. TIME LIMITS

- 14.1 The time limit and target time for each class (in minutes) are as follows:

----Time Limits----

<u>Class</u>	<u>First Mark</u>	<u>Race</u>	<u>Target Time</u>
470 & I-420	30	90	45
RS:X	15	50	30
49er&FX	20	45	30

- 14.2 Any race in which no boat in a Class rounds the first mark within the above First Mark Time Limit following the start or finishes within the Race Time Limit following the start will be abandoned.
- 14.3 Any boats not finishing within 15 minutes of the finish time of the first boat in her Class (which has sailed the course in compliance with *RRS 28*) will be scored Did Not Finish without a hearing. This changes *RRS 35, A4 and A5*.
- 14.4 Failure to meet the target time will not be grounds for redress. This changes *RRS 62.1(a)*.

15. **PROTESTS AND REQUESTS FOR REDRESS**

- 15.1 A boat intending to protest should, if practicable, inform the Race Committee immediately after finishing a race and provide the identity of the protested boat(s).
- 15.2 Protest forms will be available at the Protest Desk at CGSC. Protests and Requests for Redress shall meet the requirements of *RRS 61* and be delivered to the Protest Desk in person or by e-mail to richard.etkin@gmail.com within the protest time limit.
- 15.2.1 The time limit is one (1) hour after the Race Committee Finish Boat docks or when a race is abandoned ashore.
- 15.2.2 Notices will be posted promptly following expiration of the protest time limit to inform competitors of hearings in which they are parties or named as witnesses. Protest hearings will be conducted at CGSC as soon as possible and in the approximate order in which they were filed.
- 15.2.3 The Race Committee will post a list of boats that have been given starting penalties or other Race Committee actions. If this list is posted prior to the filing deadline, Requests for Redress based on this posting shall be filed no later than thirty (30) minutes after the protest time limit. This changes *RRS 62.2*
- 15.3 Notices of protests by the Race Committee or Protest Committee will be posted to inform boats under *RRS 61.1(b)*.
- 15.4 It is each boat's sole responsibility to check the Regatta Notice Board at CGSC or its e-mail promptly after the end of the protest filing time to see if she is cited in a protest. Should any party fail to appear when called for a hearing, the Protest Committee may proceed in accordance with *RRS 63.3(b)*.
- Representatives of boats who are parties to hearings and their witnesses shall remain on call in the vicinity of the Protest Desk until excused by the Protest Committee.
- 15.5 On the last scheduled day of racing, a request for reopening a hearing shall be delivered:
- a) Within the protest time limit if the requesting party was informed of the decision on the previous day;
- b) No later than 30 minutes after the requesting party was informed of the decision on that day. This changes *RRS 66*.

On the last scheduled day of racing, a request for redress based on a protest committee decision shall be delivered no later than thirty (30) minutes after the decision was posted. This changes *RRS 62.2*.

15.6 Breaches of Sailing Instruction 19 or *RRS* 55 will not be grounds for protest by a boat. (This changes *RRS* 60.1.)

15.7 The actions of media boats will not be grounds for redress. (This changes *RRS* 62.1(a).)

16. **SCORING**

16.1 The Low Point Scoring System, as provided in *RRS* Appendix "A" shall apply, except as changed in these Sailing Instructions, as follows.

16.2 When fewer than six races have been completed, a boat's score will be the total of her race scores. (This changes *RRS* A2.)

16.3 When six or more races have been completed, a boat's series score will be the total of her race scores excluding her worst score.

17. **PRIZES**

Trophies will be awarded to the top three finishers in each class scored, except that if less than five (5) boats are entered in a scoring class scored, only a first place trophy will be awarded.

18. **SUPPORT AND COACH BOATS**

18.1 Except when rendering assistance to a boat in danger at the boat's request or at the request of the Race Committee, support and coach boats shall stay 100 meters outside areas where boats are racing from the time of the Preparatory Signal for the first Class to start until the time the last boat finishes or the Race Committee signals a postponement, general recall or abandonment.

18.2 Support and coach boats shall be marked with national letters or a country flag.

18.3 A hearing may be called if a coach boat fails to comply with the requirements of this SI 18. The penalty for failing to comply with these requirements or the oral instructions of the Race Committee or the Protest Committee will be at the discretion of the Protest Committee. The penalty may be imposed on any or all boats associated with the support or coach boat.

19. **SAFETY REQUIREMENTS**

19.1 Competitors shall wear adequate personal buoyancy while on the water, other than for brief periods while adding or removing clothing.

19.2 A boat that retires from a race or does not intend to start a scheduled race shall promptly report this to the Race Committee via hailing and receive acknowledgement. If this is not possible, she shall promptly report her actions to the Protest Desk on shore at CGSC.

19.3 Boats that are not leaving the harbor to race shall inform the Protest Desk prior to the start of the first race of that day.

19.4 Prior to the Warning Signal of the first race she sails each day, each boat shall sail on starboard tack past the stern of the Signal Boat, and shall hail her sail number until acknowledged by the Race Committee. Failure to comply with this SI will result in a three place penalty in the first race that day without a hearing. (This changes *RRS* 63.1.)

20. RADIO COMMUNICATION

A boat shall neither make radio transmissions while racing nor receive radio communication not available to all boats. This restriction also applies to mobile phone cell phone calls and text messages.

21. DISCLAIMER OF LIABILITY

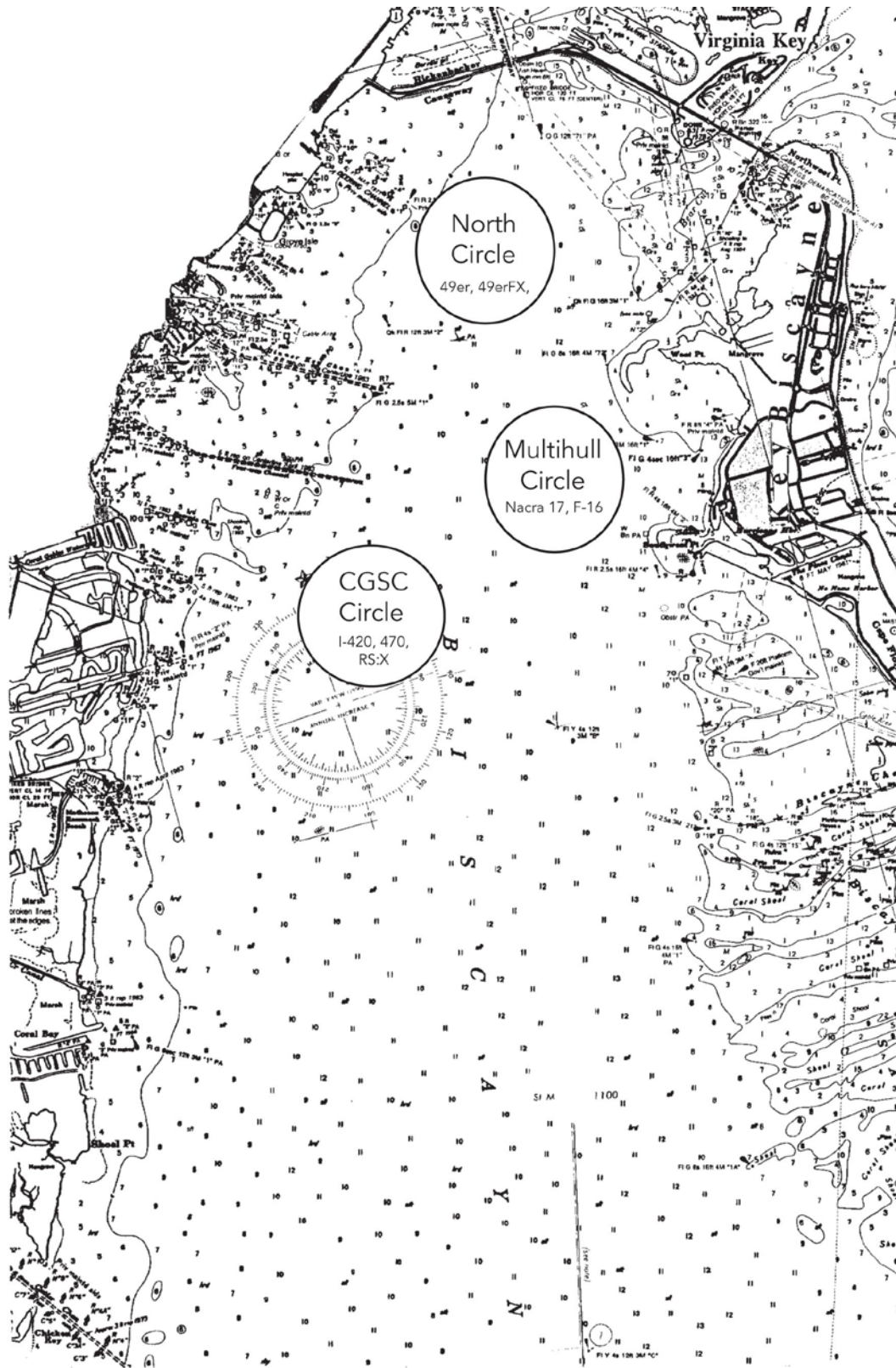
Competitors participate in the regatta entirely at their own risk. See *RRS 4, Decision to Race*. The Organizing Authority, Race Committee, host club, and their officers, employees and volunteers will not accept any liability for material damage or personal injury or death sustained in conjunction with or prior to, during, or after the regatta.

22. INSURANCE

Each participating boat shall be insured with valid third-party insurance with a minimum cover of US\$300,000 per occurrence or the equivalent.

ADDENDUM 1

RACING AREAS



ADDENDUM 2

COURSE ILLUSTRATIONS

EXAMPLE COURSE BOARD – R/C SIGNAL BOAT

<u>BEARING</u>	<u>CLASS COURSE</u>	
120°	470	O
<u>RANGE</u>	49er	W
0.8 NM	FX	W

Wind



Note: No Mark OS for 49er and 49erFX

