

**THE BORDER RUN INTERNATIONAL SAILING EVENT™**  
**February 22-23, 2014**  
**XS Racing, South Shore and Dana Point Yacht Clubs**  
**Newport Beach, CA**

**SAILING INSTRUCTIONS**

The Border Run International Sailing Event™ is brought to you by XS Racing. The organizing authority for The Border Run International Sailing Event™ is South Shore Yacht Club (SSYC) P.O. Box 1174, Newport Beach, CA 92659.

**1. RULES**

**1.1** This race will be governed by the rules as defined in the International Sailing Federation (ISAF) Racing Rules of Sailing (RRS) 2013-2016.

**1.2** The following prescriptions of the United States national authority, US SAILING, that will apply are stated in full below:

**1.2.1** Rule 68 – Damages. US SAILING prescribes that:

(a) A boat that retires from a race or accepts a penalty does not by that action alone admit liability for damages.

(b) A protest committee shall find facts and make decisions only in compliance with the rules. No protest committee or US SAILING Appeals authority shall adjudicate any claim for damages. Such a claim is subject to the jurisdiction of the courts.

(c) A basic purpose of the rules is to prevent contact between boats. By participating in an event governed by the rules, a boat agrees that responsibility for damages arising from any breach of the rules shall be based on fault as determined by application of the rules, and that she shall not be governed by the legal doctrine of “assumption of risk” for monetary damages resulting from contact with other boats.

**1.2.2** Rule 76.1 – Exclusion of Boats or Competitors. US SAILING prescribes that an Organizing Authority or race committee shall not reject or cancel the entry of a boat or exclude a competitor eligible under the Notice of Race and Sailing Instructions for an arbitrary or capricious reason, or for the reason of race, color, national origin, gender, sexual orientation, or age.

**1.2.3** Rule 76.3 – Exclusion of Boats or Competitors – US SAILING prescribes that a boat whose entry is rejected or cancelled or a competitor who is excluded from a race or series shall, upon written request, be entitled to a hearing conducted by the protest committee under rules 63.2, 63.3, 63.4 and 63.6.

**1.2.4** Appendix F, Procedure for Appeals and Requests – See US SAILING RRS Appendix F for full text.

**1.3** For boats with movable ballast, rule 51 is waived, but only with respect to the shifting of their declared and measured ballast, and rule 52 is also waived, but only with respect to the shifting of that ballast. All ballast systems shall also be capable of manual operation.

**1.4** National letters of country identification are not required. This changes rule 77 and rule G.1. (b).

**1.5** The notification requirements of rule 61.1 are satisfied for all filed protests other than Part 2 RRS protests by posting protests pending on either the Official Race Results Board or the Official Notice Board adjacent to the Official Results Board, or both. This changes rule 61.1.

**1.6** The Performance Handicap Racing Fleet (PHRF) Marine Industry Racer (MIR) rule shall not apply to any fleets in this event.

**1.7** All boats must meet US Coast Guard requirements appropriate to their vessel.

**1.8** All (PHRF) mono-hulls shall comply with the PHRF Category 2 Standard Equipment list.

**1.8.1** All (XS Racing) mono-hulls shall comply with XS Racing equipment list.

**1.9** All multi-hulls shall comply with their class equipment and requirements list as either:

**1.9.1** ORCA Ocean Racing Catamaran Equipment List.

**1.9.2** XS Racing Equipment List.

**Beach Cat multi-hulls**

**1.9.3** In addition to (1.9, 1.12, 1.13, 1.14) must carry running lights (minimum clip on), 2 paddles or 2 hp motor, flare kit, die marker and each crew member must wear a USCG approved life preserver with attached strobe light, one hand held flare, whistle and die marker.

**1.10** All Shadow Boat Class Entries must:

**1.10.1** Submit a sailing resume showing off-shore over night experience.

**1.10.2** Supply their own shadow boat that is capable of acting as a First Responder Rescue Assistance Vessel.

**1.10.3** Skipper and all crew must be 18 years of age or older.

**1.10.4** Each entry (Skipper and all Crew) must turn in a signed liability release form.

**THE BORDER RUN INTERNATIONAL SAILING EVENT™**  
**February 22-23, 2014**  
**XS Racing, South Shore and Dana Point Yacht Clubs**  
**Newport Beach, CA**

**SAILING INSTRUCTIONS**

**1.10.5** In addition to (1.10, 1.12,1.13,1.14) must carry running lights (minimum clip on), 2 paddles or 2 hp motor, flare kit, die marker, SPOT or other personal locator beacon device and each crew member must wear a USCG approved life preserver with attached strobe light, one hand held flare, whistle and die marker.

**1.11** In addition to complying with their class and equipment rules:

**1.11.1** All boats shall carry a GPS.

**1.11.2** All boats shall carry a hand held VHF marine band radio.

**1.11.3** All boats shall carry one cell phone.

**1.12** All boats (other than shadow boat class or Dana Point Sprint course racers) shall have a minimum LOA of 18 ft.

**1.13** All boats racing PHRF classes shall have a current, valid PHRF Rating issued by the fleet handicapping authority of the classes and sub-classes in which they are competing. Boats with a PHRF rating shall present their racing certificate.

**1.13.1** Boats without a rating will be assigned a rating by XS Racing.

**1.14** All entrants under the age of 18 years must have parental permission to participate in the Dana Point Sprint Course. The race participant's parent is wholly responsible for the safety of the vessel, skipper and crew while on the race course.

**1.14.1** The parent/guardian is wholly responsible for monitoring the under-aged skipper and vessel's position and safety at ALL times via radio, phone or line of sight.

**1.14.2** The parent/guardian is wholly responsible for monitoring the weather conditions on the day of the race and to decide for the under-aged sailor whether it is safe to participate in the race AND return to a safe harbor.

**1.14.3** If the parent/guardian decides to have a chase boat or other craft to monitor the under-age sailor, the parent/guardian must declare to the Race Committee that there will be a chase boat on the race course and will be doing so at their own risk.

**1.14.4** The parent/guardian must notify the Race Committee immediately upon arrival of the under-aged skipper when he/she docks in a safe harbor INCLUDING the chase boat and crew if one is used by the parent/guardian. Please call the Race Committee at (949) 349-9322.

**1.14.5** The Border Run and Race Committee do not supply and is not responsible for chase boats on the Dana Point Sprint, San Diego or Coronado Courses.

**2. ADVERTISING**

**2.1** Competitor advertising will be restricted as follows: ISAF Regulation 20.9 will be modified to allow advertising of a company if the boat owner and skipper are major shareholders of the company advertising.

**2.2** Boats may be required to display advertising supplied by the Organizing Authority in accordance with ISAF Regulation 20.4.

**3. CHANGES TO SAILING INSTRUCTIONS**

**3.1** Any changes to the Sailing Instructions will be posted at SSYC, on the SSYC ([www.southshoreyc.org](http://www.southshoreyc.org)) website and The Border Run web site ([www.theborderrun.org](http://www.theborderrun.org)) by 5:00 PM, Friday, February 21<sup>st</sup>, 2014.

**4. SIGNALS MADE FROM SHORE**

**4.1** If a start postponement causes a return to shore and the "AP" flag is flown from ashore at South Shore Yacht Club, the "1 minute" will be replaced by "60 minutes".

**THE BORDER RUN INTERNATIONAL SAILING EVENT™**  
**February 22-23, 2014**  
**XS Racing, South Shore and Dana Point Yacht Clubs**  
**Newport Beach, CA**

**SAILING INSTRUCTIONS**

**5. CLASSES, STARTING ORDER, CLASS FLAG**

5.1 Final Class breaks are published by Friday February 21 at 5pm on Regatta Network:

DP Course:

[http://www.regattanetwork.com/clubmgmt/applet\\_registrant\\_list.php?regatta\\_id=7521&custom\\_report\\_id=2](http://www.regattanetwork.com/clubmgmt/applet_registrant_list.php?regatta_id=7521&custom_report_id=2)

SD Course:

[http://www.regattanetwork.com/clubmgmt/applet\\_registrant\\_list.php?regatta\\_id=7522&custom\\_report\\_id=2](http://www.regattanetwork.com/clubmgmt/applet_registrant_list.php?regatta_id=7522&custom_report_id=2)

Coronado Course:

[http://www.regattanetwork.com/clubmgmt/applet\\_registrant\\_list.php?regatta\\_id=7523&custom\\_report\\_id=2](http://www.regattanetwork.com/clubmgmt/applet_registrant_list.php?regatta_id=7523&custom_report_id=2)

See Appendix "A" for Gate and Course assignments.

5.2 All sub classes will start with their assigned base class.

5.3 Entrants are responsible for knowing their starting class, and are required to display their class flag while racing.

5.4 Cruising classes are **NOT** allowed to run their engine during the race.

5.5 All entrants shall check-in at the check-in boat located at the Balboa Pier and can use Channel 69 once race operations begin.

**6. INSPECTIONS**

6.1 XS Racing /SSYC may inspect any (non-shadow boat class) mono-hull boat that has finished the race for compliance with the PHRF Standard Equipment List for Category 2 Races, US Coast Guard Equipment, and other equipment referenced in Sailing Instructions 1.7 through 1.12.

6.2 XS Racing / SSYC may inspect a (non-shadow boat class) multi-hull boat that has finished the race for compliance with the ORCA or XS Racing Equipment List for Coastal Race, US Coast Guard Equipment, and the GPS referenced in NOR 1.9

6.3 XS Racing / SSYC may inspect any XS Racing Beach Cat and / or Shadow boat class boat that finished the race for compliance with the equipment and requirements set forth in the Sailing Instructions.

6.4 Boats failing to comply with their Equipment List requirements may be protested and a penalty including disqualification may be imposed.

**7. THE COURSES**

The three courses are defined as the Coronado, San Diego, and Dana Point Sprint as set below:

7.1 **Coronado Course** racers will start off of Balboa Pier in Newport Beach, CA and sail to the Coronado Islands, leaving the small island (Coronado del Norte) to Port. Sail to San Diego channel Buoy R "8" FI R 2.5s, leaving it to port, then finish between buoy R "8" and the Race Committee Boat outside San Diego Harbor. Finish as directed in Paragraph 9.

7.1.1 For scoring purposes, the handicap distance is 91 nautical miles.

7.2 **San Diego Course** racers will start off of Balboa Pier in Newport Beach, CA and sail to the San Diego Harbor Entrance leaving "SD" whistle buoy (labeled SD, at 32° 37.34' N by 117° 14.75' W) to Port and finish between buoy R "8" and the Race Committee Boat outside San Diego Harbor. Finish as directed in Paragraph 9.

7.2.1 For scoring purposes, the handicap distance is 70 nautical miles.

7.3 XS Racing Beach Cat and Shadow Boat classes can only sail the San Diego or Dana Point Sprint course.

7.4 **Dana Point Sprint Course** racers will start off of Balboa Pier in Newport Beach, CA and race to the Dana Point Harbor leaving to port the Dana Point red whistle buoy SJR (FLR 2.5 sec.) labeled as "W" at 33° 27.30' N by 117° 43.30' W. Finish as directed in Paragraph 9.

7.4.1 For scoring purposes, the handicap distance is 14 nautical miles.

**8. THE START**

8.1 The starting line will be a line between an orange flag on the race committee boat and an inshore orange tetrahedron in the water. The inshore tetrahedron will be stationed approximately 200 yards off of Balboa Pier.

8.2 The first warning will be given at 10:55 PT.

8.3 The start will be in accordance with RRS Rule 26, as a rolling 5 minute start in a reverse order.

8.4 For all vessels over early (OCS) – Individual and group recalls will be made in accordance with RRS 29.1 and 29.2 respectively. The race committee will attempt to hail sail numbers on VHF Channel 68; however, neither the timing of this hail, equipment failure or the failure of a yacht to hear the hail shall be cause for redress from the protest committee.

**THE BORDER RUN INTERNATIONAL SAILING EVENT™**  
**February 22-23, 2014**  
**XS Racing, South Shore and Dana Point Yacht Clubs**  
**Newport Beach, CA**

**SAILING INSTRUCTIONS**

**8.5** Check-in – Each entry shall check in by coming within hail of the check-in boat (prior to 10:50 PT) and hailing their class and sail number to the committee members. Check-in is not complete until the race committee has acknowledged your hail. You may also check-in with the check-in boat on Channel 69 once race operations have commenced. The check-in boat will be stationed approx. 200 yards outside of the Race Committee boat. Please do not try to check-in with the Race committee boat, only the designated check-in boat.

**9. THE FINISH**

**9.1** When the lead yacht of the leading class in the Coronado and San Diego Courses is within one hour of the finish, she is requested to so advise the Race Committee by calling (949) 349-9322.

**9.2** The Coronado Course and San Diego Course finish line shall be between a staff displaying an orange flag on the Race Committee Boat at the starboard end and buoy R “8” at the port end of the finish line. The buoy R “8” is located at 32° 39’ 55.209” N by 117° 13’ 35.492” W FL R 2.5s. See the attached finish diagram.

**9.3** The Sprint Course finish line at Dana Point shall be approximately 150 yards off the Dana Point jetty at a green lighted buoy “G-1” (FLG 2.5 sec.) at approximately 33° 27.10’ N by 117° 41.90’ W.

**9.4** The Sprint Course finish line shall be between a staff displaying an orange flag on the Race Committee Boat at the starboard end and the course side of the green light buoy “G-1” mark at the port end. A proper finish will leave the Race Committee boat to starboard. **DO NOT CONFUSE this buoy with the entrance light to Dana Point harbor.**

**9.5** In the unlikely event that the Race Committee Boat is not on station, competitors must record their own finish times by creating a WAYPOINT or MOB (Man Over Board) with their GPS while finishing within 2 boat length of G “1” for the Sprint Course and within 2 boat length of R “8” for the San Diego and Coronado Courses. You are to report your finish time by e-mailing [TheBorderRunRC@gmail.com](mailto:TheBorderRunRC@gmail.com) (preferred) or by calling (949) 690-3531 (leave a message between 12:00 AM and 6:00 AM). In either case, please report your skipper’s name, boat name, sail number and your finish time using the 24-hour format, e.g. 14:31:22 and date.

**10. TIME LIMIT**

**10.1** The Time Limit for the Coronado and San Diego Courses is 1400 hours, Sunday, February 23<sup>rd</sup>, 2014. All boats not finishing before the Time Limit will be scored Did Not Finish (DNF). This changes Rule 35.

**10.2** The Time Limit for the Dana Point Sprint Course is 1800 hours, Saturday, February 22<sup>nd</sup>, 2014. All boats not finishing before the Time Limit will be scored Did Not Finish (DNF). This changes Rule 35.

**10.3** All boats that have not or will not be finishing by the time limit are required to notify the race committee of their location and intentions by speaking with the race committee on VHF Channel 68 or via phone at **(949) 690-3531**.

**11. RETIREMENTS**

**11.1** All vessels that retire from the race shall notify the race committee as soon as practical (but in all cases prior to the finish time limit) by notifying the race office by phone at **(949) 349-9322** or **(949) 690-3531**.

**12. PENALTY SYSTEM**

Rule 44.3 will be used for Part 2 violations. A one (1) hour time adjustment penalty can be taken in lieu of a non disqualifying penalty for Coronado and San Diego Course entries. A 10-minute time adjustment penalty can be taken in lieu of a non disqualifying penalty for Dana Point Sprint Course entries.

**13. PROTESTS AND REQUESTS FOR REDRESS**

**13.1** All protests on the Coronado and San Diego Courses must be filed (in writing) at the Race Committee desk at The Bay Club Marina and Resort (the earlier of) 2 hours after the protesting boats finish or 1 hour after the race time limit.

**13.2** All protests on the Dana Point Sprint Course must be filed (in writing) at the Race Committee desk at Dana Point Yacht Club by (the earlier of) 2 hours after the protesting boats finish or 1 hour after the race time limit.

**THE BORDER RUN INTERNATIONAL SAILING EVENT™**  
**February 22-23, 2014**  
**XS Racing, South Shore and Dana Point Yacht Clubs**  
**Newport Beach, CA**

**SAILING INSTRUCTIONS**

**14. SCORING SYSTEM**

**14.1** For trophies awarded on Corrected Time, positions will be calculated as follows:

**14.1.1** IRC and ORR time allowances will be calculated using time-on-time scoring.

**14.1.2** All other Corrected Time allowances will be calculated using time-on-distance scoring, based on the boat's PHRF Base Off Wind Course (OWC) Ratings, PHRF non-Spinnaker Offsets as described in instruction 25, and the races' handicap distances.

**14.1.3** Boats with the lowest Corrected Time in their class (after application of time penalties, if any) will be scored in first place.

**14.1.4** Dinghies in the Dana Point Sprint Course will be scored using Portsmouth ratings.

**14.2** For trophies awarded on Elapsed Time:

**14.2.1** Results will be calculated using the boat's class start time and actual finish time.

**14.2.2** Boats with the lowest Elapsed Time (after application of time penalties, if any) will be scored in first place.

**15. PRIZES**

Trophies for Coronado and San Diego Courses will be awarded at the Trophy Party after the race on Sunday, February 23<sup>rd</sup> at The Bay Club Resort and Marina in San Diego at 2500 Shelter Island Drive. The Trophy presentation will begin at 1600 hours.

**15.1** The number of trophies is based on the number of starters as follows:

1 – 5 Starters = 2 trophies

6 – 9 Starters = 3 trophies

10 – 14 Starters = 4 trophies

15+ Starters = 5 trophies

Trophies for the Dana Point Sprint Course racers will be awarded at the Trophy Party after the race on Saturday, February 22<sup>nd</sup>, 2014 at Dana Point Yacht Club in Dana Point at 24399 Dana Drive. The trophy presentation will begin at 1930 hours.

**16. INSURANCE**

Each participating boat shall be insured with valid combined single limit watercraft liability insurance in an amount not less than \$300,000 personal injury and personal property damage of \$100,000.

**17. DISCLAIMER OF LIABILITY**

Competitors participate in this Race entirely at their own risk. Please see rule 4 (Decision to Race). The Organizing Authority will not accept liability for damage or personal injury or death sustained in conjunction with, prior to, during, or after this Race. Each boat owner must sign a race entry form releasing all liability on the part of race organizers, their sponsors, contractors and anyone affiliated with the event.

**18. RIGHT TO USE NAME AND LIKENESS**

By participating in The Border Run International Sailing Event™, a competitor automatically grants to the organizers and its sponsors the right, in perpetuity, to make, use, and show from time to time at their discretion, any still or motion pictures and live, taped, or filmed television and other reproductions of him or her without compensation.

**19. CONTACT INFORMATION**

The Race Committee will monitor and make any on the water announcements on VHF marine channel 68. After the start, the Race Committee can be reached at (949) 349-9322 and Channel 68 for retirements.

**20. RACE CANCELLATION**

At its discretion, the Race Committee may abandon the race. The Committee Boats will display appropriate signals (RRS 32 and RRS Race Signals) and make radio announcements on Channel 68. Whether or not the Race Committee has abandoned the race, it is the responsibility of the skipper of each boat to determine if the weather conditions are a threat to the safety of the boat or crew, and if so, whether to participate or continue racing (RRS 4).

**THE BORDER RUN INTERNATIONAL SAILING EVENT™**  
**February 22-23, 2014**  
**XS Racing, South Shore and Dana Point Yacht Clubs**  
**Newport Beach, CA**

**SAILING INSTRUCTIONS**

**21. CRUISING CLASS ADJUSTMENTS**

In accordance with Appendix E, paragraph 4.0 of the PHRF Class Rules, a Cruising Class boat's Race Rating shall consist of the boat's PHRF base Off Wind Course (OWC) Rating as shown on the valid Rating Certificate, along with the adjustments shown in Appendix D of the PHRF Class Rules.

**23. CRUISING CLASS PERMITTED EQUIPMENT**

- 23.1 Whisker poles may be used and are limited in length to 1.4 times the "J" measurement. One end shall be attached to the foremost mast. This changes Appendix D, paragraph 3.0 (c) of the PHRF Class Rules.
- 23.2 Double headsails, double head rigs and multi-masted vessels are allowed
- 23.3 Power winches are allowed. This changes RRS 52.

**24. OTHER CRUISING CLASS REQUIREMENTS AND INFORMATION**

- 24.1 Competitors in the Cruising Classes are reminded that under the International Regulations for Preventing Collisions at sea (COLREGs) that they are required to exhibit a white masthead light aloft when under power and not racing.
- 24.2 Rig bands for the "P" and "E" measurement are not required. However, the mainsail must measure to the reported dimensions.
- 24.3 Sail dimensions are not required to be marked on the sails.
- 24.4 The U.S. SAILING or foreign National Authority or Class sail number may be displayed from the lifelines. If so displayed, they shall be displayed on both sides of the boat aft of the mainmast in a visible location. Minimum height of letters/numbers shall be 300mm (12 inches). This changes RRS Appendix G.
- 24.5 It is the responsibility of the skipper to notify the Organizing Authority (South Shore Yacht Club) consistent with listed instructions published in the Sailing Instructions – prior to racing – of ANY changes in equipment affecting the Adjustments referenced in SI 21 Cruising Class Adjustments. Additionally, skippers whose boat has a current, valid PHRF Rating shall notify PHRF of any changes to a boat's rated configuration. Failure to notify the Organizing Authority or PHRF, where required, may result in a protest and race disqualification and may further subject the skipper to a Rules Violation penalty as described in Appendix G of the PHRF Class Rules.

**25. CRUISING CLASS PHRF NON-SPINNAKER OFFSET**

The PHRF Non-Spinnaker Offset shall be added only to boats racing in one of the Non-Spinnaker Cruising Class. The Race Rating for a boat racing in a Non-Spinnaker Cruising class shall be the PHRF Base OWC Rating + PHRF Non-Spinnaker Offset + any Cruising Class Adjustment.

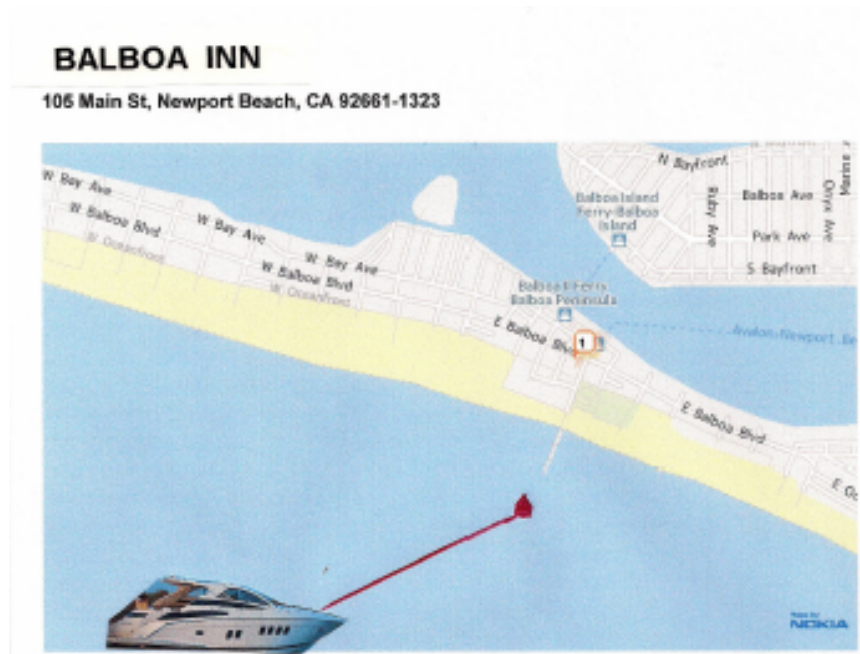
|                                      |   |  |                           |  |
|--------------------------------------|---|--|---------------------------|--|
| C<br>R<br>U<br>I<br>S<br>I<br>N<br>G | To enter a Cruising Class you must satisfy the Eligibility Requirements in the NOR. The assigned PHRF of Southern California (PHRF/SC) base Off-Wind Course (OWC) rating you entered above will be adjusted for this race based on how your vessel is equipped. |  |                           |  |
|                                      | <b>CRUISING CLASS EQUIPMENT</b>   |  |                           |  |
|                                      | Rating Adjustments that apply to your boat  |  |                           |  |
|                                      | <b>Propeller</b>  | <input type="checkbox"/> (+6) Two Blade Fixed          | <b>Mylar / Kevlar</b>     | <input type="checkbox"/> (-6) Mylar or Kevlar headsail |
|                                      |   | <input type="checkbox"/> (+9) Three Blade Fixed        |                           | <input type="checkbox"/> (-6) Mylar or Kevlar mainsail |
|                                      | <b>Head Sail</b>  | <input type="checkbox"/> (-6) Oversized/Dacron (>155%) | <b>Roller Furler Gear</b> | <input type="checkbox"/> (+6) Roller Furling headsail  |
|                                      |   | <input type="checkbox"/> (+9) Small/Dacron (<140%)     |                           | <input type="checkbox"/> (+9) Roller Furling mainsail  |
|                                      | <b>Enter Total Rating Adjustments</b>   |  |                           | <input type="checkbox"/>                               |



**THE BORDER RUN INTERNATIONAL SAILING EVENT™**  
**February 22-23, 2014**  
**XS Racing, South Shore and Dana Point Yacht Clubs**  
**Newport Beach, CA**

**SAILING INSTRUCTIONS**

**The Border Run Starting Line**  
**February 22, 2014**





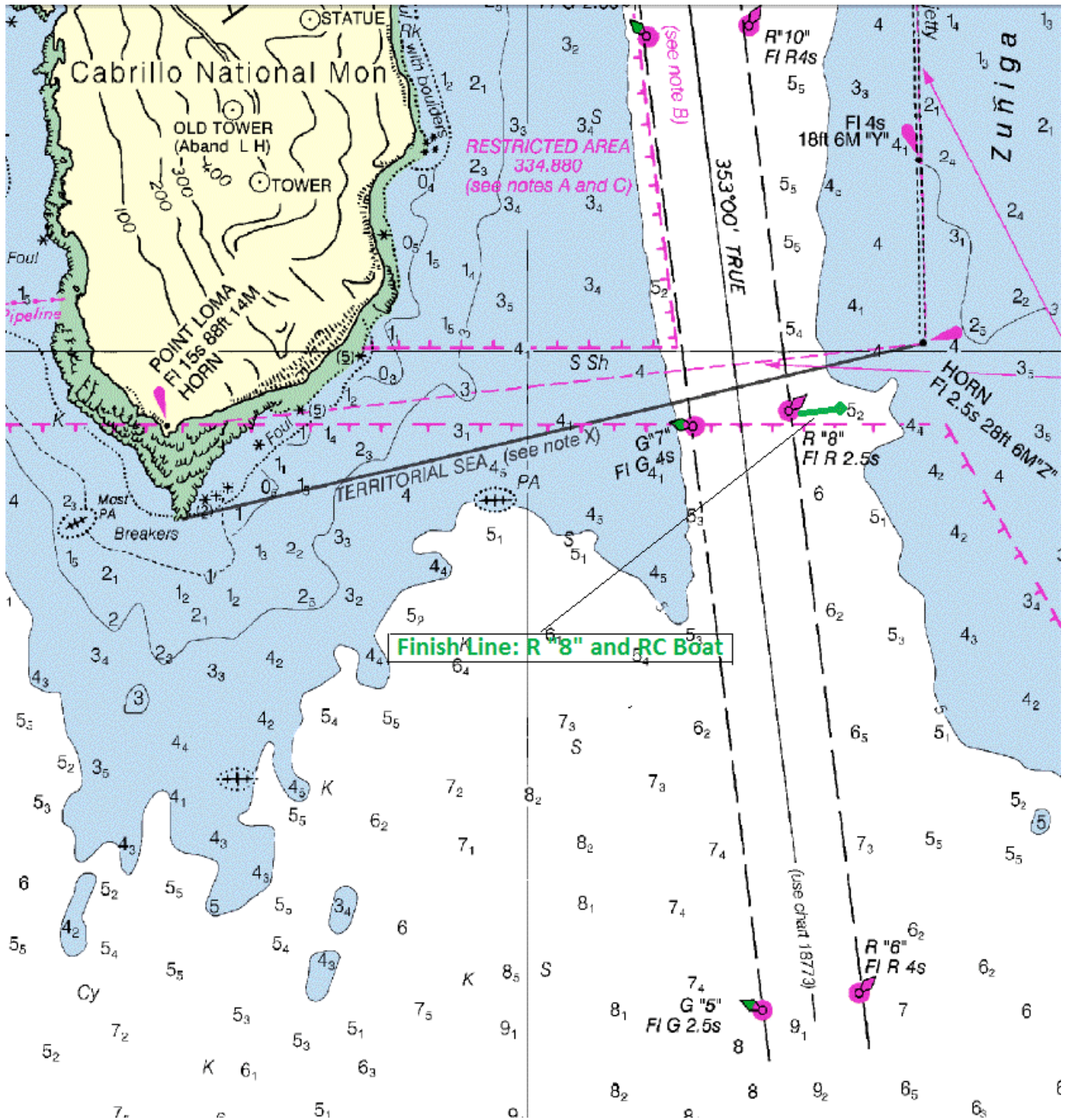
**THE BORDER RUN INTERNATIONAL SAILING EVENT™**  
**February 22-23, 2014**  
**XS Racing, South Shore and Dana Point Yacht Clubs**  
**Newport Beach, CA**

**SAILING INSTRUCTIONS**

**The Border Run Coronado/San Diego Course Finish**  
**February 22-23, 2014**

**THE BORDER RUN INTERNATIONAL SAILING EVENT™**  
**February 22-23, 2014**  
**XS Racing, South Shore and Dana Point Yacht Clubs**  
**Newport Beach, CA**

**SAILING INSTRUCTIONS**



**THE BORDER RUN INTERNATIONAL SAILING EVENT™  
February 22-23, 2014  
XS Racing, South Shore and Dana Point Yacht Clubs  
Newport Beach, CA**

**SAILING INSTRUCTIONS**

**The Border Run Dana Point Sprint Course Finish  
February 22, 2014**

