

J/70 NORTH AMERICAN CHAMPIONSHIP

July 14-20, 2014

Rochester, NY USA

Hosted by Rochester Yacht Club

Website: www.j70nac.com

The Organizing Authority is the Rochester Yacht Club and the J/70 Class Association (OA)

SAILING INSTRUCTIONS

09 JULY 2014

1 RULES

- 1.1. The regatta will be governed by the rules as defined in *The Racing Rules of Sailing* (RRS).
- 1.2. J/70 Class Rules (CR) 1 (Spare Gennaker) and 3 (Support Boats) of Section I are invoked.
- 1.3. Only the US Sailing prescriptions to RRS 40, 67, and 76.1 and added rules 61.4 and 82 will apply and are stated in full in SI Attachment B.
- 1.4. RRS 63.7 will be replaced by: "If there is a conflict between a rule in the Notice Of Race and one in the Sailing Instructions, the Sailing Instructions shall apply." This changes RRS 63.7.
- 1.5. RRS/US prescription Appendix T Section A (Penalties at the time of the Incident), Section B (Post-Race Penalties) and Section D (Arbitration) will apply. (See SI Attachment D.)
- 1.6. The Equipment Rules of Sailing will apply.
- 1.7. The international jury may impose suitable penalties, other than disqualification, for violations of the Class Rules, or other non-Part 2 rules of *The Racing Rules of Sailing*. This changes RRS 64.1(a)
- 1.8 RRS 42.3(c) is modified to allow the gennaker sheet to be played without restriction.

2 BOW NUMBERS/ EVENT IDENTIFICATION STICKERS

- 2.1 Boats shall display bow numbers and event bow stickers during the event as provided by the OA. They shall be attached to both sides of the boat's hull at all times while racing. Bow numbers and event bow stickers will be attached by the OA on every boat. It is the responsibility of the crew to ensure the numbers and stickers remain on the boat and obtain replacements as necessary.

3 NOTICES TO COMPETITORS

- 3.1 Notices to competitors will be posted on the official notice board(s) located at the south side of the RYC Junior Sailing Building.
- 3.2 Any questions regarding the sailing instructions shall be submitted in writing to the race committee PRO. The question(s) and any answers will be posted on the official notice board as soon as possible.

4 CHANGES TO SAILING INSTRUCTIONS

- 4.1 Any change to the sailing instructions will be posted before 0845 on the day it will take effect, except that any change to the schedule of races will be posted by 2000 on the day before it will take effect.

5 SIGNALS MADE ASHORE

- 5.1 Signals made ashore will be displayed at the RYC main flag pole on the north west corner of the property.
- 5.2 When flag AP is displayed ashore, '1 minute' is replaced with 'not less than 60 minutes' in the race signal AP. This changes RRS race signals.
 - 5.3.1 Flag B (BRAVO) hoisted with one sound signal means 60 minutes before the end of the protest time limit. When lowered with one sound means "Protest time has ended". This changes RRS race signals.

6 SCHEDULE

6.1

Day	Date	Event	Time
Mon	14 July	Registration and Measurement	0900-1700
Tues	15 July	Registration and Measurement	0900-1700
Wed	16 July	Registration and Measurement All boats shall be on site before 1200 Practice Starts and Practice Racing Social Event Competitors Meeting Opening Ceremonies All Boats Afloat	0900-1800 1200 first warning at 1300 1800 1800 1800 1800
Thurs	17 July	<i>US Sailing</i> Espresso Bar featuring Joe Bean Coffee Roasters Espresso (Burgee Bar) Skipper's Briefing (Burgee Bar) Racing Daily Awards/Social event/ <i>Saranac</i> beer <i>Saranac</i> beer tasting dinner at RYC Presented by Fred Matt of F.X. Matt Brewery	0700-0930 0830 first warning at 1030 15 minutes after drop of "B" flag 1900
Fri	18 July	<i>US Sailing</i> Espresso Bar featuring Joe Bean Coffee Roasters Espresso (Burgee Bar) Skipper's Briefing (Burgee Bar) Racing Daily Awards/Social event/ <i>Saranac</i> beer	0700-0930 0830 first warning at 1030 15 minutes after drop of "B" flag
Sat	19 July	<i>US Sailing</i> Espresso Bar featuring Joe Bean Coffee Roasters Espresso (Burgee Bar) Skipper's Briefing (Burgee Bar) Racing Daily Awards/Social event/ <i>Saranac</i> beer Buffet Dinner at RYC	0700-0930 0830 first warning at 1030 15 minutes after drop of "B" flag 1900

Sun	20 July	US Sailing Espresso Bar featuring Joe Bean Coffee Roasters Espresso (Burgee Bar)	0700-0930
		Skipper's Briefing (Burgee Bar)	0830
		Racing	first warning at 1030
		No warning signal after	1430
		Closing Ceremonies and Awards	15 minutes after drop of
		Haul Out after Racing	"B" flag

6.2 All boats will sail as one fleet.

6.3 A maximum of 4 races on any day may be sailed, maximum of 12 races for the regatta.

7 CLASS FLAGS

7.1 The J/70 Class Flag (Blue insignia on a white background) or numeral pennant 1 shall be used in accordance with RRS 26.

8 RACE AREA

See Sailing Instruction Attachment A

9 THE COURSES

9.1 The course to be sailed will be windward-leeward.

9.2 Spreader/offset marks and leeward gates will be used, as shown in SI Attachment C.

9.3 No later than the warning signal, the race committee signal boat will broadcast and display the course, bearing and distance to mark 1. Failure to broadcast or to receive this notification shall not constitute grounds for granting redress. This changes RRS 60.1(b) and 62.1(a).

9.4 The information will be arranged vertically.

Example:

5	<i>Course</i>
3	
0	<i>Approximate magnetic bearing to Mark 1</i>
0	
1.5	<i>Approximate distance to Mark 1. (nautical miles)</i>

9.5 Courses:

<i>Course 4</i>	<i>Start - 1 - 1a - Gate - 1 - 1a – Finish (Downwind)</i>
<i>Course 5</i>	<i>Start - 1 - 1a - Gate - 1 - 1a - Gate – Finish (Upwind)</i>
<i>Course 6</i>	<i>Start - 1 - 1a - Gate - 1 - 1a - Gate- 1 - 1a – Finish (Downwind)</i>

- 9.6 Marks 1 and 1a shall be left to port. Mark 1a is an offset mark and will be positioned to port of mark 1.
- 9.7 If only one gate mark is set, boats shall leave the single mark to port.
- 9.8 Except when there is a change of course, the gate will be positioned to windward of the RC signal boat.
- 9.9 The gate may be laid after the starting signal.
- 9.10 Except for when there is a change of course:
 (a) the downwind finish line for course 4 and 6 will be to leeward of the gate; and
 (b) the upwind finish line for course 5 will be to windward of mark 1.

10 MARKS

- 10.1 Description of the Marks:

	Original Marks	New Marks per SI 13
Mark 1	Orange Inflatable	Yellow Inflatable
Mark 1A	Orange Inflatable	Yellow Inflatable
GATE (2P/2S)	Orange Inflatable	Yellow Inflatable
Start	RC boats	RC boats
Finish	RC boats or RC boat and an inflatable mark	RC boats or RC boat and an inflatable mark

- 10.2 A race committee boat signaling a change of a leg of the course is a mark as provided in instruction 13.2.

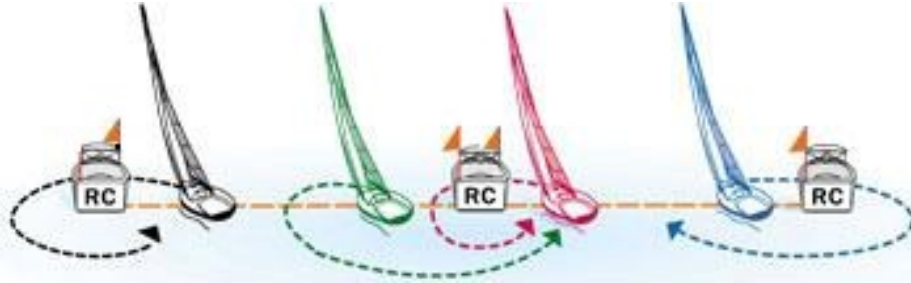
11 AREAS THAT ARE OBSTRUCTIONS

There are no areas that are obstructions

12 THE START

- 12.1 The RC signal boat will display code flag L (LIMA) with one sound as it departs from the harbour.
- 12.2 The Starting Line:
- 12.2.1 The starting line will consist of three RC boats: port end line boat, mid-line signal boat, and starboard end line boat.
- 12.2.2 The starting line will be two line segments: one between a staff displaying an orange flag on the mid-line signal boat and a staff displaying an orange flag on the port end line boat, the other between a staff displaying an orange flag on the mid-line signal boat and a staff displaying an orange flag on the starboard end line boat.

- 12.2.3 When RRS 30.1 (I Flag Rule) is in effect, boats subject to this rule shall thereafter either:
- sail from the course side across an extension of the starting line beyond either the port- or starboard-end line boat to the pre-course side before starting, or
 - round the mid-line signal boat before starting, leaving it to port. This changes RRS 30.1 (see the diagram below).



- 12.3 A boat starting later than 4 minutes after her starting signal will be scored Did Not Start without a hearing. This changes RRS A4 and A5.
- 12.4 Boats subject to individual recall (RRS 29.1) and boats disqualified under RRS 30.3 may be broadcast on the VHF channel using bow/sail numbers. This is in addition to and changes RRS 29.1 and 30.3.
- 12.5 The RC will attempt to broadcast twice the bow/sail numbers of all boats subject to individual recall (RRS 29.1); it will not alter the list based on a boat's actions subsequent to the start.
- 12.6 Individual and General Recall flags may be displayed additionally by the RC pin end starting line boats.
- 12.7. After a general recall for a start that used starting penalty RRS 30.2 (Z Flag Rule) the RC will attempt to broadcast the bow/sail numbers of boats that are observed to be ZFP.
- 12.8 Failure of the RC to make a broadcast or to time it accurately or the order of boat(s) hailed will not be grounds for granting a request for redress. This changes RRS 62.1(a).
- 12.9 RRS 30.3 is changed to permit the RC to display sail number and/or bow number. This changes RRS 30.3.

13 CHANGE OF THE NEXT LEG OF THE COURSE

- 13.1 To change the next leg of the course, the race committee will lay a new mark (or move the finishing line) and remove the original mark as soon as practicable. When in a subsequent change a new mark is replaced, it will be replaced by an original mark.
- 13.2 Except at a gate, boats shall pass between the RC boat signalling the change of the next leg and the nearby mark, leaving the mark to port and the RC boat to starboard. This changes RRS 28.

14 THE FINISH

- 14.1 For downwind finishes, the finishing line will be between a staff displaying an orange flag on the race committee boat and either:
- the course side of the nearby inflatable finishing mark, or
 - a staff displaying an orange flag on the nearby race committee boat.
- The finishing line will be located to leeward of the leeward gate.
- 14.2 For windward finishes, the finishing line will be between a staff displaying an orange flag on the race committee boat and either:

- (a) the course side of the nearby inflatable finishing mark, or
 - (b) a staff displaying an orange flag on the nearby race committee boat.
- The finishing line will be located to windward of the windward mark.
- 14.3 If the RC intends to start another race on the same day, it will display the flag R (ROMEO) with no sound while boats are finishing.

15 PENALTY SYSTEM

15.1 *PENALTIES AT THE TIME OF THE INCIDENT*

The first two sentences of rule 44.1 are changed to: ‘A boat may take a One-Turn Penalty when she may have broken a rule of Part 2 or rule 31 while *racing*. However, when she may have broken a rule of Part 2 while in the *zone* around a *mark* other than a starting *mark*, her penalty shall be a Two-Turns Penalty.’

- 15.2 Unless the course is shortened to finish at the windward mark, penalties while in the zone of the windward mark or on the offset leg shall be delayed and taken as soon as possible on the downwind leg. This changes RRS 44.2
- 15.3 The jury boats may be positioned anywhere on the course area. Their position at any time shall not be grounds for granting redress. This changes RRS 60.1(b) and 62.1(a).
- 15.4 A boat that has taken a penalty under RRS 31 or 44.1 shall complete an acknowledgment form at the jury office within the protest time limit.

16 TIME LIMITS AND TARGET TIMES

- 16.1 The target time for each race is 90 minutes. Failure to meet the target time will not be grounds for granting redress. This changes RRS 60.1(b) and 62.1(a).
- 16.2 Boats failing to finish within 30 minutes after the first boat sails the course and finishes will be scored “TLE” Time Limit Expired without a hearing. This changes RRS 35, A4 and A5. The RC will lower the blue flag with one sound to indicate that the finish line is closed.

17 PROTESTS AND REQUESTS FOR REDRESS

- 17.1 Protest forms are available at the jury office, located at the RYC Office building on the east side of the Club property. Protests and requests for redress or reopening shall be delivered there within the appropriate time limit.
- 17.2 The protest time limit is 60 minutes after flag B (BRAVO) is displayed ashore. This flag will be hoisted as soon as practical as the boats return to harbor. The same time limit applies to protests by the RC and jury about incidents they observe in the racing area and to requests for redress. This changes RRS 61.3 and 62.2.
- 17.3 Notices will be posted no later than 30 minutes after the protest time limit to inform competitors of hearings in which they are parties or named as witnesses. Hearings will be held in the protest room, located at the RYC Office Building, beginning at the time posted.
- 17.4 Notices of protests by the RC or jury will be posted to inform boats under RRS 61.1(b).

- 17.5 Breaches of SI 2, 15.4, 19, 23, 24, 25, and 26 will not be grounds for a protest by a boat. This changes RRS 60.1(a). Penalties for these breaches will be at the discretion of the jury.
- 17.6 On the last scheduled day of racing a request for reopening a hearing shall be delivered
- (a) within the protest time limit if the requesting party was informed of the decision on the previous day;
 - (b) no later than 30 minutes after the requesting party was informed of the decision on that day.
- This changes RRS 66.
- 17.7 On the last scheduled day of racing a request for redress based on a jury decision shall be delivered no later than 30 minutes after the decision was posted. This changes RRS 62.2.
- 17.8 Decisions of the international jury will be final as provided in RRS 70.5.

18 SCORING

- 18.1. In accordance with RRS 90.3 and Appendix A, scoring as per Appendix A2, except that no scores will be excluded. This changes RRS 90.3 and Appendix A.
- 18.2. Three (3) races are required to be completed to constitute a series.

19 SAFETY REGULATIONS

- 19.1 Boats that retire from a race shall notify the RC as soon as possible.
- 19.2 Boats that leave the racing area between races shall notify the RC as soon as possible.
- 19.3 Boats not leaving the harbor for any of the day's racing shall so inform the RC.
- 19.4 Boats shall not use dehumidifiers during the regatta

20 REPLACEMENT OF CREW OR EQUIPMENT


- 20.1 Substitution of competitors will not be allowed without prior written approval of the Race Committee.
- 20.2 Substitution of damaged or lost equipment will not be allowed unless authorized by the RC. Requests for substitution shall be made to the committee at the first reasonable opportunity.

21 EQUIPMENT AND MEASUREMENT CHECKS

- 21.1 A boat or equipment may be inspected at any time for compliance with the class rules and sailing instructions. On the water, a boat can be instructed by a measurer or RC equipment inspector to proceed immediately to a designated area for inspection.
- 21.2 In accordance with RRS G3, a boat chartered or loaned for this event may carry national letters or a sail number in contravention of the Class Rules.

22 OFFICIAL BOATS

Official boats will be marked as follows:

RC boats	
Jury boats	White Flag with Black 'J'
Press Boats	Yellow Flag with Black 'P'
RC Measurement/Equipment Check Boat	White Flag with a Black 'M'
VIP	White Flag with a Black 'VIP'

23 SUPPORT BOATS

23.1. Support boats shall comply with **CR I.3 SUPPORT BOATS** :

Individual support or coach boats shall not have contact of any nature, including:

(i) communication by radio, telephone, internet, vocal signal, visual signalling of any kind (i.e., tactical placement, use of flags and/or different colors of clothing) or (ii) the transfer of crew, equipment or supplies, with a registered racing boat from the time the boat leaves its dock or mooring each day until the boat has finished racing for the day. Notwithstanding the foregoing, (i) late arriving crew, food and drink may be transferred to a racing boat prior to the first race of the day, and (ii) crew may be transferred in the event of an unforeseen personal emergency.

Infringements of this rule will result in a penalty to the boat associated with the support boat.

Such penalty may be either penalties or disqualification at the discretion of the protest committee or jury.

23.2 Support Boats and operators shall register with the OA during registration.

24 BERTHING

24.1. Boats shall be kept in their assigned places as directed by the OA/RC when either afloat or ashore.

25 HAUL-OUT RESTRICTIONS AND OTHER RESTRICTIONS

25.1. Boats shall be afloat by 1800 Wednesday July 16.

25.2. Boats shall not be hauled out during the regatta, except with and according to the terms of prior written permission of the race committee.

25.3. Boats shall not be permitted to use electric dehumidifiers between 1800 on 16 July and 1800 on 20 July.

25.4. Underwater breathing apparatus or their equivalent shall not used while in the RYC basin or Genesee River. Free diving is also prohibited in the RYC basin and Genesee River.

25.5. Boats shall not remove their rudder during the regatta, except with and according to the terms of prior written permission of the race committee.

26 RADIO COMMUNICATION

- 26.1. Except in an emergency, a boat shall neither make radio transmissions while racing nor receive radio communications not available to all boats. This restriction also applies to mobile telephones.
- 26.2. The race committee will endeavor to hail each yacht that is OCS on VHF radio. The timing of such hail, the sequence of the hails, or the failure to make, or for the competitor to hear, such an announcement shall not be grounds for granting redress. This changes RRS 62.1(a).
- 26.3 The RC will use VHF radio, Channel 69 to communicate with the fleet.
- 26.4 It is strongly encouraged that each boat has a VHF radio on board capable of receiving channels 09, 16, 69, 71 and 72.

27 PRIZES

- 27.1 Prizes will be given to the top ten (10) finishers overall and the top five (5) finishers in the Corinthian division (see NOR 4.2).
- 27.2 Daily prizes will also be awarded.
- 27.3 Additional prizes may be awarded at the discretion of the Organizing Authority.

28 DISCLAIMER OF LIABILITY

28.1. Competitors participate in the regatta entirely at their own risk. See RRS 4, DECISION TO RACE. The Organizing Authority will not accept any liability for material damage or personal injury or death sustained in conjunction with or prior to, during, or after the regatta. Each person racing on board a boat entered in the regatta shall sign a waiver for loss, damage or injury to their person or property in conjunction with the regatta or while on the premises of the Rochester Yacht Club. The Rochester Yacht Club, the J/70 Class Association and their members, volunteers, employees, officers and agents shall not be responsible for any loss, damage or of the participation of any boat.

29 INSURANCE

29.1. Each participating boat shall be insured with valid third-party liability insurance with a minimum coverage of US \$300,000 per event or the equivalent. A copy of insurance company documents establishing that such coverage is current through the end of the regatta shall be supplied as part of completing registration.

30 RIGHTS TO USE NAME AND LIKENESS

30.1 Competitors grant the OA and the International J/70 Class Association the unrestricted right and permission to use the name and the image for any text, photograph or video footage of either themselves or the boat they are sailing during the event to be published or broadcast in any media whatsoever (including but not limited to Press and TV advertisements or Internet), for either editorial or advertising purposes or to be used in press information; in this respect, competitors' names and any biographical material of themselves may also be used or reproduced in any way known. As part of the registration process, each individual participating crewmember will be required to sign a declaration accepting this waiver of rights.

31 EVENT OFFICIALS

Event Co-chairs:

Ed Gardner, egard1029@aol.com, 585-704-3235

Ken Smith, lynnken@mac.com, 201-513-5597

International Jury Chairman:

Leo Reise (IJ-CAN)

Cell # 905-536-0145

Race Committee PRO:

Hank Stuart (IRO-USA)

hstuart8m@gmail.com

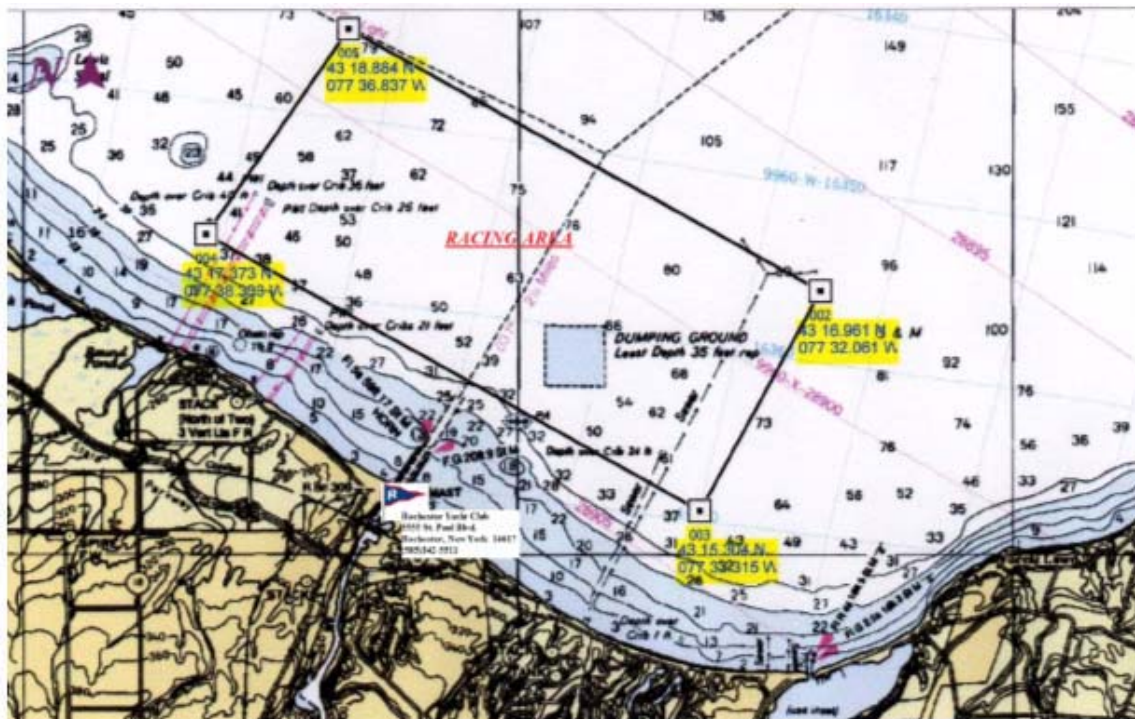
Cell # 585-414-6105

J/70 Class Executive Director:

Chris Howell

howell@j70office.com

ATTACHMET A RACING AREA and HARBOR LOCATION



NOT TO BE USED FOR NAVIGATION

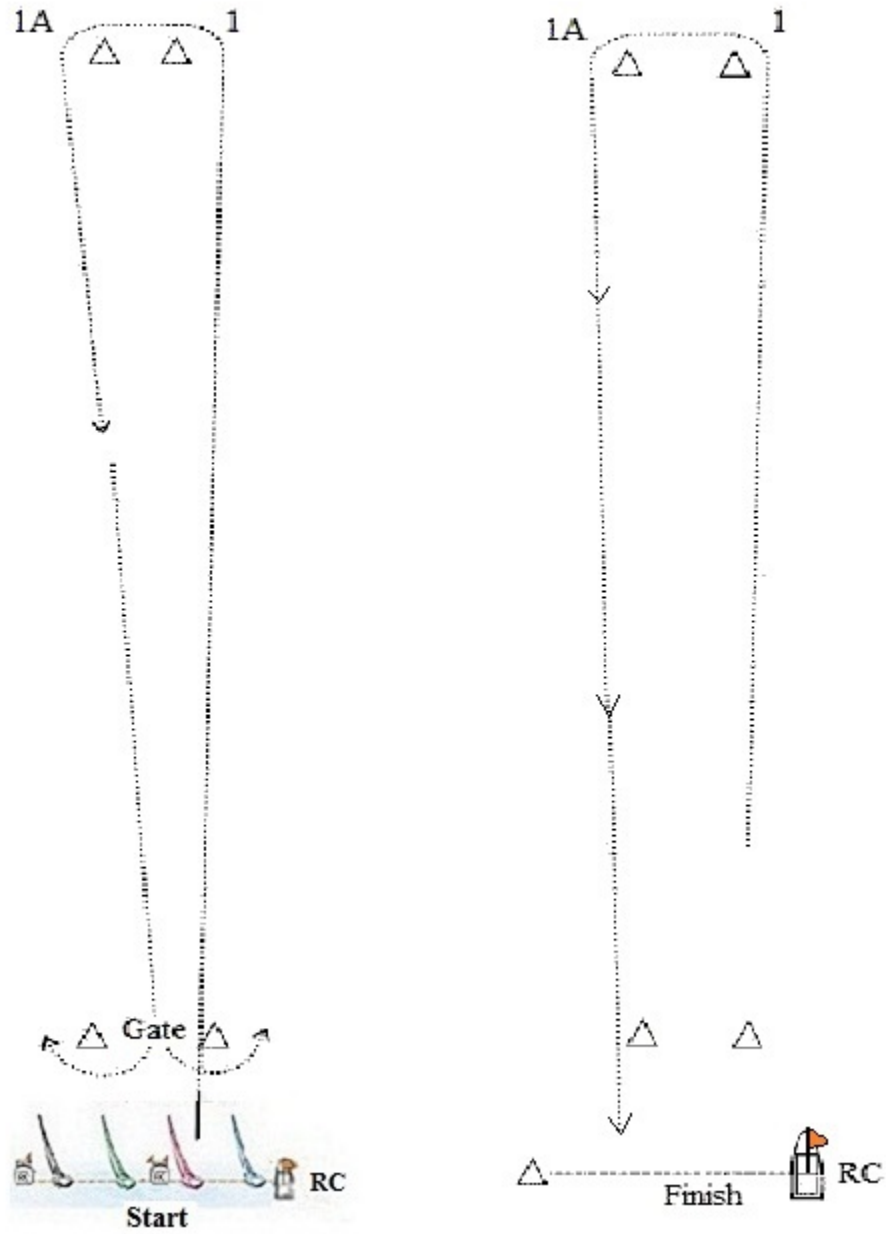
ATTACHMENT B US SAILING PRESCRIPTIONS

The following US Sailing prescriptions will apply:

1. Rule 40 – US Sailing prescribes that every boat shall carry life saving equipment conforming to government regulations that apply in the racing area. Go to www.ussailing.org/racingrules/documents and click the ‘PFD’ link for more information.
2. Rule 61.4 – US Sailing prescribes that no fee shall be charged for protest or request for redress.
3. Rule 67 – US Sailing prescribes that
 - a) A boat that retires from a race or accepts a penalty does not, by that action alone, admit liability for damages.
 - b) A protest committee shall find facts and make decisions only in compliance with the rules. No protest committee or US Sailing appeal authority shall adjudicate any claim for damages. Such a claim is subject to the jurisdiction of the courts.
 - c) A basic purpose of the rules is to prevent contact between boats. By participating in an event governed by the rules, a boat agrees that responsibility for damages arising from any breach of the rules shall be based on fault as determined by application of the rules, and that she shall not be governed by the legal doctrine of “assumption of risk” for monetary damages resulting from contact with other boats.
4. Rule 76.1 – US Sailing prescribes that an OA or RC shall not reject or cancel the entry of a boat or exclude a competitor eligible under the notice of race and sailing instructions for an arbitrary or capricious reason or for reason of race, color, religion, national origin, gender, sexual orientation, or age.
5. Rule 82 – Indemnification or hold harmless agreements
 - a) US Sailing prescribes that the organizing authority shall not require a competitor to assume any liabilities of the organizing authority, race committee, protest committee, host club, sponsors, or any other organization or official involved with the event. (This is commonly referred to as an “indemnification” or “hold harmless” agreement. Go to www.ussailing.org/racingrules/documents and click on the “indemnification” link for more information.

ATTACHMENT C – Example Course Illustrations
Illustrations of Course 4 and Course 5 for example
(Courses 6 not illustrated)

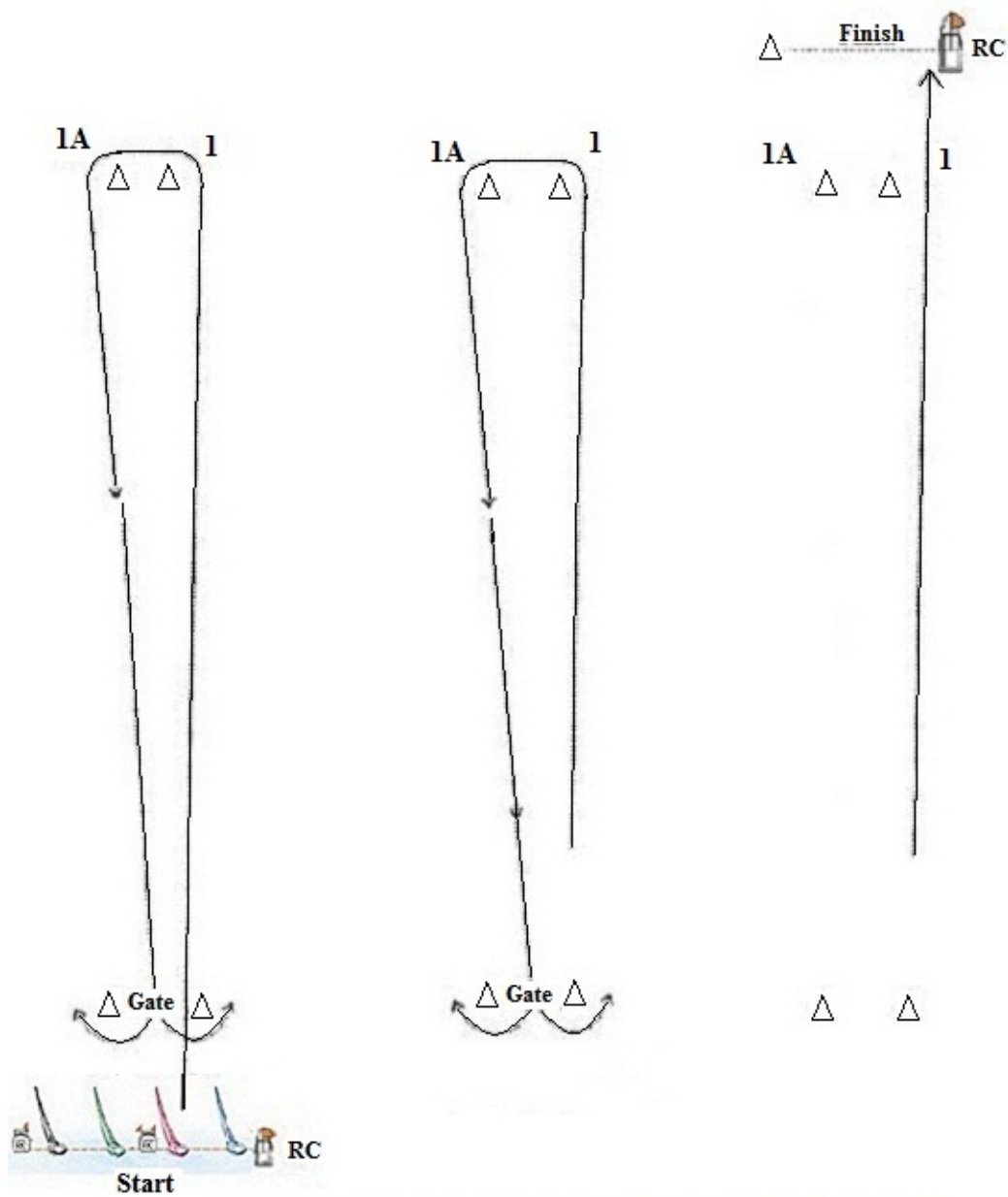
COURSE 4



Start – 1 – 1A – Gate(2S/2P) – 1 – 1A – Finish

**Finish may be between either the RC boat displaying an orange flag and a nearby mark
or
between two RC boats each displaying an orange flag.**

COURSE 5



Start - 1 - 1A - Gate (2S/2P) - 1 - 1A - Gate (2S/2P) - Finish

**Finish may be between either the RC boat displaying an orange flag and a nearby mark
or
between two RC boats each displaying an orange flag.**

ATTACHMENT D – Post Race Penalties and Arbitration

POST-RACE PENALTIES

D1 PENALTIES TAKEN AFTER A RACE

D1.1 After a race, a boat that may have broken a rule of Part 2 or rule 31 while *racing* may take a Post-Race Penalty for that incident. The penalty shall be a Scoring Penalty, calculated as stated in rule 44.3(c). However, rules 44.1(a) and (b) apply. A boat takes a Post-Race Penalty by informing the race committee in writing and identifying the race number and when and where the incident occurred.

D1.2 The Post-Race Penalty shall be

- (a) 20%, if taken before the protest time limit, or
- (b) 30%, if taken after the protest time limit but before the beginning of a hearing involving the incident.

ARBITRATION

(A boat may take the applicable Post-Race Penalty in D1 without participating in an arbitration meeting.)

D2 PROTEST ARBITRATION

D2.1 An arbitration meeting will be held prior to a protest hearing for each incident resulting in a *protest* by a boat involving a rule of Part 2 or rule 31, but only if each *party* is represented by a person who was on board at the time of the incident. No witnesses will be permitted. However, if the arbitrator decides that rule 44.1(b) may apply or that arbitration is not appropriate, the meeting will not be held, and if a meeting is in progress, it will be closed.

D2.2 Based on the evidence given by the representatives, the arbitrator will offer an opinion as to what the protest committee is likely to decide:

- (a) the *protest* is invalid,
- (b) no boat will be penalized for breaking a rule, or
- (c) one or more boats will be penalized for breaking a rule, identifying the boats and the penalties.

D2.3 A boat that may have broken a rule may take a Post-Race Penalty as provided in D1. However, the penalty in rule D1.2(a) is available only until the protest time limit or until the beginning of the arbitration meeting, whichever is earlier. During a meeting, a boat may take a penalty by acknowledging her acceptance of the penalty in writing.

D2.4 If a boat asks to withdraw her *protest*, the arbitrator may act on behalf of the protest committee in accordance with rule 63.1 to accept the withdrawal.