



*Waikiki Yacht Club*  
1599 Ala Moana Blvd  
Honolulu, Hawaii, 96814  
808.995.4405 | [regatta@waikikiyachtclub.com](mailto:regatta@waikikiyachtclub.com)

## **Sailing Instructions**

### **Beach Fleet Championship**

**September 20, 2014**

1. **RULES:**

1.1. The regatta will be governed by the rules as defined in the Racing Rules of Sailing (RRS), the prescriptions of US SAILING, pertinent Class/Fleet Rules, by the Waikiki Yacht Club Standing Sailing Instructions, the Notice of Race and these Sailing Instructions.

1.2. The RRS are changed as follows:

1.2.1. Rule 52 - The use of powered winches is authorized.

1.2.2. Rule 56 does not apply

1.2.3. Rule 55 is changed to allow the use of banding for safety purposes

2. **NOTICES TO COMPETITORS:** Notices to competitors will be posted on the official notice board located in the WYC on the regatta board.

3. **CHANGES TO THE SAILING INSTRUCTIONS:** Any change to the sailing instructions will be posted before 0900 on the day it will take effect, except that any change to the schedule of races will be posted by 2000 on the day before it will take effect.

4. **SIGNALS MADE ASHORE:** Signals made ashore will be displayed from the WYC flagpole

5. **SCHEDULE OF RACING:**

5.1. The first warning will be at 1255 Saturday September 20, 2014. Subsequent starts will be in five minute intervals in the following order: Cruising, X, A / B, Cal 20

5.2. Number of races: There will be three races sailed per class

6. **CLASS FLAGS**

PH X – Pink with X

PH A & B – Black with 1

Cruising – Light Green with C

Cal 20 – Black Flag with #20

7. **RACING AREA:** The attachment shows the location of the racing area

8. **THE COURSES:**

8.1. X, A, B:

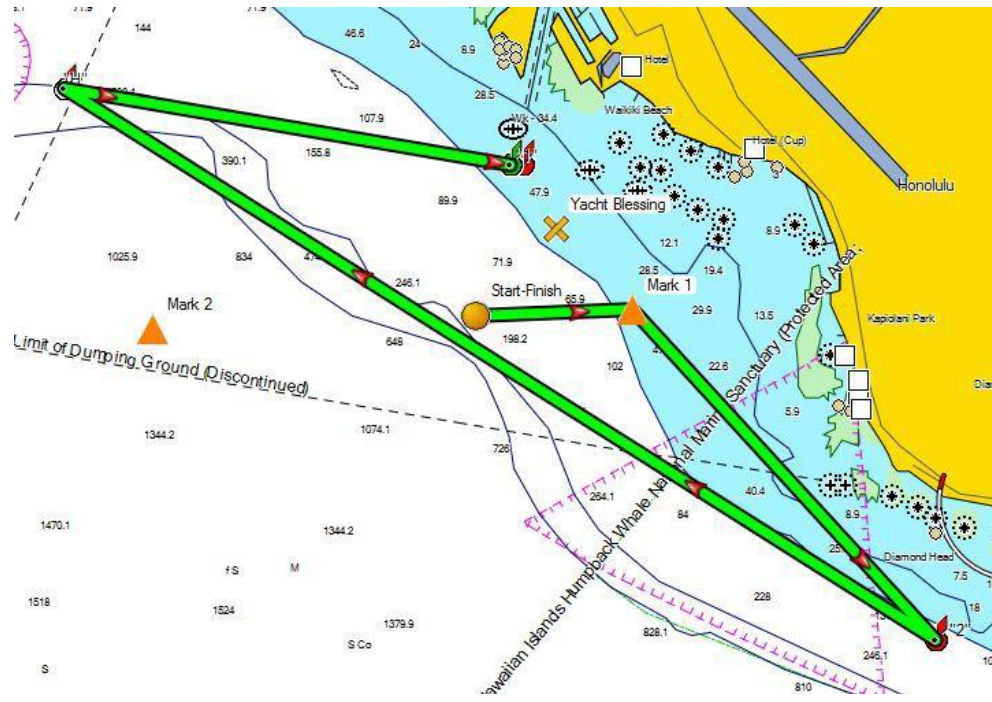
Course 1: Mark 1 to port - Mark 2 to port – Finish (signaled with a #1 pennant)

Course 2: Mark 1 to port - Mark 2 to port - Mark 1 to port - Mark 2 to port – Finish (Signaled with #2 pennant)

8.2. Cruiser Course: Start – Mark1 to Starboard –DH buoy to Port - HH buoy to Starboard – Finish at G1



# Cruising



# Cal 20 Course 1 & 2

