

## Hawaii Yacht Club

1739C Ala Moana Blvd. Honolulu HI 96815

Telephone: (808) 949-4622

Fax: (808) 943-1441

E-mail: hyc-rsail@hawaii.rr.com

# Sailing Instructions Kokohead Race ADDENDUM NO. 1

Sunday, February 16, 2014

Organizing Authority: Hawaii Yacht Club (HYC)

## 11. THE START

- 11.2 The starting line will be between the starting mark on the port end and the staff of an ORANGE flag on the main Race Committee Boat on the starboard end.

## 12. THE FINISH

- 12.1 The finishing line will be between the finishing mark on the port end and the staff of an ORANGE flag on the Main Committee Boat on the starboard end. In the absence of a Main Committee Boat, The finishing line will extend 100' seaward from R2 and a point in the HYC clubhouse with approximate bearing of 017° magnetic (pass R2 to starboard).

## 14. TIME LIMITS

- 14.1 There will be a time limit of 4:00 pm, for each class, to finish the race.

## 18. SAFETY REGULATIONS

- 18.2 Upon withdrawing from the race, yachts shall inform the race committee via VHF Channel 68 by calling the Principal Race Officer, Frank Lange at 561.0034. Failure to do so may result in denied entry to future races.



## Hawaii Yacht Club

1739C Ala Moana Blvd. Honolulu HI 96815

Telephone: (808) 949-4622

Fax: (808) 943-1441

E-mail: [hyc-rcsail@hawaii.rr.com](mailto:hyc-rcsail@hawaii.rr.com)

# Sailing Instructions *Kokohead Race*

Sunday, February 16, 2014

Organizing Authority: Hawaii Yacht Club (HYC)

## 1. RULES

- 1.1. The race will be conducted according to *The Racing Rules of Sailing 2013-2016*, including US Sailing Prescriptions, Hawaii Yacht Racing Association [HYRA] Prescriptions and HYC Standing Rules for Offshore Races unless otherwise amended in the Notice of Race or these Sailing Instructions.
- 1.2. RRS 51 and 52 are modified to allow the use of integrally designed Canting Ballast Twin Foil [CBTF] and water ballast technology.
- 1.3. RRS 52 is modified to allow the use of winches operated by using stored power.
- 1.4. RRS 55 is modified to add the following: "However, material used for banding sails may be discarded while setting sails".

## 2. NOTICES TO COMPETITORS

Notices to competitors will be posted on the official notice board located at Hawaii Yacht Club [HYC] or on the Main Race Committee Boat.

## 3. CHANGES TO THE SAILING INSTRUCTIONS

Any changes to the Sailing Instructions will be posted by 0830 on the day they will take effect.

## 4. SIGNALS MADE ASHORE

Signals made ashore will be displayed at the HYC flagpole.

## 5. SCHEDULE OF STARTS

- 5.1. Dates of Racing: All classes will race on Sunday, February 16, 2014.
- 5.2. Number of Races: One race will be sailed for each class.
- 5.3. The scheduled time of the first warning signal is 1055 hours
- 5.4. The approximate starting times for each class are provided in the table below:

	Aloha	B	A	X
Warning	1055	1105	1115	1125
Start	1100	1110	1120	1130

## 6. CLASS FLAGS

6.1. Class Flags are as follows:

<u>CLASS</u>	<u>FLAG</u>	<u>DETERMINATION</u>
Aloha	Green with "C"	Non-spinnaker
B	Gold with "B"	Spinnaker, PHRF > 111
A	White with "A"	Spinnaker, PHRF 31 - 110
X	Blue with "M"	Spinnaker, PHRF < 30

## 7. RACING AREA

The race will be held on the waters between Waikiki and Kokohead.

## 8. THE COURSES

- 8.1. Attachment A shows the courses in a schematic fashion, but the written descriptions of the course, start, and finish will govern in the case of a discrepancy.
- 8.2. Course 1: Start – pass DH(p) – round M1(p) – pass DH(s) – Finish. Course length is approximately 16.7 nm. Course 1 will be indicated with a "1" flag (white pennant with red circle).
- 8.3. Course 2: Start – pass DH(p) – round M1(p) – round DH(p) – round M1(p) – pass DH(s) – Finish. Course length is approximately 28.7 nm. Course 2 will be indicated "2" flag (blue pennant with white circle).
- 8.4. Legs of the course will not be changed after the preparatory signal. This changes RRS 33.

## 9. MARKS

- 9.1. "DH" is the red Diamond Head buoy.
- 9.2. "M1" is an inflatable orange tetrahedron. The approximate GPS coordinates for M1 will be **21° 16'11" N, 157° 43'25" W or within 200 yards of those GPS coordinates**. If M1 is missing or out of position, the race committee boat may substitute for the mark in accordance with RRS 34.
- 9.3. "R2" is the red Ala Wai Harbor Channel entrance buoy.
- 9.4. The starting and mark will be an orange inflatable buoy and the Main Race Committee Boat. Instruction 11.2 will describe the starting line.
- 9.5. The finishing mark will be R2. Instruction 12.1 will describe the finishing line.
- 9.6. R2 will be used as the starting and finishing mark in the absence of an orange inflatable buoy.

## 10. AREAS THAT ARE OBSTRUCTIONS

The area between and within two of a vessel's hull lengths of the Atlantis Submarine tenders, located offshore Waikiki, is designated as an obstruction. The penalty for entering this area is disqualification from the race.

## **11. THE START**

- 11.1. The starting sequence will conform to RRS 26.
- 11.2. The starting line will be between the starting mark on the port end and the staff of an Red flag on the main Race Committee Boat on the starboard end.
- 11.3. Boats starting later than 10 minutes after the last starting signal will be scored Did Not Start without a hearing. This changes RRS A4 and A5.

## **12. THE FINISH**

- 12.1. The finishing line will be between the finishing mark on the port end and the staff of a blue flag on the Main Race Committee Boat on the starboard end.
- 12.2. Boats shall check in with the Race Committee at the contact information listed in instruction 18.2 shortly after passing **DH** on their final approach to the finishing line.
- 12.3. Boats finishing after 1700 hours shall record their own finish time and report it to the Race Committee as soon as possible.

## **13. PENALTY SYSTEM**

Yachts that take a penalty or retire under RRS 44.1 shall file a written acknowledgement with the race committee prior to the protest time limit.

## **14. TIME LIMITS**

There is no time limit for finishing the races.

## **15. PROTESTS AND REQUESTS FOR REDRESS**

- 15.1. Protest forms are available from the race committee. Protests and requests for redress shall be delivered to the race committee within the appropriate time limit.
- 15.2. The protest time limit is 90 minutes after the last boat in the race has finished.
- 15.3. Notices will be posted within 30 minutes of the protest time limit to inform competitors of the time and location of hearings in which they are parties or named as witnesses.
- 15.4. Notices of protests by the race committee or the protest committee will be posted to inform boats under RRS 61.1(b).
- 15.5. A list of boats that, under instruction 13, have acknowledged taking a penalty or retiring, will be posted before the protest time limit.

## **16. ARBITRATION**

Arbitration will be offered as described in the Standing Sailing Instructions.

## **17. SCORING**

- 17.1. The low point system of Appendix A will apply as modified in the Standing Sailing Instructions.
- 17.2. In the event of a tie, RRS A7 will apply.
- 17.3. The PHRF handicap system will be in effect for all boats. Race handicaps will be calculated using the Time-on-Time method as adopted by HYRA.



## **18. SAFETY REGULATIONS**

- 18.1. **VHF Channel 68** is reserved for essential communications otherwise yachts shall monitor VHF Channel 16.
- 18.2. Upon withdrawing from the race, yachts shall inform the race committee via **VHF Channel 68**, by voice hail, or by calling the principal race officer Craig Wicke at 721-1228. Failure to do so may result in denied entry to future races.

## **19. PRIZES**

For each class, 1<sup>st</sup> prize will be awarded if three or more boats enter, 2<sup>nd</sup> prize will be awarded if five or more boats enter, and 3<sup>rd</sup> prize will be awarded if seven or more boats enter.

## **20. DISCLAIMER OF LIABILITY**

Competitors participate in the regatta entirely at their own risk. See RRS 4, Decision to Race. The organizing authority will not accept any liability for material damage or personal injury or death sustained in conjunction with or prior to, during, or after the race.

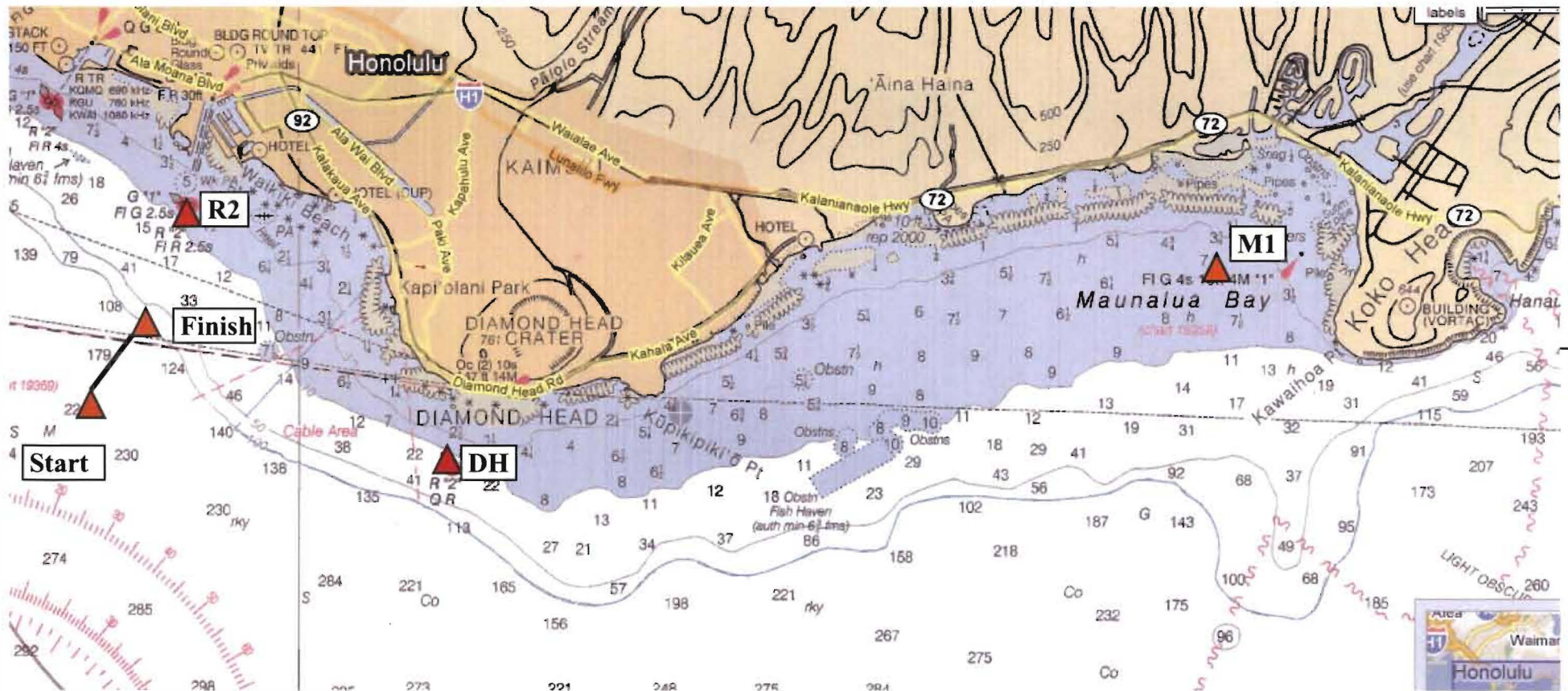
## **21. INSURANCE**

Each participating boat shall be insured with valid third-party liability insurance with a minimum cover of \$300,000 per event or the equivalent.

# Attachment A

## Temporary Mark Locations

### 2014 Kokohead Race

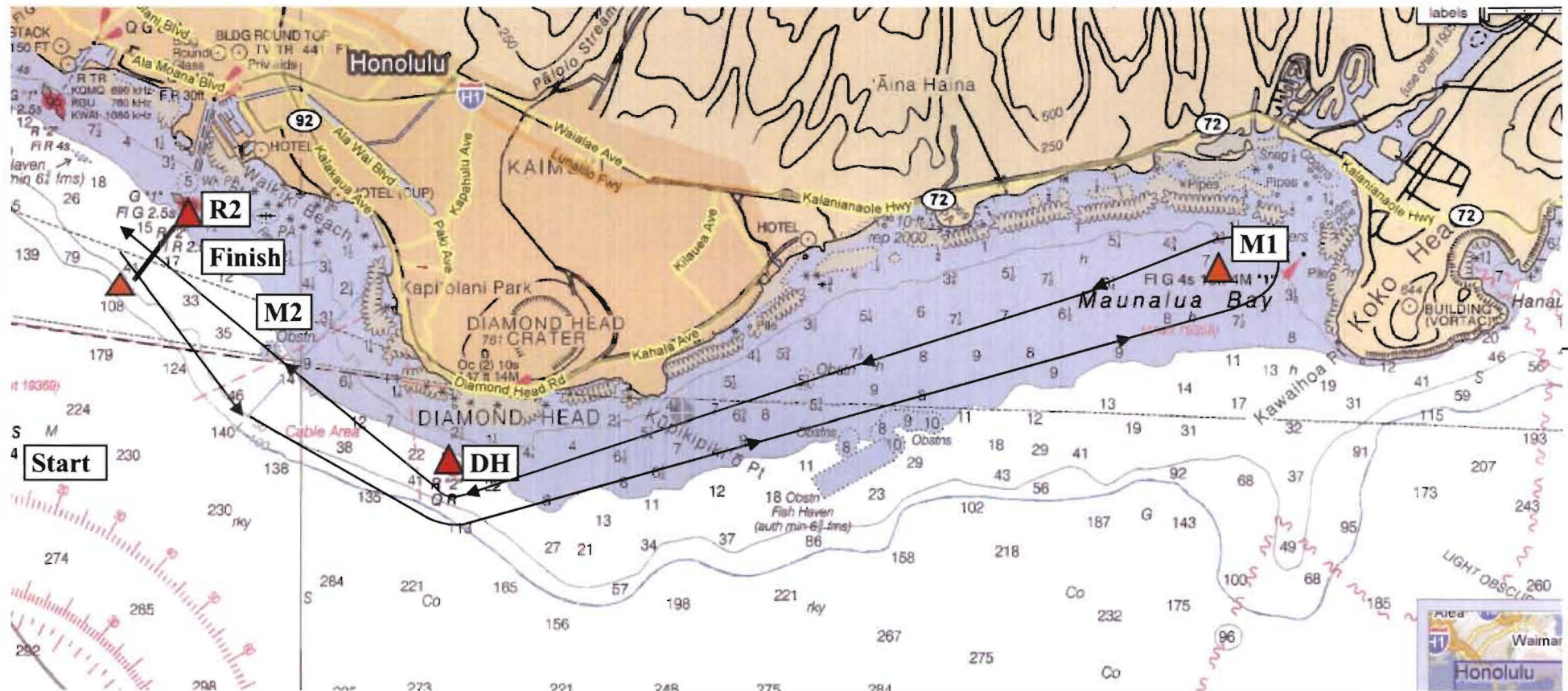




# Attachment A

## Course 1

### 2014 Kokohead Race



# Attachment B

## Course 2

### 2014 Kokohead Race

