

2014 SCYA Midwinter Regatta Amendment 2 20140214

Host ALYC: PHRF > 0, Offshore, Spin and Non-Spin

SAILING INSTRUCTIONS

BASIC PRINCIPLE

Competitors in the sport of sailing are governed by a body of *rules* that they are expected to follow and enforce. A fundamental principle of sportsmanship is that when competitors break a *rule* they will promptly take a penalty which may be to retire.

1. RULES

1.1. The Regatta will be governed by the 'rules' as defined by the 2013-2016 Racing Rules of Sailing (RRS) including US Sailing Prescriptions, and the Class Rules of the Performance Handicap Racing Fleet (PHRF) of Southern California.

1.2. "Marine Industry Racer (MIR) Rule" as stated in Section 8 of the PHRF of Southern California (SoCal PHRF) Class Rules will not apply.

2. ENTRIES

2.1. An entry form must be filed with the American Legion Yacht Club or by web-entry at Regatta Networks. The individual signing the entry or web-entering will be regarded as responsible for the boat throughout the event.

2.2. An entrant must be a member of a yacht club recognized by US SAILING or, in the case of a foreign club, by its national authority.

2.3. Entries must include the sail number and class (spinnaker or non-spinnaker) for each entry to be accepted.

2.4. The Race Committee may group the boats into separate starting classes based on PHRF rating. Class breaks will be posted on the Official Notice Board at the ALYC Hut porch no later than 10am, and be announced at the Skipper's Meeting, scheduled for 8:30am Saturday 2/15/14 in the ALYC clubhouse Hut.

3. PENALTIES

3.1. RRS 44.2 is changed to a One Turn Penalty.

4. CHANGES TO SAILING INSTRUCTIONS AND SIGNALS MADE ASHORE

4.1 Signals made ashore will be displayed on the flag pole at the American Legion marina ramp.

4.2 When the AP flag is displayed ashore, the warning signal will be made not less than one hour after the AP flag is lowered.

4.3 Flag L flown ashore indicates a change has been made to the Sailing Instructions. A numeral pennant will fly with the L flag if more than one change has occurred for that day.

4.4 Race Committee may also issue verbal changes to the sailing instructions during check-in while code flag LIMA (Come Within Hail) is displayed.

4.5 Any change to the schedule of races will be posted by 1900 hours on the day before the race.

5. COURSES AND MARKS

5.1. The Racing Area will be the coastal waters off of Newport Beach, CA and Huntington Beach, CA. Courses will be

Windward-Leeward on Saturday February 15th, 2014 (as shown in **Appendix A**) and
Random-Leg on Sunday February 16th, 2014 (as shown in **Appendix B**).

5.2 The anchored marks are orange, yellow or red tetrahedrons. An Oil Island or government Nav Aid may be used as a mark of the course.

5.3 Any alternate or changed marks will be orange, yellow or red tetrahedrons with a black band.

5.4. All marks will be left to port unless otherwise indicated.

5.5 All marks are rounding Marks except: specified gate Marks, any Marks forming the Start or Finish line and Marks shown in brackets (e.g. [K]) on the course list or chart.

5.6 The course will be designated by number signal pennants flown from a staff on the Race Committee Signal Boat as depicted in the Appendices.

6. CHECK-IN

6.1. Prior to the first Warning Signal for the first race, each boat shall:

- a) sail past the Race Committee boat on starboard tack;
- b) announce her sail number; and
- c) obtain the recognition of her sail number by the Race Committee.

6.2. The Race Committee may penalize a boat for failure to check in.

6.3 NO late entries will be accepted at the RC boat on the water, unless a boat has been sent to our race by another R/C.

7. START/FINISH, RETIRING CLASSES and CLASS FLAGS

7.1. The first warning signal each day is scheduled for 1155 hours.

7.2. The Start and Finish lines will be a line between an orange flag on a Race Committee Boat and an orange flag on a staff located as described in Appendices A for Saturday and B for Sunday.

7.3. Races will be started using RSS standard 5 minute rolling starts with an attention signal approximately one (1) minute before the 1st class' Warning signal.

7.4 The Competitors are shown in Appendix C. Classes, unless modified as per 2.4, will be:

- A. SPIN PHRF under 55** indicated by a white flag with the large black letter: "A"
- B. SPIN PHRF over 55** indicated by a white flag with the large black letter: "B"
- C. Non-SPIN PHRF all** indicated by a white flag with the large black letter: "C"

7.5. Upon elimination of a class, the starting times of succeeding classes will advance accordingly. Competitors must be alert for the display of their class flag at the warning signal for each race.

7.6. Boats whose Warning Signal have not been made shall keep clear of the starting area and of boats starting and finishing. When not racing, a boat interfering with any boat that is racing is subject to protest.

7.7 No spinnakers or loose luff headsails may be hoisted more than 3 feet above the deck centerline prior to Starting.

7.8 Individual recalls will be signaled in accordance with RRS 29.1. The Race Committee may hail On Course Side (OCS) sail numbers on Channel 68. Neither the occurrence of this hail, timing of this hail, equipment failure or failure of a boat to hear the hail shall be cause for redress. This changes RRS Rule 62.1(a).

7.9 Boats retiring from the race shall notify the race committee prior to leaving the race area on VHF Channel 68.

8. TIME LIMIT

8.1. Boats failing to finish within forty (40) minutes after the first boat in their class finishes will be scored "DNF" without a hearing. This modifies RRS 35.

8.2 The time limit for the last race on Saturday for all Classes will be 1700. Boats that have not finished by this time limit will be scored "DNF" without a hearing. This modifies RRS 35.

8.3 The time limit for the last race on Sunday for all Classes will be 1600. Boats that have not finished by this time limit will be scored "DNF" without a hearing. This modifies RRS 35.

9. PROTESTS

9.1. RRS 61.1 is changed by adding this sentence: "When a boat intends to protest, she shall notify the Race Committee at the finishing line and inform the Race Committee of the identity of the other boat involved in the incident."

9.2. Protests shall be written on forms available at the prize-giving presentation area of ALYC and completed forms shall be delivered to the prize-giving presentation area table no later than sixty (60) minutes after the Race Committee Boat has returned to the dock.

9.3. Protests will be heard, in the order determined by the Protest Committee.

9.4. Only the helmsman at the time of the incident or the responsible individual the registered the boat for the race (see 2.1) may represent the boat in a hearing. No other party may represent a boat or file a protest on her behalf. This changes RRS 63.

9.5. It is the sole responsibility of each boat involved to be ready and have witnesses available when the hearing is called.

9.6. Protest hearings will be conducted as "Time-Limited Protest Hearings", at a time determined by the Race Committee, with the following format: Each party will be allowed three (3) minutes to present its own version of the incident. Each party will then be allowed two (2) minutes to question other parties. Providing no party has suffered serious damage, following testimony and questions, any party may accept a 20% scoring penalty, calculated in accordance with RRS 44.3(c). If a party accepts a scoring penalty, then the relevant protest shall be dismissed and the party may not be penalized further in that hearing (except for an infringement of RRS 2). If the protest is not resolved, then the parties may call witnesses. Witnesses shall have two (2) minutes to present relevant and non-redundant testimony. Each party then will be allowed two (2) minutes to question each witness. Each party will then be allowed one (1) minute to summarize its position. The Protest Committee will then reach its decision.

10. SCORING

10.1 The Low Point Scoring System of RRS will apply.

10.2. Three (3) races may be held on Saturday. Three (3) races may be held on Sunday.

10.3. If six (6) races are run, one (1) race will be excluded from the total of the scoring.

10.4. Three races shall constitute a series.

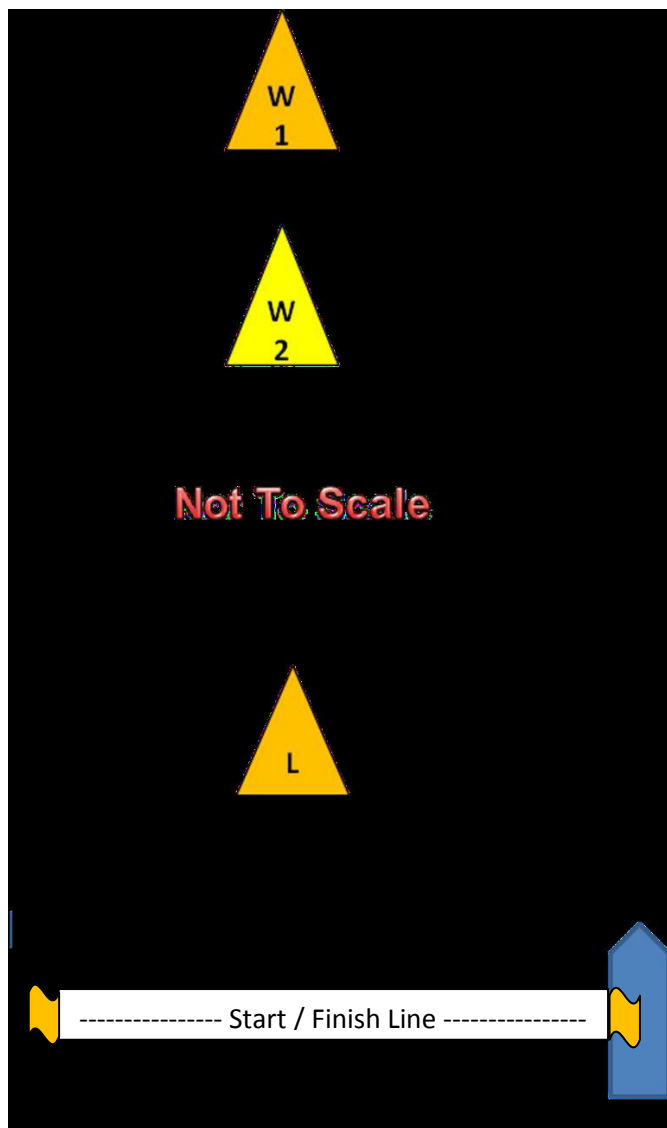
11. AWARDS/PRIZE-GIVING

11.1 A prize-giving presentation for all Classes, without pending Protests, will begin at ALYC at 1800 or sixty (60) minutes after the Race Committee Signal Boat docks at ALYC, whichever occurs last.

12. DISCLAIMER OF LIABILITY

12.1 Competitors participate in the regatta entirely at their own risk. See RRS Rule 4, Decision to Race. The organizing authority or American Legion Yacht Club will not accept any liability for the material damage or personal injury or death sustained in conjunction with the regatta.

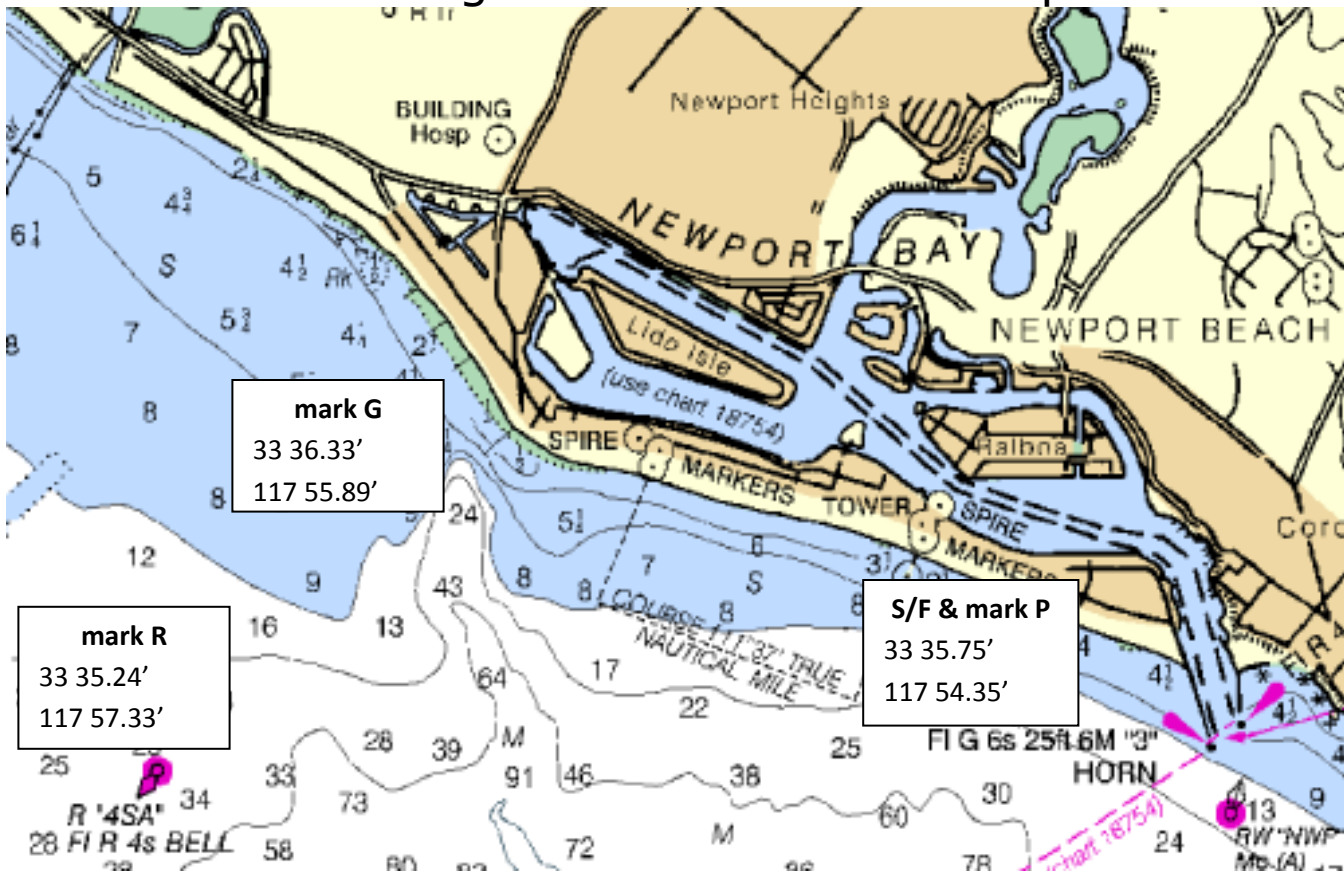
APPENDIX A Saturday February 15th, 2014 Windward Leeward Course Chart & Descriptions



<u>Distance</u>	<u>Pennant</u>	<u>Course #</u>	<u>Windward Leeward Course Mark Order</u>
4 NM		1	Start - W1 - Finish
8 NM		2	Start - W1 - L - W1 - Finish
12 NM		3	Start - W1 - L - W1 - L - W1 - Finish
2 NM		4	Start - W2 - Finish
4 NM		5	Start - W2 - L - W2 - Finish
6 NM		6	Start - W2 - L - W2 - L - W2 - Finish







Position of mark L may be adjusted from the depiction in the diagram including being leeward of the S/F line. S/F is approximately 0.02 nm from the **Newport Beach pier**.

APPENDIX B Sunday February 16th, 2014 Random Leg Course Chart & Descriptions



The following RANDOM LEG courses shall be indicated before the Class Warning Signal (5 minutes before the start) by Signal Flag Numeral Pennants flown on the RC Signal boat and described as follows:

DISTANCE OF NUMBERED COURSES AND THEIR MARK ROUNDING ORDER

5.7NM	1		G	R	S/F		
6.2NM	2		G	R	G(s)	S/F	
8.5NM	3		G	R	P	G	S/F
11.4NM	4		G	R	P	G	R S/F
5.7NM	5		R(s)	G(s)	S/F		
11.4NM	6		R(s)	G(s)	P(s)	R(s)	G(s) S/F

Mark G is an inflatable tetrahedron

Mark P is an orange flag on a floating staff at the port end of the Start Line

Mark R is an inflatable tetrahedron where the 4SA Bell Buoy (Nav Aid) was charted

Round all marks to PORT except those designated by (s) - take to starboard

Be alert to your starting class flag – different starts may have different courses

APPENDIX C Saturday February 15th, 2014 Competitors, Ratings and Class Breaks

A PHRF under 55

	Skipper	Club	Sail#	Boat Name	Fleet / Division	Make/Model	Rating
1.	Roy Jones Scott Poe	Balboa YC	7192	Tango	A PHRF under 55 /	J/Boats / J-133	18
2.	Richley Family	LIYC	77077	AMANTE	A PHRF under 55 /	Choate / 48	36
3.	Jeff Burch	BCYC,LIYC,ALYC	51001	HOT TICKET	A PHRF under 55 /	Schumacher 33 / Schumacher	45
4.	Ralph Rodheim Janet Moustafa BOB KING	BYC	46859	Baraka	A PHRF under 55 /	J Boats / J-120	48
5.	Peter Bretschger	BYC	46638	ADIOS	A PHRF under 55 /	J/Boats / J-120	48

B PHRF over 55

	Skipper	Club	Sail#	Boat Name	Fleet / Division	Make/Model	Rating
1.	John Shulze	BYC	7052	Linstar	B PHRF over 55 /	J Boats / J-109	63
2.	Brian Dougherty Ken Cooper	LIYC	46590	Legacy	B PHRF over 55 /	J/Boats / J-105	78
3.	Mark Wyland	ALYC	621	Lucky Star	B PHRF over 55 /	J / Boats / J/105	90
4.	Tony/Suzanne Delfino/Schuler	NHYC	57975	Violetta	B PHRF over 55 /	Davidson / custom	96
5.	Joe Degenhardt	BCYC	67715	Lickity Split	B PHRF over 55 /	Catalina / Catalina 38	114
6.	John Szalay	BCYC	67507	Pussycat	B PHRF over 55 /	Peterson / 34	120
7.	Skipper-Tim Bercovitz	ALYC	87965	FAIRWIND	B PHRF over 55 /	Far East Yards Mariner / 40' All Wood Ketch	234

C Non-Spin

	Skipper	Club	Sail#	Boat Name	Fleet / Division	Make/Model	Rating
1.	David Rainville Bob Wine Jon Reynolds Greg RAINVILLE	ALYC / BYC	56012	RAG JAG	C Non-Spin /	Hunter / 376	158
2.	Dave Garrett Malcolm Read	ALYC, OSC	56869	Oasis IV	C Non-Spin /	Hunter / HUN326	162
3.	Paul Bjorkholm Stan Espenship	OSC	56720	Oasis V	C Non-Spin /	Catalina / CAT34-II	167