



## Sailing Instructions

May 17 & 18, 2014

Hosted by Lakewood Yacht Club  
Organizing Authority:



1 of 12

LITTLE YACHT SALES \* WEST MARINE \* SEABROOK \* VOLVO PENTA  
HAYS INSURANCE \* SEA LAKE YACHTS \* OJ'S MARINE \* BANKS SAILS

# Shoe Regatta

## Sailing Instructions

### 1. RULES

- 1.1 The Race will be governed by the rules as defined by The Racing Rules of Sailing (RRS 2013 - 2016).
- 1.2 The penalty for violating RRS 31 by touching an anchored Race Committee Boat shall be to retire, and no exoneration is available. This modifies RRS 44.1 and 64.1(c).
- 1.3 The penalty for violating a rule of Part 2 with the result that another boat touches an anchored Race Committee Boat shall be for the offending boat to retire.
- 1.4 For purposes of Sailing Instructions 1.2 and 1.3, touching a float and its line trailing from an anchored Race Committee Signal Boat will not be treated as touching an anchored Race Committee Boat, but will be treated as touching a mark in violation of RRS 31 and penalties and exoneration will be controlled by RRS 44.1 and 64.1(c).

### 2. NOTICES TO COMPETITORS

- 2.1 Notices to competitors will be posted on the official notice board located in the vicinity of the west end of the pool at Lakewood Yacht Club.

### 3. CHANGES TO SAILING INSTRUCTIONS

- 3.1 Any written change to the sailing instructions will be posted before 0800 hours on the day it will take effect, except that any change to the schedule of races will be posted by 2000 hours on the day before it will take effect.
- 3.2 Oral changes to the sailing instructions may be given on the water by hail on the appropriate VHF channel in accordance with RRS 90.2(c).

### 4. SIGNALS MADE ASHORE

- 4.1 Signals made ashore will be displayed on the yardarm at Lakewood Yacht Club.
- 4.2 When flag AP is displayed ashore, "1 minute" is replaced with "not less than 60 minutes".
- 4.3 Signal flags may be flown either alone or over a LINE flag.

Individual LINES will be designated by the following LINE flags:

- LINE A = Code flag A
- LINE B = Code flag B

If no code flag is displayed, the signal pertains to all LINES.

## 5. SCHEDULE OF RACES

5.1 The Warning Signal for the first start each day will be no earlier than 1000 hours for all lines.

## 6. CLASSES, LINE ASSIGNMENTS AND STARTING SEQUENCES

6.1 Class line assignments and Class flags will be identified and designated in Attachment 2.

## 7. RACING AREA

- 7.1 The general racing area will be between Clear Creek Channel Marker #1, the Houston Ship Channel, Red Bluff and San Leon. (See Attachment 1)
- 7.2 LINE A: The racing area will begin approximately 1 NM North or Northeast of the Clear Creek Channel Marker #1.
- 7.3 LINE B: The start line will be approximately 2.4 NM East Southeast of Clear Creek Channel Marker #1.
- 7.4 A boat shall not enter the Houston Ship Channel. The Houston Ship Channel is designated as an obstruction.

## 8. RADIO COMMUNICATION

- 8.1 The Race Committee will monitor and utilize the following VHF channels to communicate with racers:
- VHF Channel 68 on LINE A
  - VHF Channel 72 on LINE B
- 8.2 Boats not having a VHF radio or one not operational will not use this as grounds for redress.

## 9. CHECK IN

- 9.1 Before the Warning Signal for the race, a boat shall check-in with the Race Committee on the water by sailing past the stern of the anchored Race Committee Boat on starboard tack and hailing the boat's name, or sail number, until acknowledged by the Race Committee. Boats shall not check in via VHF Radio. Failure to check in is not subject to protest by another boat. In the event the Race Committee protests a boat for failure to check in, a scoring penalty of the loss of one finishing position will be assessed by the protest committee.

## 10. COURSES / MARKS / CHANGES

- A. **Line A** - Classes will sail windward/leeward courses. No later than the Warning Signal, the Race Committee will display the distance from the starting line to the windward mark, and will display a number pennant indicating the number of legs to be sailed. An Orange tetrahedron will be used for the windward mark, an Orange buoy will be used for the offset mark, and Yellow tetrahedrons will be used for the leeward gate. The windward and offset marks are to be left to port. If only one leeward mark is in place, it shall be rounded to port. Course changes for the Windward mark will be made in accordance with RRS 33 with an orange windward mark being replaced by a yellow mark, or a yellow mark being replaced with an orange mark. To change a leeward gate or mark, the original mark(s) will be moved to a new position. If a class flag is displayed with a C flag or an S flag, the visual signal applies only to that class.
- B. **Line B – WINDWARD/LEEWARD** Classes will sail windward/leeward courses. No later than the Warning Signal, the Race Committee will display the distance from the starting line to the windward mark, and will display a number pennant indicating the number of legs to be sailed. Orange tetrahedrons will be used for original windward and leeward marks. The windward and off- set marks are to be left to port. Course changes for the Windward mark will be made in accordance with RRS 33 with an orange windward mark being replaced by a yellow mark, or a yellow mark being replaced with an orange mark. To change the leeward mark, the original mark will be moved to a new position. If a class flag is displayed with a C flag or an S flag, the visual signal applies only to that class.
- C. **Line B - DISTANCE** Classes will sail a course selected from the “Distance Courses” listed in Attachment 1. No later than the warning Signal, the Race Committee will display, through the use of a numeric pennant, the course to be sailed. If a class flag is displayed with an S flag (“Shorten Course”), the visual signal applies only to that class.

## 11. THE START

- 11.1 The starting line for **Windward/Leeward classes** will be between a staff displaying an orange flag on the Race Committee Signal Boat at the starboard end and a Orange tetrahedron or ball at the port end.
- 11.2 The starting line for **Distance classes** will be between a staff displaying an orange flag on the Race Committee Signal Boat at the starboard end and a Yellow tetrahedron at the port end.
- 11.3 Boats who's Warning Signal has not been made shall stay clear of the starting area once the Race Committee has commenced a starting sequence.
- 11.4 A boat shall not start more than 10 minutes after her start signal. Boats starting late shall *keep clear* of boats whose warning signal has been made.
- 11.5 The races will be started in accordance with RRS 26.

<i>Warning</i>	<i>Class flag up</i>	<i>Sound</i>	<i>5 minutes before start</i>
<i>Preparatory</i>	<i>Preparatory flag up</i>	<i>Sound</i>	<i>4 minutes before start</i>
<i>One Minute</i>	<i>Preparatory flag down</i>	<i>Long sound</i>	<i>1 minute before start</i>
<i>Starting</i>	<i>Class flag down</i>	<i>Sound</i>	<i>0 minutes before start</i>

- 11.6 As a courtesy only, the Race Committee will attempt to announce on the VHF radio any boat that is OCS; however, any such hail or any failure by the Race Committee to make such hail or the sequence in which boats are hailed shall not be grounds for redress.

## 12. SHORTENING COURSE

- 12.1 In the event the Race Committee decides to shorten the course for some, but not all classes, the Race Committee will display the class flag for the class, or classes, whose course is being shortened along with the "S" flag as required by RRS 32.2.

## 13. RETIRING

- 13.1 Boats retiring from the race shall notify the Race Committee at their earliest opportunity. Failure to do so may result in a boat being disqualified from the event and excluded from future LYC regattas. Retiring boats should first attempt to notify the Race Committee via the assigned VHF Channel. If not possible, call the LYC office at 281-474-2511.

## 14. PENALTY SYSTEM

- 14.1 Section A of US Sailing Prescription to the RRS Appendix T will apply. It provides for the following penalties while racing: The first two sentences of rule 44.1 are changed to: "A boat may take a One-Turn Penalty when she may have broken a rule of Part 2 or rule 31 while *racing*. However, when she may have broken a rule of Part 2 while in the *zone* around a *mark* other than a starting *mark*, her penalty shall be a Two-Turns Penalty.
- 14.2 We will use the post race penalty system described in Section B of Appendix T, which allows for acceptance of percentage penalties prior to formal hearings.
- 14.3 A boat which takes a one-Turn or Two-Turns Penalty shall report doing so to the Race Committee as soon as possible after finishing. She shall report location and time of the incident and other boats involved.

## 15. THE FINISH

- 15.1 **Windward/Leeward classes:** Except in the event of a shortened course, the finishing line for all classes will be between a staff displaying a blue flag on the Race Committee Signal Boat and an orange ball or tetrahedron. The Race Committee Signal Boat shall be left to starboard. If a course with upwind finish has been selected, the finishing line will be approximately 100 yards upwind of the windward mark, between an orange ball or tetrahedron and a staff displaying a blue flag on a Race Committee boat. The Committee boat shall be left to starboard.
- 15.2 **Distance classes:** Except in the event of a shortened course, the finishing line for all classes will be between a staff displaying a blue flag on the Race Committee Signal Boat and a Yellow tetrahedron.

## **16. TIME LIMIT AND FINISHING WINDOW**

- 16.1 For Windward/Leeward Courses any race in which no boat rounds the first windward mark within 45 minutes after its class start, or finishes within 2 hours of the start, will be abandoned. After the first boat in a One Design class finishes, any boat finishing more than thirty (30) minutes after that boat will be scored DNF. This changes RRS 35, A4.1, and A4.2.
- 16.2 For Distance Courses any race in which no boat rounds the first mark within 2 hours after its class start, or finishes within 4 hours of the start, will be abandoned. Any boat that has not finished within one hour of the first boat in her class will be scored DNF. This modifies RRS 35, A4.1, and A4.2.

## **17. PROTESTS AND REQUESTS FOR REDRESS**

- 17.1 The protest and redress procedures for this regatta will comply with the basic elements of new RRS Appendix T.
- 17.2 A boat intending to protest another boat shall notify the Race Committee at the first reasonable opportunity after finishing and, when applicable identify the Protestee.
- 17.3 Protest forms are available in the LYC Clubhouse Office. Protests shall be delivered there within the protest time limit. Protestors and Protestees are requested to promptly go to the LYC Club House and either wait for resolution or leave a contact phone number.
- 17.4 For each LINE, the protest time limit is sixty-minutes (60) after the Race Committee Signal Boat returns to the Lakewood Inner Harbor. This time will be designated by one long blast of the horn and will be posted on the official notice board. In the event the Race Committee Signal Boat does not return to the harbor, the protest time limit will begin one hour after notice of that fact is posted on the official notice board.
- 17.5 Notices of scheduled hearing times and locations will be posted within thirty (30) minutes of the expiration of the protest time limit.
- 17.6 Notice of a protest by the Race Committee will be posted on the official notice board.
- 17.7 Section C of US Sailing Prescription Appendix T shall apply to protest hearings. This section describes expedited procedures for protests. Hearings may commence as soon as all parties are present.
- 17.8 Protest hearings for the 2014 Shoe Regatta may be held in the Commodores Room, located up the stairs from the clubhouse foyer. Parties should encourage witnesses to remain in close proximity and immediately reachable via mobile phone to further the expedited hearing process.
- 17.9 US Sailing Prescriptions relating to redress hearings shall not apply to this regatta.

## **18. SCORING**

- 18.1 The Low Point Scoring System of Appendix A will apply. Each boat's total score shall be the

sum of her scores for all races. No score will be excluded. This modifies Appendix A2.

18.2 One race needs to be completed to constitute a regatta.

18.3 Boats in the PHRF and Cruising Classes will be scored using time-on-distance (TOD) scoring.

## **19. PRIZES**

19.1 Trophies will be awarded for first and second place for classes with 4 or 5 boats and for first, second and third place for classes with more than 5 boats. Additional trophies may be awarded at the discretion of the Race Committee.

19.2 The name of the winner of the most competitive class – as determined by the Race Committee - will be added to the Shoe Regatta Challenge Cup Wheel perpetual trophy. Only spinnaker classes sailing windward/ leeward courses will be eligible.

## **20. INSURANCE**

20.1 Each participating boat shall be insured with valid third-party liability insurance with minimum coverage of \$300,000 per event or the equivalent.

## **21. DISCLAIMER OF LIABILITY**

21.1 Competitors participate in the regatta entirely at their own risk. See RRS 4, Decision to Race. The organizing authority will not accept any liability for material damage or personal injury or death sustained in conjunction with or prior to, during, or after the regatta.

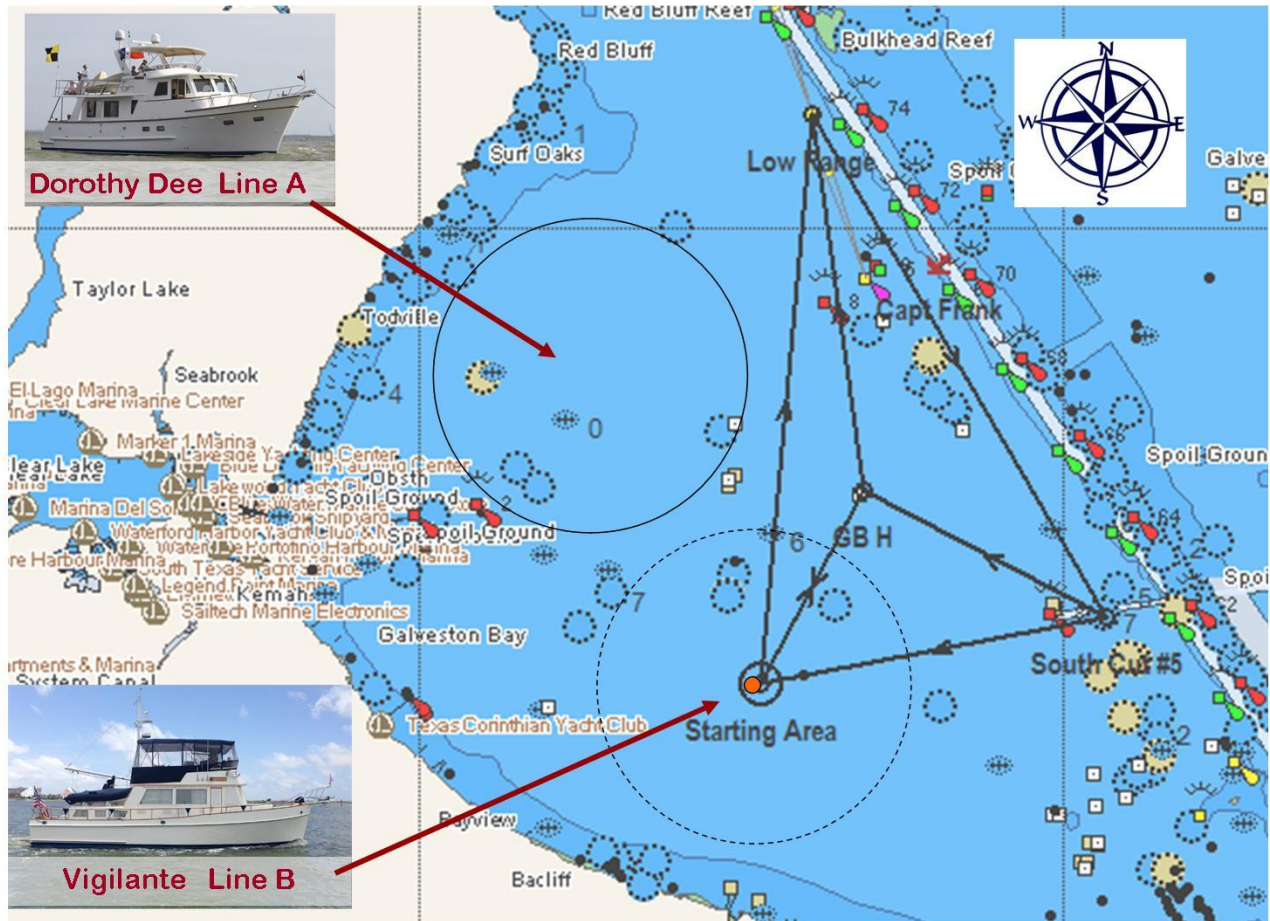
## **22. ATTACHMENTS**

22.1 Attachment 1 - Distance Courses and Racing Areas

22.2 Attachment 2 - Classes, Line Assignments, and Starting Sequences

# Attachment 1

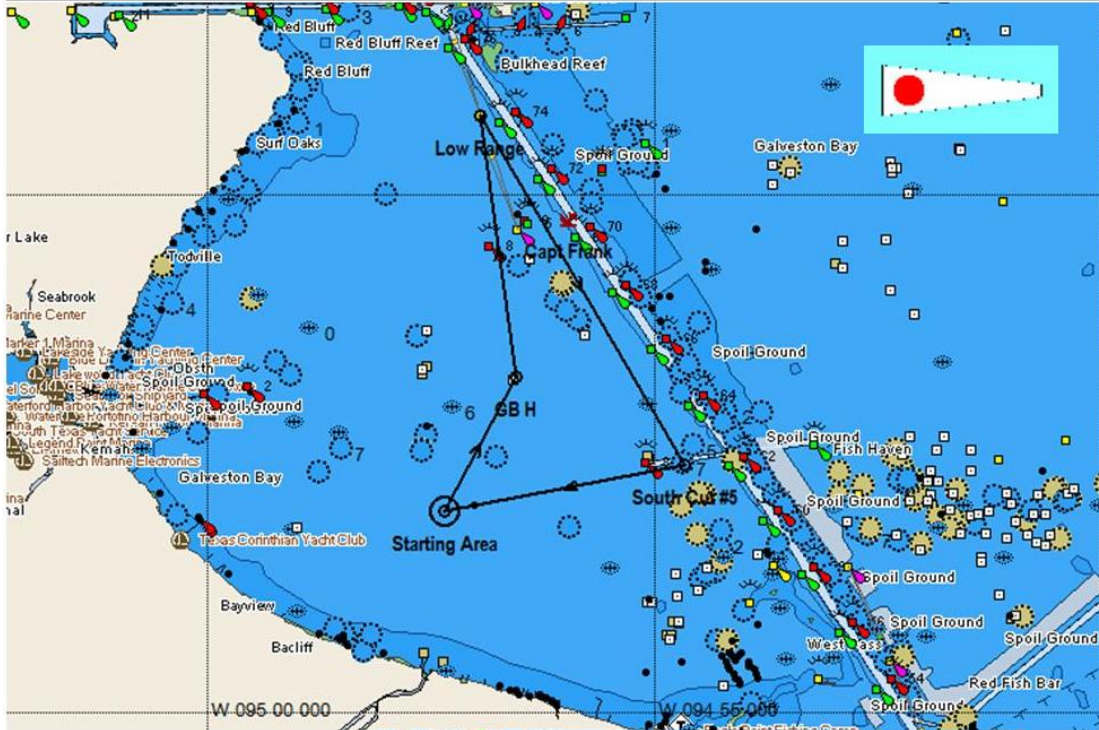
## Racing Areas and Distance Courses





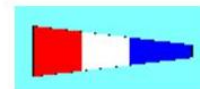
Course 1

Name	Description	Lat	Lon	BRG	Dst (Nm)	Dst tot (Nm)
Starting Area	Approx Start Area	29°31.967 N	094°57.340 W			
GB H	GB H to Port	29°33.260 N	094°56.540 W	28°	1.47	1.47
Low Range	Low Range to Stbd	29°35.780 N	094°56.940 W	352°	2.54	4.01
South Cut #5	South Cut #5 to Stbd	29°32.410 N	094°54.655 W	149°	3.91	7.92
Finish	Approx Start Area	29°31.967 N	094°57.340 W	259°	2.38	10.3



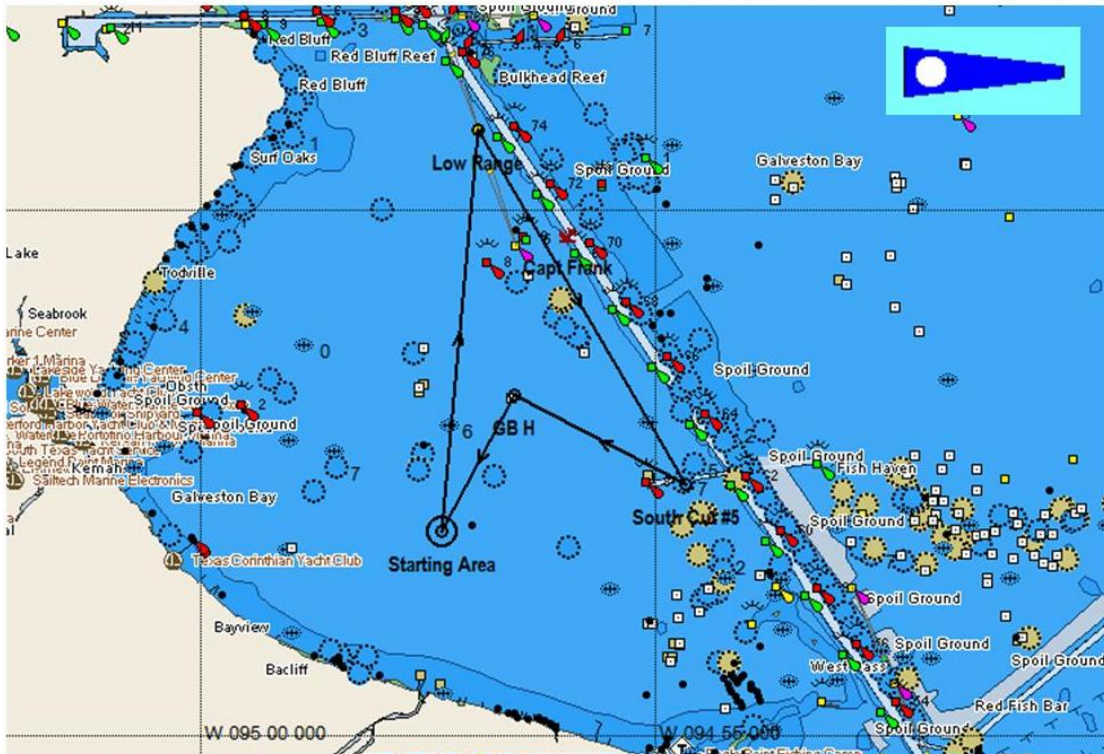
Course 3 (reverse of Course 1)

Name	Description	Lat	Lon	BRG	Dst (Nm)	Dst tot (Nm)
Starting Area	Approx Start Area	29°31.967 N	094°57.340 W			
South Cut #5	South Cut #5 to Port	29°32.410 N	094°54.655 W	79°	2.38	2.38
Low Range	Low Range to Port	29°35.780 N	094°56.940 W	329°	3.91	6.29
GB H	GB H to Stbd	29°33.260 N	094°56.540 W	172°	2.54	8.83
Finish	Approx Start Area	29°31.967 N	094°57.340 W	208°	1.47	10.3



Course 2

Name	Description	Lat	Lon	BRG	Dst (Nm)	Dst tot (Nm)
Starting Area	Approx Start Area	29°31.967 N	094°57.340 W			
Low Range	Low Range to Stbd	29°35.780 N	094°56.940 W	5°	3.83	3.83
South Cut #5	South Cut #5 to Stbd	29°32.410 N	094°54.655 W	149°	3.91	7.74
GB H	GB H to Port	29°33.260 N	094°56.540 W	297°	1.85	9.59
Finish	Approx Start Area	29°31.967 N	094°57.340 W	208°	1.47	11.06



Course 4 (reverse of Course 2)

Name	Description	Lat	Lon	BRG	Dst (Nm)	Dst tot (Nm)
Starting Area	Approx Start Area	29°31.967 N	094°57.340 W			
GB H	GB H to Stbd	29°33.260 N	094°56.540 W	28°	1.47	1.47
South Cut #5	South Cut #5 to Port	29°32.410 N	094°54.655 W	117°	1.85	3.32
Low Range	Low Range to Port	29°35.780 N	094°56.940 W	329°	3.91	7.23
Finish	Approx Start Area	29°31.967 N	094°57.340 W	185°	3.83	11.06



# Attachment 2

## LINE ASSIGNMENTS, CLASS FLAG and STARTING SEQUENCE FOR THE FIRST RACE OF THE REGATTA

The starting order may change for subsequent races

### LINE A – Windward/Leeward

#### CLASSES

Melges 24

J/70

J/22

#### FLAG

Purple

J/70 Class Flag (White and Green)

J/22 Class Flag (Yellow and Blue)

### Line B – Distance & Windward/Leeward

#### DISTANCE CLASSES

PHRF Non-Spin Distance

Beneteau 41

#### FLAG

Light Blue

Pink

#### W/L CLASSES

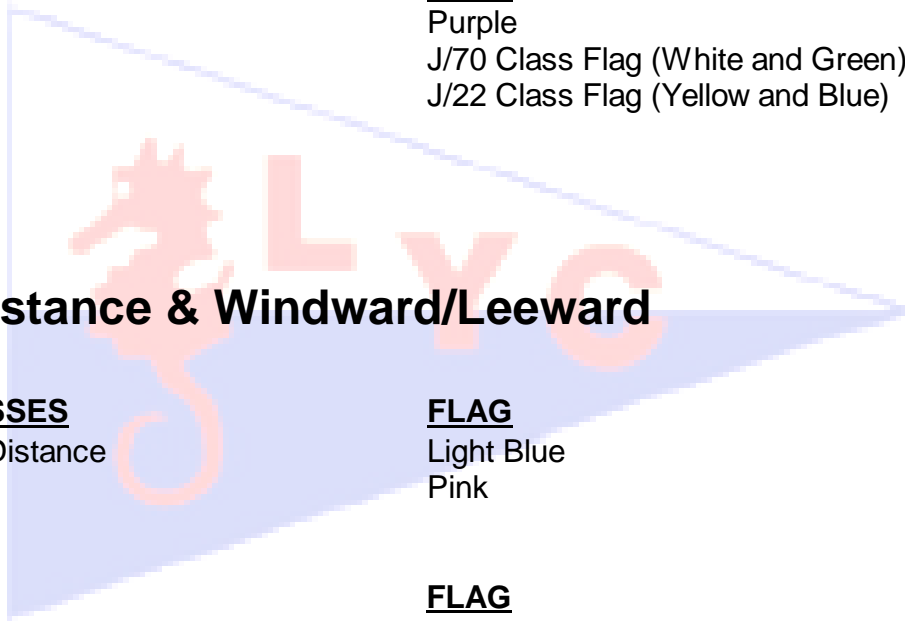
PHRF Spin

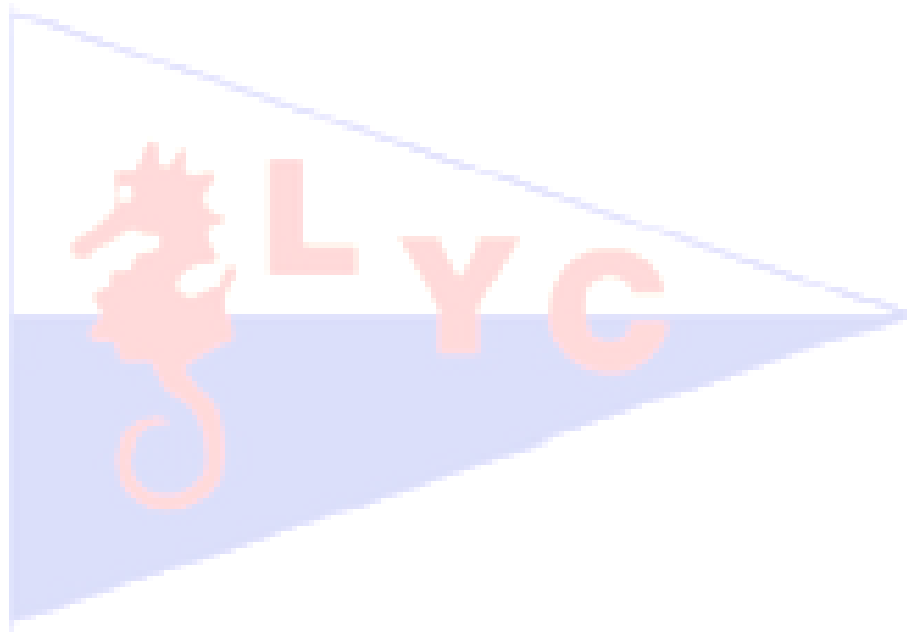
J/105

#### FLAG

Brown

J/105 Class flag (Pink and Blue)





12 of 12

LITTLE YACHT SALES \* WEST MARINE \* SEABROOK \* VOLVO PENTA  
HAYS INSURANCE \* SEA LAKE YACHTS \* OJ'S MARINE \* BANKS SAILS