



THE LAKE NORMAN
HOSPICE REGATTA

14TH ANNUAL LAKE NORMAN HOSPICE REGATTA

SAILING INSTRUCTIONS

Division 3

1. RULES

The Regatta will be governed by the rules as defined by the Racing Rules of Sailing (RRS) 2013-2016.

Eligible boats may be entered by completing registration with the organizing authority.

2. NOTICES TO COMPETITORS

Notices to competitors for Division 3 will be posted on the Official Bulletin Board located in the basement of the LNYC Clubhouse.

3. CHANGES IN SAILING INSTRUCTIONS

Any change to the sailing instructions will be posted no less than one hour before the first Warning Signal on the day it will take effect, except that any change to the schedule of races will be posted by 1900 on the day before it will take effect.

4. SIGNALS MADE ASHORE

4.1 Signals made ashore will be displayed at the flag mast in front of the LNYC Clubhouse.

4.2 Flag "AP" (Answering Pennant - red/white vertical stripes) with two sound signals (one when lowered) means the race is postponed. The Warning Signal will be made not less than 30 minutes after "AP" is lowered.

4.3 When a change to the Sailing Instructions is posted on the Official Bulletin Board, the change will be indicated by flying an "L" flag with a sound. Additional changes will be signaled by adding a numeral pennant ("2" for the second change with a sound, etc).

5. SCHEDULE OF RACES

Two races, one each day, are scheduled for Division 3. Races are scheduled as follows:

| Day & Date | Time | Event |
|--------------|------|----------------------------|
| Sat., May 31 | 1055 | 1 st Warning |
| Sun., June 1 | 0925 | 1 st Warning |
| | 1300 | No warning after this time |

6. CLASS AND COURSE SIGNALS

6.1 A class of three or more boats will constitute a Fleet. Each Fleet shall start in its assigned Division or

as designated at the competitors' meeting and posted on the official bulletin board.

6.2 Warning Signals for the starting sequence of Division 3 will be numeral pennant "3".

6.3 Course signals for Division 3 will be International code flags displayed on the committee boat prior to the Division 3 warning signal. Course flags will be read from top to bottom. All marks shall be left to port. **Figure 1** indicates the letter flag for each mark and its approximate location.

7. MANDATORY CHECK IN

Each boat shall check in by sailing by the Race Committee Signal Boat on starboard tack and hailing its sail number before the first warning signal each day. It shall continue to do so until acknowledged by the Race Committee. Failure to check in may result in not being scored.

8. MARKS

8.1 Marks for Division 3 are white cylindrical buoys with blue bands.

8.2 The starting mark will be a white buoy and staff with an orange flag.

8.3 The finishing mark for Division 3 will be Channel Marker "D7".

8.4 All channel marks shall be passed on the channel side.

9. THE START

9.1 Races will be started using RRS 26.

9.2 The starting line will be between a staff displaying an orange flag on the signal boat at the starboard end and the port end starting mark.

9.3 A boat starting more than 4 minutes after her starting signal will be scored "Did Not Start". This changes Rule A4.1.

10. CHANGES IN COURSE AFTER THE START (refer to RRS 33)

11. THE FINISH

11.1 The finishing line for Division 3 will be between Channel Marker D7 and a staff displaying an orange flag on the nearby race committee boat.

11.2 Each finish boat will display a blue "on station" flag to help distinguish it from other Race Committee boats.

12. TIME LIMIT

12.1 There is no time limit for Division 3.

13. PROTESTS AND REQUESTS FOR REDRESS

13.1 Protests shall be written on forms available at the Race Management Center and delivered there within the Protest Time, which will begin at the time the race committee docks and end 30 minutes later. The race committee will sound one sound signal upon arrival at the dock, signifying the beginning of the protest period.

13.2 The Protest Committee will hear protests in approximately the order of receipt as soon as possible in the Race Management Center.

13.3 Protest notices will be posted on the official bulletin board within 15 minutes of the protest time limit to inform competitors that they are parties to a hearing or named as witnesses. It is each skipper's responsibility to check these notices and report for the hearing as notified.

13.4 On the last day of the Regatta, a request for reopening a hearing shall be delivered: a) within the protest time limit if the party requesting reopening

was informed of the decision on the previous day or, b) no later than 30 minutes after the party requesting reopening was informed of the decision on that day. This changes Rule 66.

14. SCORING

14.1 The Low Point System of Appendix A will apply.

14.2 One race must be completed for each Fleet to constitute a Regatta for that Fleet.

14.3 The total score for each boat will be the sum of her scores for all races. This changes Rule A2.

15. PRIZES

Prizes will be awarded according to the Notice of Race.

16. FUNDAMENTAL RULES AND SAFETY

16.1 Each boat is reminded of RRS Part 1 - Fundamental Rules.

16.2 In the event a boat retires, she shall notify the race committee as soon as possible.

16.3 Each boat shall be equipped with all required safety gear and is subject to inspection by the Race Committee. Failure to have proper equipment could result in disqualification from a race or the Regatta.

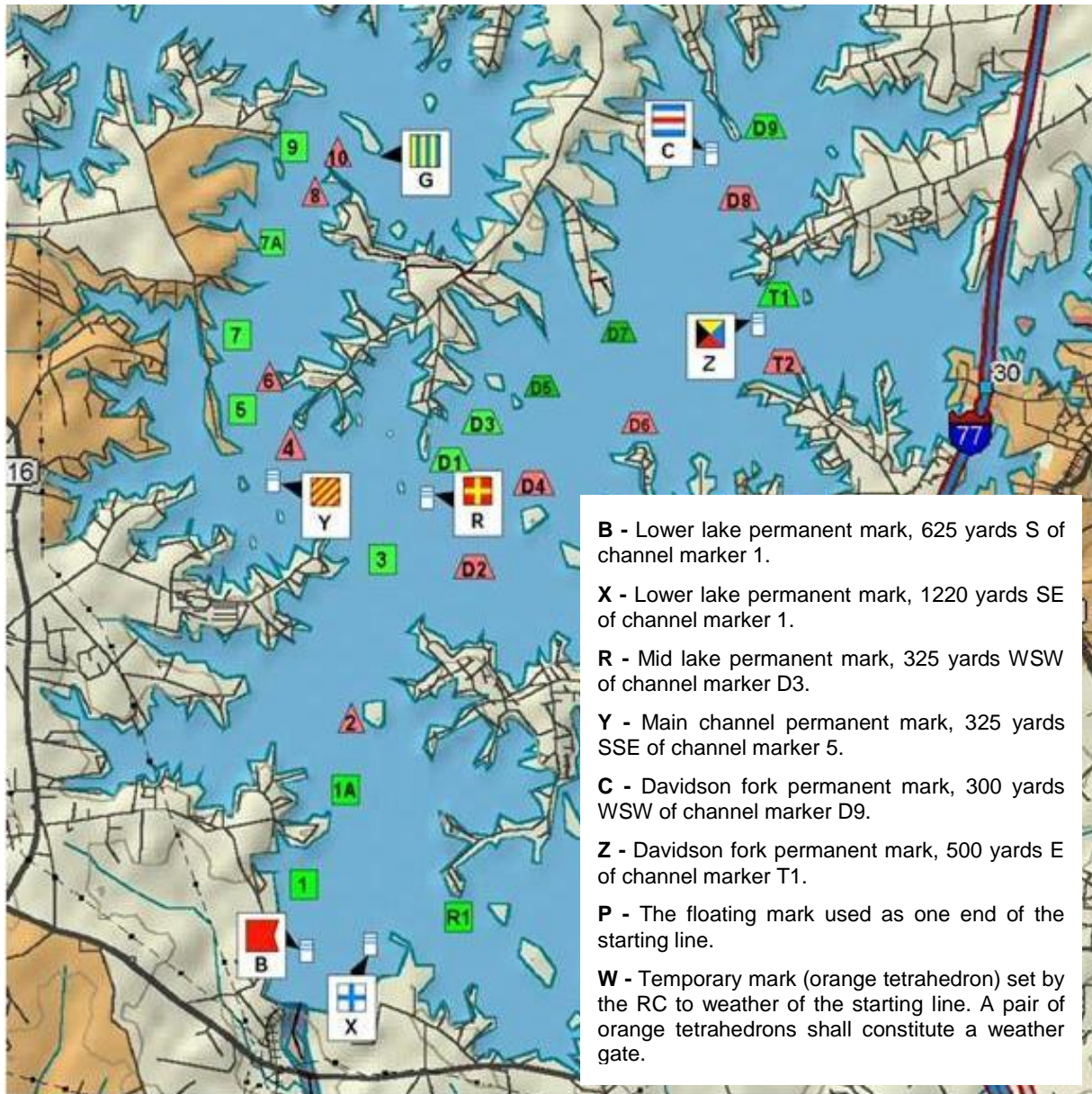


Figure 1 – Division 3 Marks & Approximate Locations