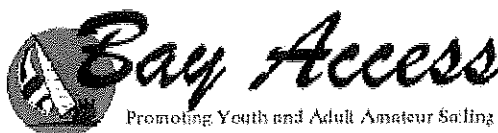


Heald Bank Offshore Race
April 26 and 27, 2014
Presented By: Lakewood Yacht Club
Seabrook, Texas 77586

Organizing Authority:



Sailing Instructions

1. RULES

- 1.1. The Race will be governed by the *rules* as defined by The Racing Rules of Sailing (RRS 2013 – 2016).
- 1.2. Competitors are reminded that, under the preamble of Part 2 of the R.R.S., when a boat sailing under the *rules* meets a vessel that is not, the *rules* require that she comply with the International Regulations for Preventing Collisions at Sea (IRPCAS) or government right-of-way rules. As a result, all racing boats shall obey the Rules of the Road and any applicable Coast Guard standoff zones when encountering vessels not racing or intending to race. This is especially true when encountering commercial traffic; boats failing to do so are subject to protest and disqualification.
- 1.3. All racing boats shall comply with the published Coast Guard standards for safety equipment and night-time lighting requirements
- 1.4. Boats are encouraged to comply with the requirements for a Race Category 3 event as defined by International Sailing Federation (ISAF) Offshore Special Regulations found on the www.sailing.org website.

2. NOTICES TO COMPETITORS

- 2.1. Notices to competitors will be posted on the Official Race Notice Board of Lakewood Yacht Club located in the vicinity of the west end of the swimming pool.

3. CHANGES TO THE SAILING INSTRUCTIONS

- 3.1. Any written change to the sailing instructions will be posted before 0800 hours on the day it will take effect, except that any change to the schedule of races will be posted by 2000 hours on the day before it will take effect.
- 3.2. Oral changes to the sailing instructions may be given on the water by hail on the appropriate VHF channel in accordance with RRS 90.2(c).

4. SIGNALS MADE ASHORE PRIOR TO CLASS STARTS

- 4.1. Signals made ashore may be displayed from the yardarm at the Lakewood Yacht Club.
- 4.2. When flag AP is displayed ashore '1 minute' is replaced with 'not less than five hours'.

- 4.3. When flag AP is displayed over flag A, the race will be postponed to a later day. If displayed in conjunction with one or more class flags, this notice will relate only to this class or these classes. Racers will be notified regarding the new schedule.
- 4.4. Other signals from ashore will be made in Galveston, and they will have their normal meaning as if being made from a race committee signal boat.

5. SCHEDULE OF RACES

- 5.1. The race will begin on Saturday, April 26, 2014.
- 5.2. The warning flag(s) for Spinnaker boats will be no earlier than 1255 hours.
- 5.3. The warning flag(s) for Non-spinnaker boats will be no earlier than 1325 hours.

6. CLASSES

Class assignments and class flags will be identified and designated in Appendix A.

7. COMMUNICATIONS

- 7.1 VHF Channel 72 will be utilized by the Race Committee to communicate with racers, including the starting sequence. Except when communicating with the Race Committee on Channel 72 as provided for in these Sailing Instructions, all boats should monitor VHF Channel 16.
- 7.2 As a courtesy only, the Race Committee will attempt to announce on Channel 72 any boat that is OCS (on course side) at the start; however, any such hail or any failure by the Race Committee to hail any boat OCS will not be grounds for redress.

8. CHECK IN

- 8.1 Before the warning signal for the race, a boat shall check in with the Race Committee on Channel 72.
- 8.2 Spinnaker boats shall check in with the Race Committee on Channel 72 after 1200 on the day the race begins and prior to the warning signal for the Spinnaker class start. Boats in the Non-spinnaker classes shall check in after the Spinnaker class start but before the warning signal for the Non-Spinnaker class.
- 8.3 A boat's failure to check in is not subject to protest by another boat.

9. STARTING LINE

- 9.1 The Starting Line is a line between Galveston Channel Green # 11 and a staff displaying an orange flag on a Race Committee Signal Vehicle ashore.

Boats are cautioned to stay well clear of the shoreline to avoid shoal water!

10. FINISHING LINE

The finishing line will be a line between Galveston Channel Green # 11 and an orange Race Committee Shore Flag located on the southerly shoreline, approximately 1,100 yards distance, and at a bearing of approximately 205 degrees from Galveston Channel Green #11.

11. STARTING

11.1. The races shall be started in compliance with RRS 26.

<i>Signal</i>	<i>Flag And Sound</i>	<i>Minutes Before Starting Signal</i>
Warning	Class Flag up; 1 sound	5
Preparatory	P or Z Flag; 1 sound	4
One-minute	P or Z Flag removed; 1 long sound	1
Starting	Class Flag removed; 1 sound	0

12. COURSES/MARKS

- 12.1. The courses are described in Attachment B. They will be identified by pennants (numbers 1-6) and will be signaled as per RRS 27.1. The number pennant will be displayed ashore, on a staff adjacent to the orange Race Committee Flag. The course selection will also be communicated via VHF Radio Channel 72.
- 12.2. Color photographs of the offshore marks are attached to these sailing instructions (attachment 3).
- 12.3. All boats shall leave the Galveston South Jetty Marker # 5A to starboard after starting.
- 12.4. All boats shall pass between Galveston Entry buoys 5 and 6 before finishing.
Note : **Jetty Marker 5A is not the same as Entry buoy 5.**
- 12.5. The Race Committee has not directly verified the presence of the offshore marks for this race. In the event that any mark of the course is missing, roundings should be made and logged with reference to onboard GPS coordinates.

13. SAFETY CONSIDERATIONS

- 13.1 If a skipper determines that it is necessary to use the boat's motor to maneuver in order to avoid interfering with a ship's safe passage, he may do so. However, when motoring, the boat may not advance position, and may only use the motoring for clearing the ship passage lane. Once cleared, the boat shall immediately cease motoring. This modifies RRS 42. As soon as practical, the skipper shall advise the Race Committee of any action taken in accordance with this rule.
- 13.2.1 A boat retiring from the race shall notify the Race Committee at the earliest opportunity. Retiring boats shall first attempt to notify the Race Committee via Channel 72. That failing, a retiring boat shall attempt to notify a competitor on the course for subsequent relay to the Race Committee. A retiring boat shall also notify the Principal Race Officer, David Comeaux at cell number (832) 236-3292 no later than 1700 hours on Sunday April 27, 2014.

14. PENALTY SYSTEM

- 14.1 A boat acknowledging that she may have broken a rule in Part 2 of "The Racing Rules of Sailing" may take a two-turns penalty in compliance with RRS 44.2 or may take a scoring penalty by complying with the requirements of RRS 44.3.
- 14.2 A boat that takes any penalty under RRS 44.2 shall notify the Race Committee at the first reasonable opportunity after finishing, identifying the location, time, and name of any other boat involved in the incident. Racers are reminded of rule 44.1.b ("if the boat caused injury or serious damage or, despite taking a penalty, gained a significant advantage in the race or series by her breach, her penalty shall be to retire") .

15. FINISHING

- 15.1 Boats shall hail the Race Committee on VHF Channel 72 when passing through Galveston Channel Markers 5 & 6, identifying the boat by name and sail number.
- 15.2 If the Race Committee does not respond to a boat's hail on VHF Channel 72, the Boat shall be prepared to record her own finish time. Finish time shall be marked when Galveston Channel Marker Green #11 is at a bearing of 25 degrees from the vessel's helm. GPS time shall be used.
- 15.3 Boats shall hail the Race Committee again on Channel 72 when preparing to cross the finishing line, identifying the boat by name and sail number. Boats crossing the finish line at night shall display a light on their mainsail number.
- 15.4 If the Race Committee does not acknowledge a boat at or immediately after her finish, the boat shall provide her finish time, and, if possible, the names of the boats finishing before and after her, to the clubhouse office of Lakewood Yacht Club no later than 1900 hours, Sunday, April 27, 2014. The information shall be in writing and may be faxed to (281) 474-3502. The alternate means of communication is to contact David Comeaux, PRO for the Heald Bank Race via email (comeauxvi@earthlink.net) or on his cell phone at (832) 236-3292.

16. TIME LIMIT

The Race Committee may not be on station after 1400 hours on Sunday April 27, 2014. A boat finishing after this time shall be prepared to record her own finishing time and report her finish in accordance with 15.4 above.

17. PROTESTS

- 17.1 Protesting boats shall notify the Race Committee via Channel 72 at the first reasonable opportunity after finishing. The alternate means of communication is to contact David Comeaux, PRO for the Heald Bank Race via email (comeauxvi@earthlink.net) or on his cell phone at (832) 236-3292.
- 17.2 Protest forms are available through US Sailing or at the LYC Club office.
- 17.3 Protests shall be filed in writing and submitted to the LYC office not later than 1900 hours on Sunday, April 27, 2014.
- 17.4 The times and location of protest hearings will be published on the Official Race Notice Board by 1600 hours on Monday, April 28, 2014.

18 SCORING

The Low Point Scoring System of RRS. Appendix A will apply. PHRF will be scored using time-on-distance (TOD) scoring.

19 RESULTS

Race results will be posted on the official notice board by Monday, April 28, 2014 or upon completion of all Protest activities.

20 PRIZES

Awards will be presented on May 18, 2014 at the Shoe Regatta Awards Ceremony. The Old Winch Trophy will be awarded to the overall class winner in the Spinnaker class. The Navigator Trophy will be awarded to the overall winner of the Non-spinnaker classes.

21 DISCLAIMER OF LIABILITY

Competitors participate in the regatta entirely at their own risk. See RRS 4, Decision to Race. The organizing authority will not accept any liability for material damage or personal injury or death sustained in conjunction with or prior to, during, or after the regatta.

22 ATTACHMENTS

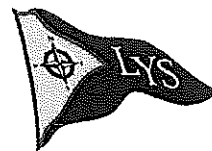
Attachment A: Starting Order, 1 page

Attachment B: Courses, 6 pages

Attachment C: Photographs of two offshore rigs, 2 pages



LITTLE
YACHT
SALES



**Lakewood Yacht Club
HEALD BANK RACE**

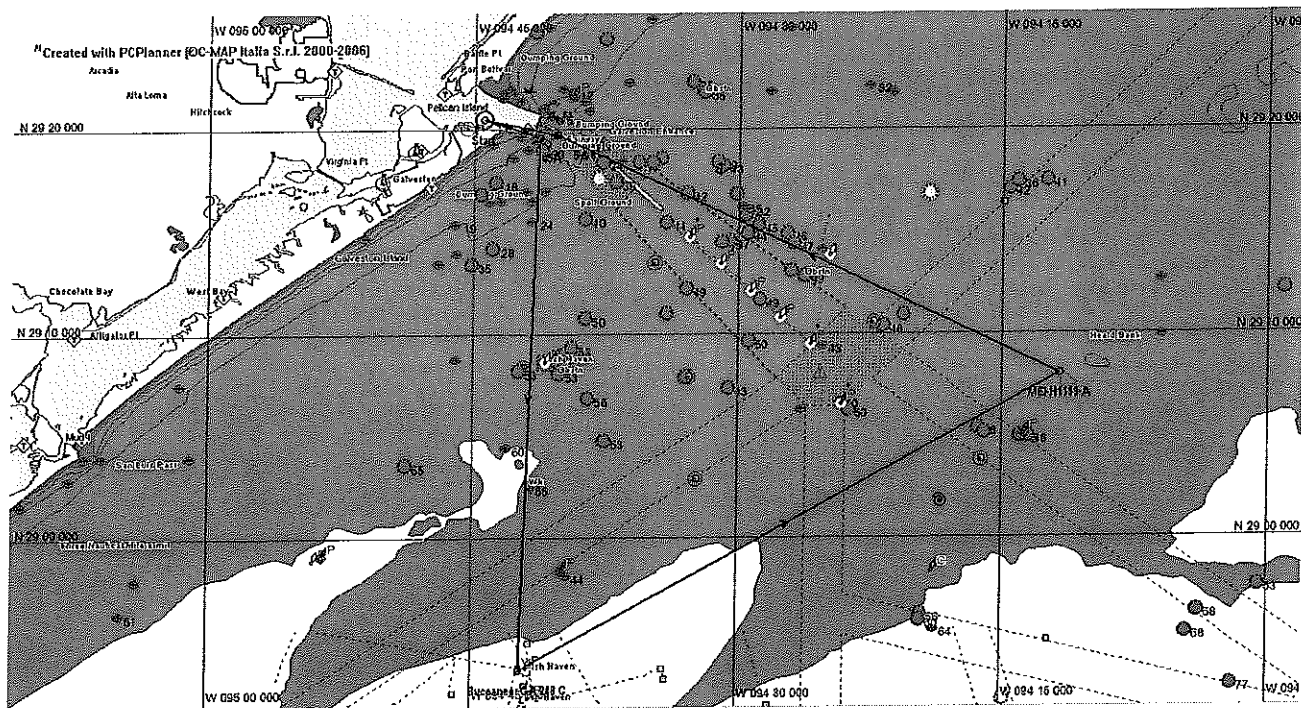
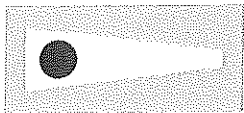
APRIL 26-27, 2014

ATTACHMENT A

STARTING ORDER

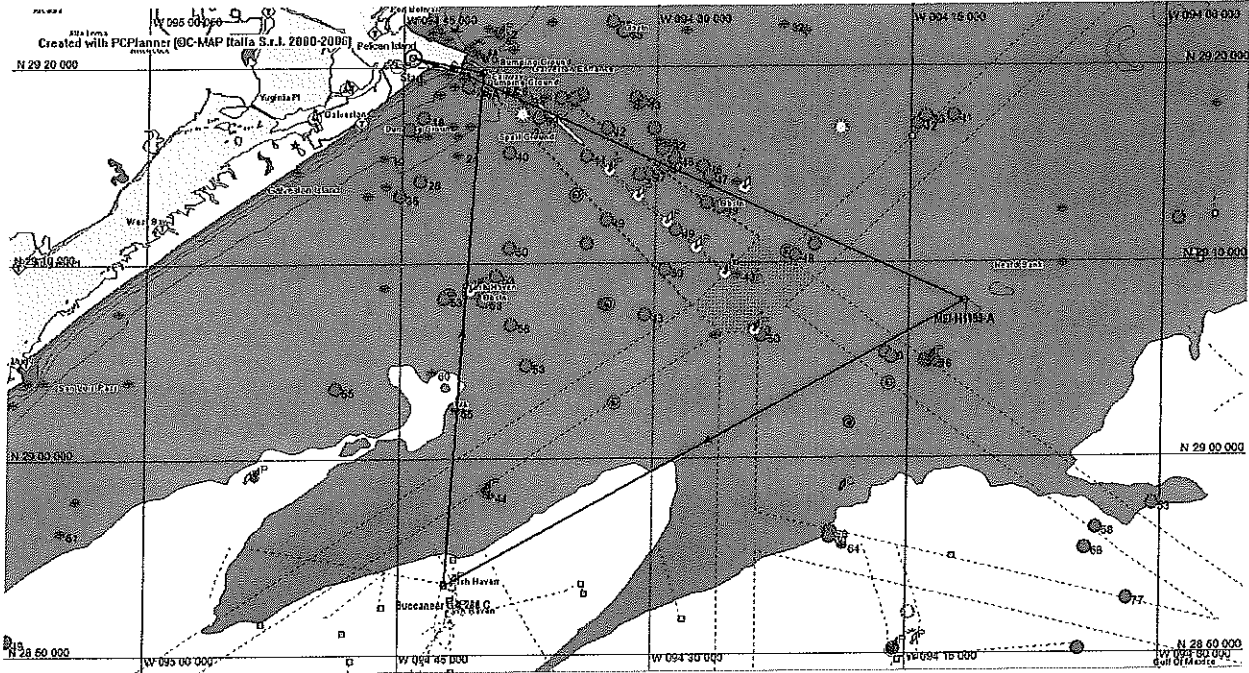
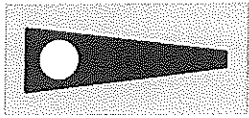
Warning	Class	Flag
1255	PHRF Spinnaker	Blue
1325	Cruising Non-Spinnaker	Pink
1335	PHRF Non-Spinnaker	Brown

Heald Bank Offshore Race Attachment B
Course #1



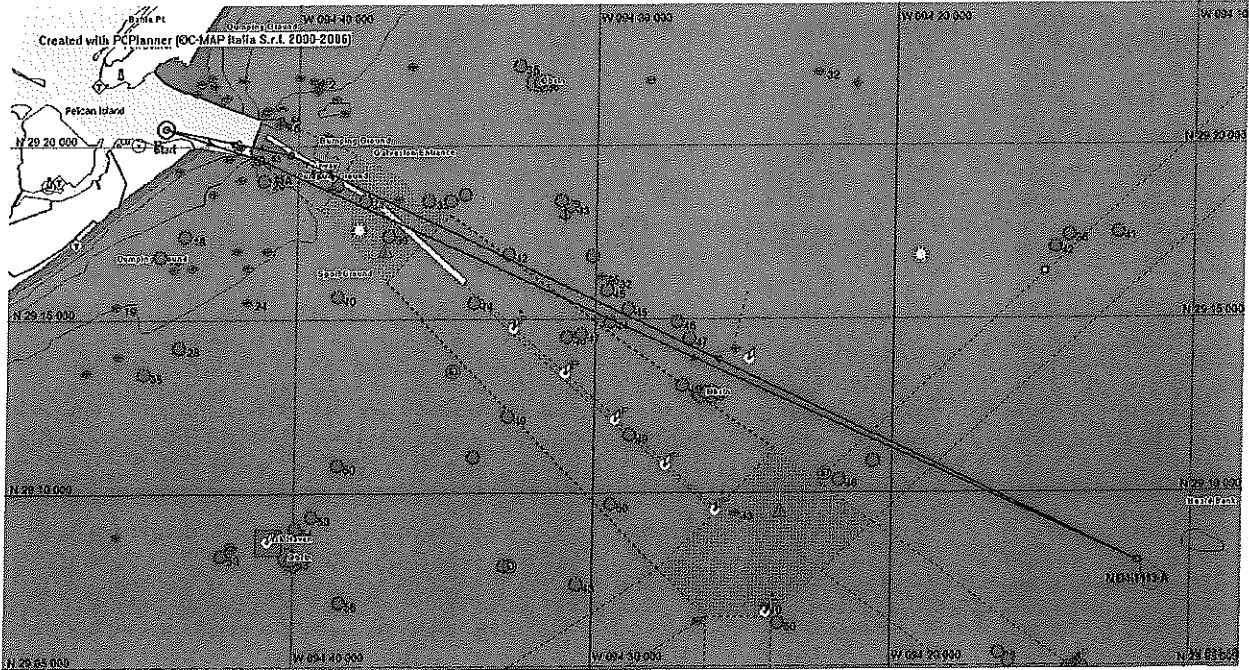
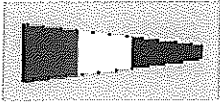
Name	Description	Lat	Lon	BRG	Dist	Dist tot
Start	Start Btwn #11 & Flag	29°20.537 N	094°44.476 W		(Nm)	(Nm)
Gal South Jetty #5A	Gal #5A to Starboard	29°19.640 N	094°41.274 W	108°	2.93	2.93
Buccaneer GA 288 C	GA 288 C to Port	28°53.621 N	094°42.227 W	182°	26.03	28.96
MEI-H1199-A	MEI-H1199-A to Port	29°08.030 N	094°11.725 W	62°	30.32	59.28
GAL Entrance 5 & 6	Btwn Gal Entrance 5&6	29°19.771 N	094°40.257 W	295°	27.53	86.81
Finish	Finish Btwn #11 & Flag	29°20.537 N	094°44.476 W	282°	3.76	90.57

Heald Bank Offshore Race Attachment B
Course #2



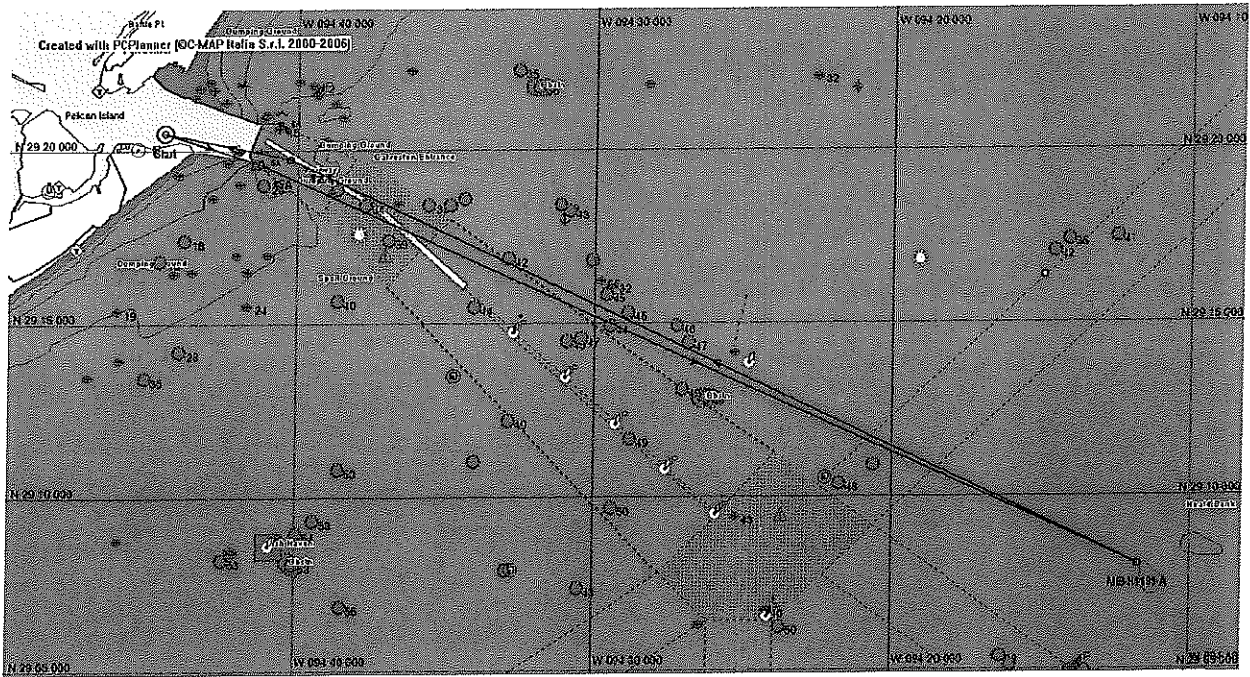
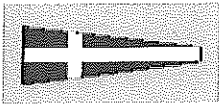
Name	Description	Lat	Lon	BRG	Dist (Nm)	Dist tot (Nm)
Start	Start Btwn #11 & Flag	29°20.537 N	094°44.476 W			
Gal South Jetty #5A	Gal #5A to Starboard	29°19.640 N	094°41.274 W	108°	2.93	2.93
MEI-H1199-A	MEI-H1199-A to Stbd	29°08.030 N	094°11.725 W	114°	28.28	31.21
Buccaneer GA 288 C	GA 288 C to Stbd	28°53.621 N	094°42.227 W	242°	30.32	61.53
Gal Entrance 5 & 6	Btwn Gal Entrance 5&6	29°19.771 N	094°40.257 W	4°	26.21	87.73
Finish	Finish Btwn #11 & Flag	29°20.537 N	094°44.476 W	282°	3.76	91.49

Heald Bank Offshore Race Attachment B
Course #3



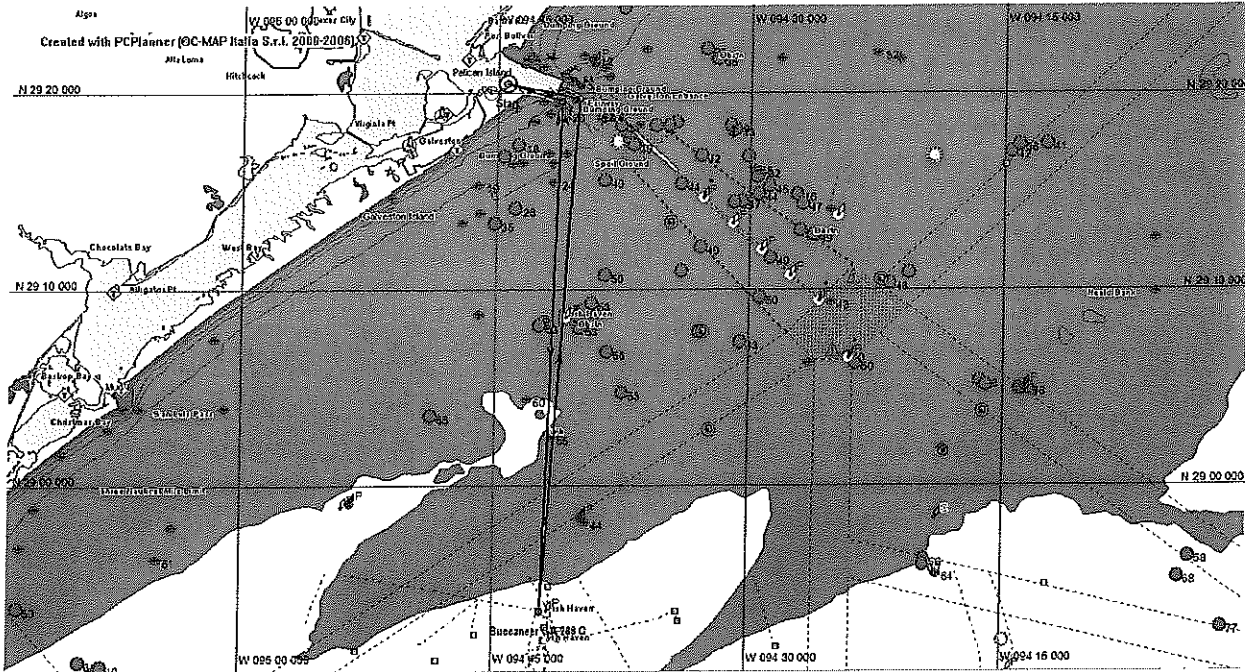
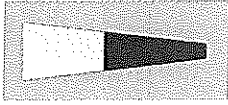
Name	Description	Lat	Lon	BRG	Dist	Dist tot
Start	Start Btwn #11 & Flag	29°20.537 N	094°44.476 W		(Nm)	(Nm)
Gal South Jetty #5A	Gal Jetty #5A to Stbd	29°19.640 N	094°41.274 W	108°	2.93	2.93
MEI-H1199-A	MEI-H1199-A to Stbd	29°08.030 N	094°11.725 W	114°	28.28	31.21
Gal Entrance 5 & 6	Btwn Gal Entrance 5&6	29°19.771 N	094°40.257 W	295°	27.53	58.74
Finish	Finish Btwn #11 & Flag	29°20.537 N	094°44.476 W	282°	3.76	62.5

Heald Bank Offshore Race Attachment B
 Course #4



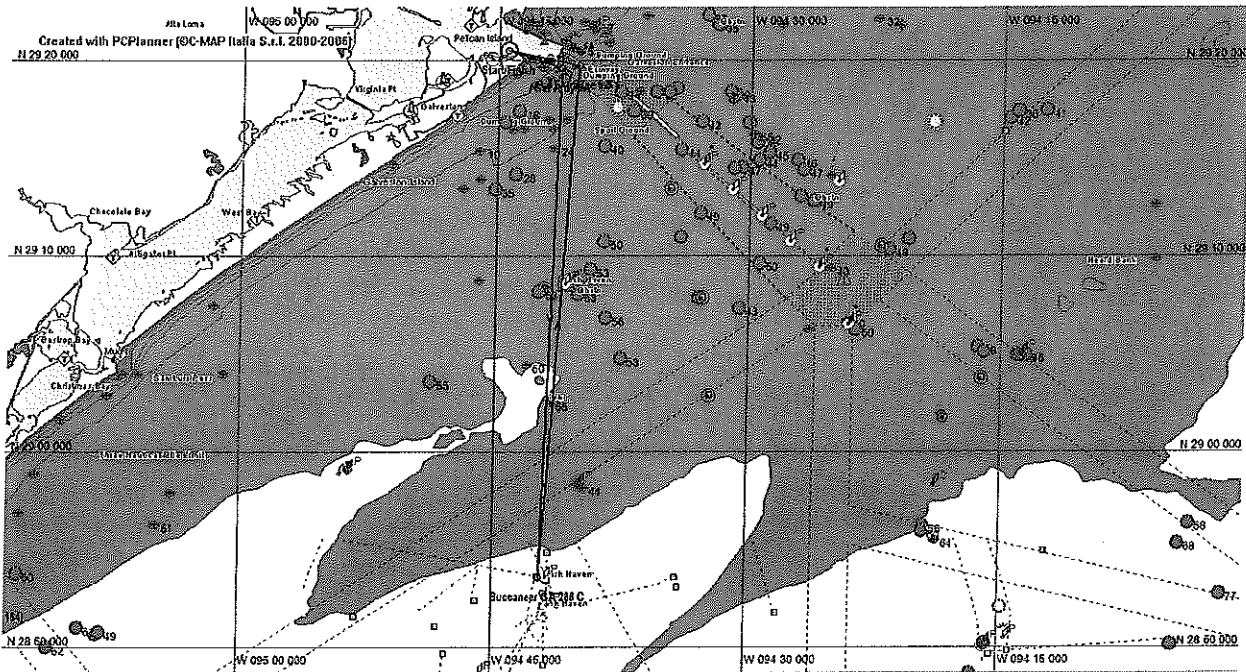
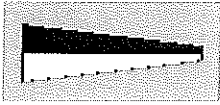
Name	Description	Lat	Lon	BRG	Dist	Dist tot
Start	Start Btwn #11 & Flag	29°20.537 N	094°44.476 W		(Nm)	(Nm)
Gal South Jetty #5A	Gal Jetty #5A to Stbd	29°19.640 N	094°41.274 W	108°	2.93	2.93
MEI-H1199-A	MEI-H1199-A to Port	29°08.030 N	094°11.725 W	114°	28.28	31.21
Gal Entrance 5 & 6	Btwn Gal Entrance 5&6	29°19.771 N	094°40.257 W	295°	27.53	58.74
Finish	Finish Btwn #11 & Flag	29°20.537 N	094°44.476 W	282°	3.76	62.5

Heald Bank Offshore Race Attachment B
Course #5



Name	Description	Lat	Lon	BRG	Dist	Dist tot
Start	Start Btwn #11 & Flag	29°20.537 N	094°44.476 W		(Nm)	(Nm)
Gal South Jetty #5A	Gal Jetty #5A to Stbd	29°19.640 N	094°41.274 W	108°	2.93	2.93
Buccaneer GA 288 C	Bucaneer 288 C to Port	28°53.621 N	094°42.227 W	182°	26.03	28.96
Gal Entrance 5 & 6	Btwn Gal Entrance 5 & 6	29°19.771 N	094°40.257 W	4°	26.21	55.17
Finish	Finish Btwn #11 & Flag	29°20.537 N	094°44.476 W	282°	3.76	58.93

Heald Bank Offshore Race Attachment B
Course #6



Name	Description	Lat	Lon	BRG	Dist	Dist tot
Start	Start Btwn #11 & Flag	29°20.537 N	094°44.476 W		(Nm)	(Nm)
Gal South Jetty #5A	Gal Jetty #5A to Stbd	29°19.640 N	094°41.274 W	108°	2.93	2.93
Buccaneer GA 288 C	Bucaneer 288 C to Stbd	28°53.621 N	094°42.227 W	182°	26.03	28.96
Gal Entrance 5 & 6	Btwn Gal Entrance 5 & 6	29°19.771 N	094°40.257 W	4°	26.21	55.17
Finish	Finish Btwn #11 & Flag	29°20.537 N	094°44.476 W	282°	3.76	58.93

HEALD BANK OFFSHORE RACE ATTACHMENT C

Buccaneer Rig
Approx.
28° 53.621'N
94° 42.227'W



HEALD BANK OFFSHORE RACE ATTACHMENT C

