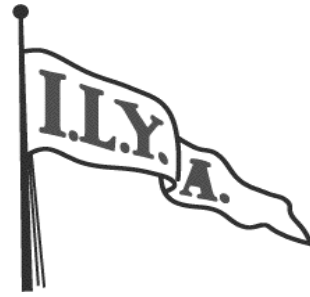


**SAILING INSTRUCTIONS FOR
INLAND LAKE YACHTING ASSOCIATION (ILYA)
IOD CHAMPIONSHIP REGATTA
JULY 27-29, 2014
CEDAR LAKE YACHT CLUB
HARTFORD, WISCONSIN
Headquarters: Cedar Lake Yacht Club
ILYA Regatta Representative: Jim Zaiser
(All times given are Central Daylight Time)**



Sailing is an activity that has an inherent risk of damage and injury. Competitors in this event are participating entirely at their own risk. See RRS 4, Decision to Race. The race organizers (the organizing authority, race committee, protest committee, host club, sponsors, or any other organization or official) will not be responsible for damage to any boat or other property or the injury to any competitor, including death, sustained as a result of participation in this event. By participating in this event, each competitor, or in the case of minors, each competitor's parent or guardian agrees to release the race organizers from any and all liability associated with such competitor's participation in this event to the fullest extent permitted by law.

1. RULES

The regatta will be governed by the rules as defined in the current Racing Rules of Sailing.

2. ENTRIES

The regatta is open to International Optimist Dinghies. Age restrictions per SI 20.3 (below apply). Helms-persons shall be Regular, Family, Youth, Dinghy, or Life Members of the ILYA. The Green Fleet is intended for beginning sailors. No skipper who has participated in a previous ILYA Championship Optimist Regatta may compete in the Green Fleet. Eligible boats may be entered by completing registration with the Association.

3. NOTICE TO COMPETITORS

Notices to competitors will be posted on the official notice board located at Regatta Headquarters.

4. COMPETITORS' BRIEFING MEETING

Red, White, and Blue Fleets: 9:00 a.m., Monday, July 28, at Regatta Headquarters.

Green Fleets: 9:30 a.m., Monday, July 28, at Regatta Headquarters.

5. CHANGES TO SAILING INSTRUCTIONS

Any changes to the sailing instructions (SI) will be posted no later than 90 minutes before the first warning signal on the day it will take effect. Except that any change in the schedule of races will be posted by 1800 on the day before it will take effect.

6. SIGNALS MADE ASHORE

6.1 Signals made ashore will be displayed by the Fleet Signal Boat located at Regatta Headquarters.

6.2 When the Answering Pennant ("AP") is displayed ashore, '1 minute' is replaced with 'not less than 45 minutes in the Race Signals AP'.

6.3 Approximately one hour prior to the scheduled warning signal of the first race of the day, the signal boat will fire a gun, or make another sound signal. When multiple fleets are scheduled to start at the same time, only one signal boat may make this signal.

7. NOT USED

8. NUMBER AND SCHEDULE OF RACES

8.1 Red, White, and Blue Fleets:

Warning signal for first race: Monday, July 28, 10:00 a.m. Eight races are scheduled, of which one must be completed to constitute a regatta. Except when races are sailed back-to-back, the time of the warning signal for subsequent races will be posted. If one race is completed, no warning signal will be made after 3:00 p.m. on Tuesday, July 29. In any case, no warning signal will be made after 4:00 p.m. on Tuesday, July 29.

8.2 Green Fleet

Warning signal for first race: Monday, July 28, 10:30 a.m. Eight races are scheduled for the Green Fleet, of which one must be completed to constitute a regatta. Except when races are sailed back-to-back, the time of the warning signal for subsequent races will be posted. If one race is completed, no warning signal will be made after 3:00 p.m. on Tuesday, July 29. In any case, no warning signal will be made after 3:00 p.m. on Tuesday, July 29.

9. CLASS FLAG

The class flag will be a white flag with the IOD logo.

10. RACING AREA

The racing area will be the navigable waters of Big Cedar Lake, and will be described at the Competitor Briefings or by notice on the Official Notice Board at Regatta Headquarters.

11. THE COURSE

11.1 The courses and their designations are shown as COURSE ILLUSTRATIONS.

11.2 No later than the warning signal, the race committee signal boat will display the course designation and approximate compass bearing to the first mark.

11.3 When there is a gate, boats shall sail between the gate marks from the direction of the previous mark and round either gate mark. If only one mark of the gate is present, it should be rounded, leaving it to port.

12. MARKS

All marks will be large orange balls and the offset mark will be an orange ball.

13. THE START

- 13.1 Races will be started by using RRS 26.
- 13.2 RRS 30.1 (the I FLAG RULE) will be in effect for all starts. This changes Race Signals.
- 13.3 The starting line will be:
 - 13.3.1 between a staff displaying an orange flag on the RC boat at the starboard end of the line, and either a staff displaying an orange flag on a RC boat at the port end or the course side of a nearby mark.
 - 13.3.2 or from a staff displaying an orange flag on a RC boat at the starboard end to a staff displaying an orange flag(s) on a RC boat in the approximate center of the starting line, and thence to a staff displaying an orange flag on a RC boat at the port end.
- 13.4 A boat starting later than ten minutes after her starting signal will be scored DNS. This changes RRS A4.1.
- 13.5 If a midline boat is to be used on the starting line in accordance with SI 13.3.2, a notice to that effect will be posted on the official notice board.
- 13.6 If a midline boat is in place in accordance with SI 13.3.2, yachts subject to the I FLAG RULE (RRS 30.1) shall sail to the pre-start side of the line around either end, or around the mid-line boat, leaving it to port as if it were the port end of the starting line, before starting. This modifies RRS 30.1. (See Course Illustrations.)
- 13.7 If RRS 30.2 is used, flag Z will be displayed alone as the Preparatory Signal (flag I is to be assumed.) This changes Race Signals.
- 13.8 If the race is abandoned after the starting signal under the Z or Black Flag, all competitors who received a 20% scoring penalty under the RRS 30.2 or were disqualified under the RRS 30.3 in the abandoned race are again eligible to race without penalty. This changes RRS 30.2 and 30.3.

14. RECALLS

- 14.1 Boats that are OCS under an individual recall will be notified by hail.
- 14.2 Following the display of Code Flag "X", the Race Committee *will attempt to announce the sail number* of all boats identified on the course side of the starting line at the starting signal and boats that must comply with RRS 30.1. Such announcement is a courtesy and failure of the race committee to make the announcement, or of boats to hear or understand it, or the order of the hails, shall not be grounds for granting redress.

15. CHANGE OF THE NEXT LEG OF THE COURSE

- 15.1 To change the next leg of the course, the race committee will either move the original mark (or the finishing line) to a new position, or the RC will lay a new mark and remove the original mark as soon as practicable.
- 15.2 The RC may adjust gate marks without further signaling to maintain the appropriate course configuration.

16. THE FINISH

- 16.1 The finishing line will be displayed between a staff displaying an orange flag on a Race Committee boat and the course side of a nearby mark, or between staffs displaying orange flags on two Race Committee boats.
- 16.2 On courses which are to finish downwind, the finish shall be a dogleg finish. See illustration below.
- 16.3 Flag "A" displayed with no sound while boats are finishing means 'no more racing today.'
- 16.4 Flag "H" displayed with no sound while boats are finishing means 'racing will continue after a break either on shore or on the water.'
- 16.5 When neither Flag "A" nor Flag "H" is flying while boats are finishing, another race may follow immediately.
- 16.6 A boat that retires from a race shall notify a RC boat before leaving the racing area, or, if that is not possible, notify a regatta official at Regatta Headquarters immediately upon arrival on shore.

17. PENALTIES

Penalty for breaking rules of Part 2 (RRS44): The Two-Turns Penalty, RRS 44.2, shall apply.

18. TIME LIMIT

- 18.1 The time limit will be 45 minutes.
- 18.2 Boats still racing 20 minutes after the first boat sails the course and finishes will be scored the position of the last boat to finish plus 2. This changes RRS 35 and A4.1.

19. PROTEST AND REQUESTS FOR REDRESS

- 19.1 A boat intending to protest about an incident that occurs in the racing area shall, as soon as practicable, notify the RC finish boat on station of her intention, including the sail number of the boat (s) being protested. This changes RRS 61.1 (a).
- 19.2 Protests shall be written on forms available at Regatta Headquarters and delivered there within the protest time, which will end one hour after the signal boat docks. The docking time will be posted.
- 19.3 Notices of protests and requests for redress will be posted within 20 minutes of the expiration of the protest time limit to inform competitors of hearings in which they are parties or named as witnesses. Hearings will be held at a location at Regatta Headquarters.
- 19.4 Notice of a request for redress including the nature of the request and the grounds on which it is filed shall be considered to fulfill the requirements of the prescription to RRS 63.2
- 19.5 On the last day of the regatta a request for reopening a hearing shall be delivered:
 - (a) within the protest time limit if the party requesting reopening was informed of the decision on the previous day.
 - (b) No later than 30 minutes after the party requesting reopening was informed of the decision on that day.
 - (c) This changes RRS 66.
- 19.6 A boat that does not comply with 44.1 or 44.2, but prior to a hearing, acknowledges breaking a rule, shall be penalized 50% of the number of boats entered, but not less than six places, except that she shall not be scored worse than DNF. as approved by the Protest Committee.

20. SCORING

20.1 Red, White and Blue Fleets:

The Low Point System, RRS A4, will apply, except that RRS A2 is changed so that each boat's total score will be the sum of her scores for all races unless six or more races are completed. If six or more races are completed, each boat shall discard her worst score, except when prohibited under RRS 90.3(b).

20.2 Green Fleet:

The Low Point System, RRS A4, will apply, except that RRS A2 is changed so that each boat's total score will be the sum of her scores for all races unless six or more races are completed. If six or more races are completed, each boat shall discard her worst score, except when prohibited under RRS 90.3(b). 20.2 Red, White and Blue Fleet sailors will be scored for overall honors and colored fleet honors based on her finishes in the overall fleet. The Green Fleet will sail on a separate course.

20.3 The fleets will be comprised of the following age groups:

Red Fleet: Helmspersons who are thirteen or fourteen or fifteen years of age on July 27, or a sixteen-year-old who has turned sixteen during calendar year 2014.

Blue Fleet: Helmspersons who are eleven or twelve years of age on July 27, 2014.

White Fleet: Helmspersons who are eight or nine or ten years of age on July 27, 2014.

Green Fleet: Helmspersons who are 5 to 15 years of age as of July 27, 2014.

21. NOT USED

22. SAFETY

22.1 Each competitor, including skipper and crew, his parent or legal guardian, is ultimately responsible for such competitor's safety.

22.2 All competitors shall wear, while on the water, a properly fastened U.S. Coast Guard approved PFD.

22.3 A boat that retires from a race shall notify a RC boat before leaving the racing area, or, if that is not possible, notify a regatta official at Regatta Headquarters immediately upon arrival on shore.

22.4 Boats that are not leaving the harbor to race shall inform Regatta Headquarters or a regatta official prior to the start of the first race of the day.

22.5 A boat that breaks 22.1, 22.2, 22.3, 22.4 shall receive, at the discretion of the protest committee, and without a hearing, a warning or penalty, which may be added to a boat's series score, disqualification, or other appropriate penalty. This changes RRS 63.1.

23. RADIO COMMUNICATION

The only communication devices that may be used by competitors when racing are: (a) a weather monitor and (b) a cell phone that may be used for emergency purposes only. The penalty for breaking this rule will be total disqualification from the regatta or such lesser penalty as may be determined by the Protest Committee.

24. SUPPORT AND COACH BOATS

Except when rendering assistance to a boat believed to be in distress, support and coach boats shall stay outside of the area where boats are racing from the time of the preparatory signal until the coach's Optimist or Optimists have finished and are well clear of the course and finish line, or until the Race Committee signals a postponement, general recall, or abandonment. The penalty for failing to comply with these requirements or the verbal instructions of the Race Committee will be at the discretion of the Chief Judge. The penalty may be applied to any or all boats associated with the support or coach boat.

25. OUTSIDE HELP

A Red, White or Blue fleet boat that receives outside help other than help permitted by RRS 41, or from a non competitor or non competing boat, shall retire. Help is allowable in the Green fleet under the supervision of the PRO. This changes RRS 41.

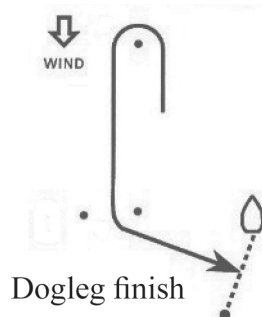
26. MEDIA RIGHTS

Competitors give absolute right and permission for video footage or photographs of themselves or their boat generated during an ILYA event to be published in any media for press, editorial or advertising purposes.

27. GREEN FLEET MODIFICATIONS

Modifications to these rules as appropriate to the skill level of the Green Fleet may be implemented by the race committee without notice. Anticipated modifications will be described at the Green Fleet Competitors' Briefing.

07/27/14



COURSE ILLUSTRATIONS

COURSE DISPLAY SHORTHAND

WINDWARD/LEEWARD COURSES ARE DESIGNATED WITH A "W" FOR COURSES THAT FINISH UPWIND, AND AN "L" FOR COURSES THAT FINISH DOWNWIND. THE NUMERAL ACCOMPANYING THE COURSE DESIGNATION INDICATES THE NUMBER OF LEGS OF THE COURSE.

ALL OTHER COURSES ARE DESIGNATED BY A COMBINATION OF LAPS DISPLAYED USING THE TYPE OF LAP (T = TRIANGLE LAP), A NUMBER INDICATING THE NUMBER OF SUCCESSIVE REPETITIONS OF THAT PARTICULAR TYPE OF LAP, AND A MODIFIER (+) IF THE FINISH IS TO BE TO WINDWARD.

WINDWARD/LEEWARD EXAMPLES

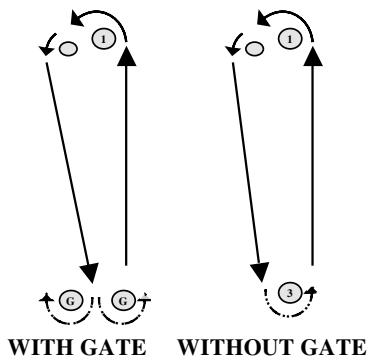
- W3 = 3 LEGS (FINISHING UPWIND)
- W5 = 5 LEGS (FINISHING UPWIND)
- L4 = 4 LEGS (FINISHING DOWNWIND)
- L6 = 6 LEGS (FINISHING DOWNWIND)

OTHER COURSE EXAMPLES

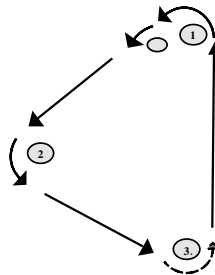
- WT+ = WINDWARD LEEWARD FOLLOWED BY TRIANGLE PLUS UPWIND LEG TO FINISH
- W2T = TWO WINDWARD LEEWARD LAPS PLUS A TRIANGLE, FINISHING DOWNWIND
- O+ = TRIANGLE LAP FOLLOWED BY A WINDWARD LEEWARD LAP PLUS UPWIND LEG TO FINISH

NOTE: AN RC BOAT MAY BE SUBSTITUTED FOR MARK(S)  OR  ON STARTING OR FINISHING LINES

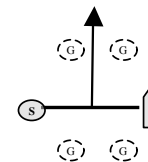
W = WINDWARD/LEEWARD LAP



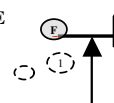
T = TRIANGLE LAP



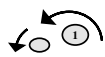
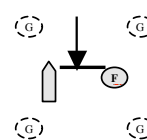
STARTING LINE



+ = UPWIND FINISHING LINE



DOWNWIND FINISHING LINE



1 = WINDWARD MARK WITH OFFSET



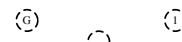
G = LEEWARD GATE



2 = GYBE MARK

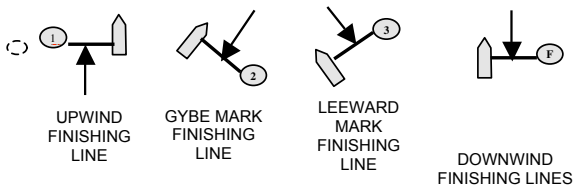


3 = LEEWARD MARK IF TRIANGLE OR NO GATE



MARKS TO BE IGNORED IF PRESENT

FINISHING LINES – RULE 32 (REDUCED NUMBER OF LEGS)



ALLOWABLE ROUND-AN-END COURSES WITH MID-STARTING LINE BOAT (ALSO SEE S1s)

