

**SAILING INSTRUCTIONS**  
**2014 International 5o5 North American Championship**  
May 21-25, Santa Cruz Yacht Club  
Santa Cruz, CA, USA

**1 RULES**

- 1.1 The regatta will be governed by the rules as defined in *The Racing Rules of Sailing*.
- 1.2 All US Sailing prescriptions are deleted except the prescriptions to rules 67, 70.5(a), and 76.1. Rule 61.4 and Appendix R are not modified or deleted. The prescription to Rule 40 is deleted as permitted by the final sentence of the prescription to Rule 88.2.
- 1.3 All competitors shall wear personal flotation devices while afloat, except for brief periods while changing or adjusting clothing or personal equipment. Wet suits and dry suits are not personal flotation devices. This changes Rule 40 and the Part 4 preamble.
- 1.4 If there is a conflict between languages, the English text will take precedence.

**2 NOTICES TO COMPETITORS**

Notices to competitors will be posted on the official notice board located in the northeast corner of the Santa Cruz Yacht Club clubhouse, upper level.

**3 CHANGES TO SAILING INSTRUCTIONS**

Any change to the sailing instructions will be posted before 0900 hours on the day it will take effect, except that any change to the schedule of races will be posted by 2200 hours on the day before it will take effect.

**4 SIGNALS MADE ASHORE**

- 4.1 Signals made ashore will be displayed on the flagpole on the southeast corner of the clubhouse, upper level.
- 4.2 When flag AP is displayed ashore, '1 minute' is replaced with 'not less than 60 minutes' in the race signal AP.

**5 SCHEDULE OF RACES**

- 5.1 Dates, times and number of races see the Notice of Race as changed. The scheduled time of the first warning signal is 1230.
- 5.2 The scheduled number of races per day is three.
- 5.3 Subsequent races will be started as soon as reasonably possible after the completion of the previous race. Competitors are to remain in the vicinity of the start after each race.
- 5.4 On the last day of the Championship no warning signal will be made after 1500 hours.

**6 CLASS FLAGS**

The class flag will be the International 5O5 class flag.

**7 RACING AREA**

Attachment A shows the approximate location of the racing area.

## 8 THE COURSES

- 8.1 Attachment B show the courses, including the approximate angles between legs, the order in which marks are to be passed, and the side on which each mark is to be left.
- 8.2 No later than the warning signal, the race committee will display the course. The course to be sailed will be shown by the display of the appropriate numeral pennant.

## 9 MARKS

Marks to be used are described in Attachment B.

## 10 THE START

- 10.1 Races will be started according to Rule 26 with the warning signal made five (5) minutes before the starting signal.
- 10.2 The Race Committee will display an orange flag with multiple sounds at least four (4) minutes prior to the warning signal.
- 10.3 Races will be started either by a gate start or a fixed line start. The Race Committee will attempt to use a gate start whenever reasonably possible.
- 10.4 **Gate Start**
  - 10.4.1 When a gate start is to be used, the Race Committee will display flag "G" on the Race Committee signal boat no later than the warning signal.
  - 10.4.2 The starting line, except for the Pathfinder, will be between Mark GL and the center of the stern of the Gate Launch, displaying flag "G".
  - 10.4.3 Signals will be displayed from the Race Committee signal boat may be duplicated on the Gate Launch.
  - 10.4.4 The Pathfinder for the first race will be appointed by the Race Committee. The Pathfinder for subsequent races will be the boat that finished tenth (10th) in the preceding race. When this boat is unable to race or has been Pathfinder previously in the event, the Pathfinder will be the boat that finished eleventh (11th) in the preceding race, this procedure will continue until a Pathfinder is selected who has not previously served as the Pathfinder.
  - 10.4.5 The sail number of the Pathfinder will be displayed on the Race Committee signal boat prior to the warning signal.
  - 10.4.6 The length of the time between the starting signal and when the Gate Launch will stop at the starboard end of the starting line shall be 2 minutes.
  - 10.4.7 Prior to the warning signal, the Pathfinder shall report to the Gate Launch, also displaying flag "G" and positioned near the Race Committee signal boat. The Pathfinder shall follow the Race Committee's instructions. If the Pathfinder fails to comply with this instruction, she may be disqualified by the Race Committee without a hearing and shall be ineligible for any restart of that race. If the race is restarted on the same day SI 10.4.15 will apply. This changes Appendix A5.
  - 10.4.8 Within the 10 seconds after the starting signal, the Pathfinder shall pass mark "GL" on a close-hauled port tack course. The Gate Launch will keep station close astern of the starboard quarter of the Pathfinder. The starting line will be open and boats may start once the Gate Launch has cleared mark "GL". Rule 29.2 (Individual Recall) shall not apply.
  - 10.4.9 The Pathfinder shall sail her close-hauled course until released by a sound signal from the Gate Launch, after which she ceases to be a starting mark and may continue or tack onto starboard tack.

- 10.4.10 After the release of the Pathfinder the Gate Launch will maintain her course and speed until the time signaled by the Race Committee has elapsed. She will then stop, lower flag "G" half way and make a long sound signal. One minute after the Gate Launch has stopped, the Race Committee will signal the closure of the starting line by lowering flag "G" on both the Gate Launch and the Race Committee signal boat and make a short sound signal. Any boat attempting to start after lowering flag "G" will be scored DNS without a hearing.
- 10.4.11 All boats, except the Pathfinder, shall start on starboard tack.
- 10.4.12 A boat not having started correctly and which is on the port side of the extension of the Gate Launch's course between the starting signal and the closure of the starting line shall not cross the starting line from the course side.
- 10.4.13 A boat that touches the Gate Launch after the preparatory signal shall take a one-turn penalty according to Rule 44.2 after she has started.
- 10.4.14 After the preparatory signal a boat shall be scored DSQ by the Race Committee without a hearing, and SI 10.4.15 will apply, if while approaching the line to start she:
- (1) causes the Pathfinder or Gate Launch to alter course or speed, or
  - (2) touches the Pathfinder, or
  - (3) passes between or attempts to pass between the Pathfinder and the Gate Launch. .
- This changes Appendix A5.
- 10.4.15 If a boat has been disqualified according to SI 10.4.7 or SI 10.4.14 and her sail number is displayed on the Race Committee signal boat for at least three (3) minutes prior to the new warning signal, she shall be ineligible for any restarts of that race. She shall leave the starting area before the next warning signal; however, a boat breaking this rule may participate in the restarted race providing she advises the Race Committee prior to the warning signal that she intends to protest another boat and/or requests a redress in connection with the incident. If either her protest is dismissed or her request for redress is denied, she shall be scored DNE for the race in question. This changes Rules 36, 62.2, 63.1 and Appendix A5.
- 10.4.16 The Race Committee may abandon a start in case of great disadvantage to some boats. (e.g. through the wind conditions or an interference with the Pathfinder/Gate Launch.) Failure to comply with this instruction is not grounds for redress.

## 10.5 **Line Start**

- 10.5.1 When a line start is used, the Race Committee will display flag "E" on the Race Committee signal boat no later than the warning signal.
- 10.5.2 The starting line will be between a staff displaying an orange flag on the Race Committee signal boat and Mark S at the port-end of the starting line.
- 10.5.3 A boat starting later than five (5) minutes after her starting signal will be scored DNS without a hearing. This changes Rules A4 and A5.

## 11 **CHANGE OF THE NEXT LEG OF THE COURSE**

- 11.1 To change the next leg of the course, the Race Committee will move the original mark (or move the finishing line) to a new position.
- 11.2 Except at a gate, boats shall pass between the Race Committee boat signaling the change of the next leg and the nearby mark, leaving the mark to port and the race committee boat to starboard. This changes Rule 28.1.
- 11.3 If the gate is replaced by only one mark, this mark shall be left to port.

## 12 **THE FINISH**

The finishing line will be between a staff displaying an orange flag on a Race Committee boat (leeward end) and a red round buoy, mark "F" (Windward end).

## 13 **PENALTY SYSTEM**

13.2 Rule 42.3(c) is replaced by Class Rule B13 as follows:

Except on a beat to windward, when surfing (rapidly accelerating down the face of a wave) or planing is possible, the boat's crew may pull the sheet and guy controlling any sail in order to initiate or maintain surfing or planing, but not more than three (3) repeated pulls and releases of the sail may be made for each wave or gust of wind.

## 14 **TIME LIMITS AND TARGET TIMES**

14.1 The target time is 50 minutes and the time limit is 80 minutes. The time limit for the first boat to reach the first mark is 30 minutes.

14.2 If no boat has reached the first mark or has sailed the course and finished within the time limits stated above the race shall be abandoned.

14.3 Failure to meet the target time will not be grounds for redress. This changes Rule 62.1(a).

14.4 Boats failing to finish within 20 minutes after the first boat sails the course and finishes will be scored DNF without a hearing. This changes Rules 35, A4 and A5.

## 15 **PROTESTS AND REQUESTS FOR REDRESS**

15.1 Protest forms are available at the regatta office and in the clubhouse. Protests and requests for redress or reopening shall be delivered there within the appropriate time limit.

15.2 The protest time limit is 60 minutes after the Race Committee signal boat has returned to her berth in the harbor.

15.3 Notices by the Race Committee or Jury will be posted on the official notice board to inform boats under Rule 61.1(b).

15.4 Notices will be posted not later than 30 minutes after the protest time limit to inform parties and witnesses of the beginning, the order and the place of protest hearings. Hearings will be held in the protest room, located on the lower level of the clubhouse, beginning as soon as possible.

15.5 Parties and witnesses shall stand by in time on the lower deck of the clubhouse.

15.6 Breaches of instructions 10.4, 18, 22, 23, and 24 and Rule 55 will not be ground for a protest by a boat. This changes Rule 60.1. Penalties for these breaches can be less than a DSQ at the discretion of the Jury.

15.7 On the last day of racing a request to re-open a hearing shall be delivered:

(1) within the protest time limit if the requesting party was informed of the decision on the previous day;

(2) no later than 30 minutes after the requesting party was informed of the decision on that day.

This changes Rule 66.

15.8 On the last scheduled day of racing a request for redress based on a Jury decision shall be delivered no later than 30 minutes after the decision was posted. This changes Rule 62.2.

## 16 **SCORING**

- 16.1 Three (3) races shall be completed to constitute a series.
- 16.2 When only four (4) races have been completed, a boat's series score will be the total of her race scores.
- 16.3 When five (5) or more races have been completed, a boat's series score will be the total of her race scores excluding her worst score.

## 17 **SAFETY REGULATIONS**

- 17.1 A boat that retires from a race shall notify the Race Committee as soon as possible.
- 17.2 If any one of the race signals AP over A, or AP over H, N over A or N over H is made on a Race Committee boat, all boats shall return to the harbor immediately.
- 17.3 While afloat, all boats shall carry a towline of at least 6mm in diameter and 10 meters in length.

## 18 **REPLACEMENT OF CREW OR EQUIPMENT**

- 18.1 Substitution of damaged or lost equipment is only allowed with approval of the Race Committee. Requests for substitution shall be made to the committee at the first reasonable opportunity.
- 18.2 Crew changes after the first race are only possible with the approval of the jury.

## 19 **EQUIPMENT AND MEASUREMENT CHECKS**

- 19.1 Each boat has to present a valid measurement certificate at registration.
- 19.2 Each boat is allowed to measure in two sets of sails, one set of spares and one set of foils as stated in the 505 Class Rules.
- 19.3 A boat or equipment may be inspected at any time for compliance with the class rules and sailing instructions. On the water, a boat can be instructed by a Race Committee equipment inspector or measurer to proceed immediately to a designated area for inspection.

## 20 **SUPPORT BOATS**

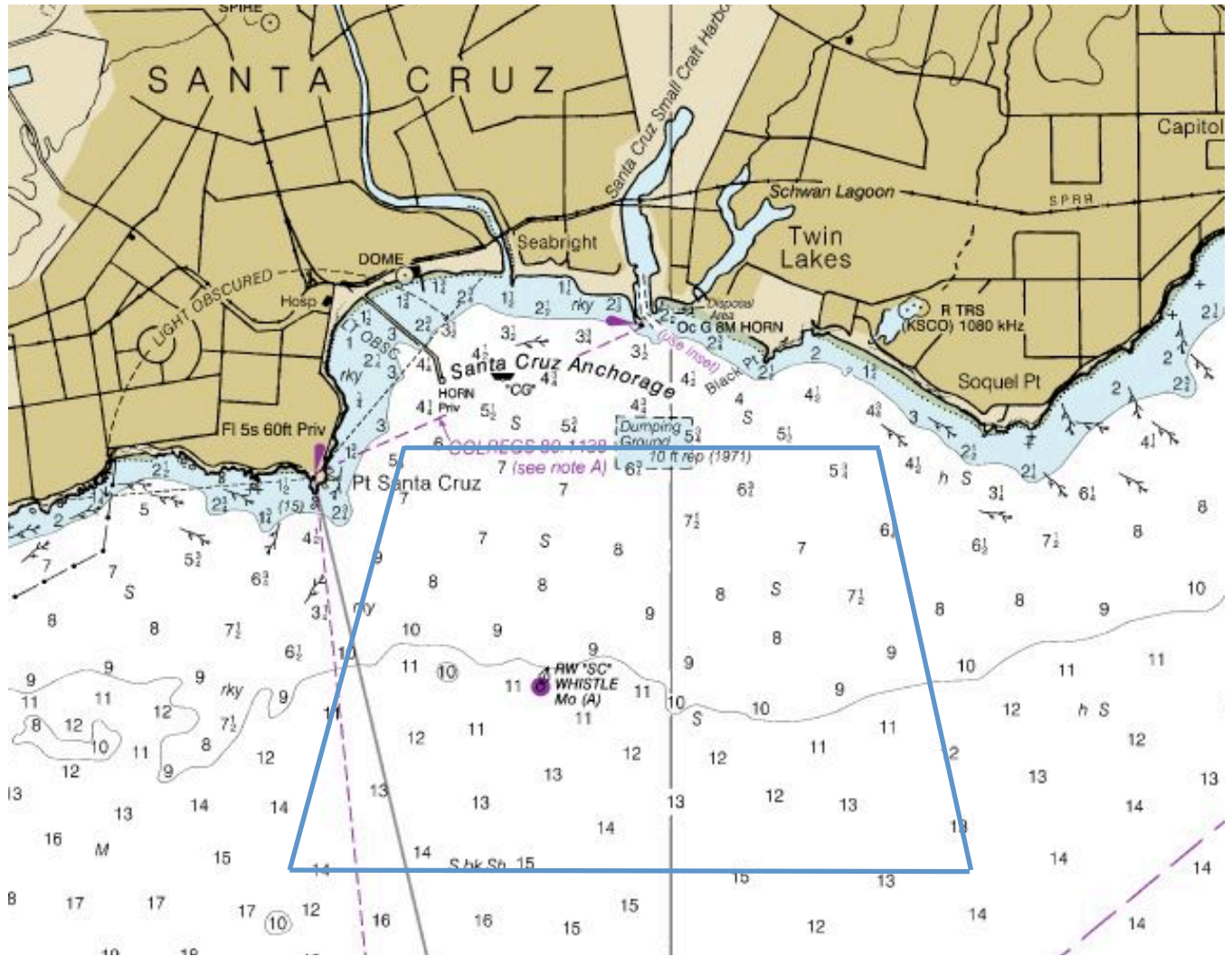
- 20.1 All support boats shall register with the Organizing Authority before the first race of the regatta, stating the name of all persons aboard and the sail number of all boats they are supporting.
- 20.2 Team leaders, coaches and other support personnel shall stay at least 100 yards outside areas where boats are racing from the time of the preparatory signal for the start until all boats have finished or until the race committee signals a postponement, general recall or abandonment.
- 20.3 Support and jury boats are required to monitor the safety radio frequency at all times and shall be required to undertake safety duties at the direction of the Principal Race Officer.

## 21 **PRESS BOATS**

- 21.1 The Organizing Authority may appoint one or more Press Boats, which will be allowed within the racecourse.
- 21.2 Press boats will display a respective flag or other identification symbol.

- 22     **BERTHING**  
Boats shall be kept in the assigned area in the dinghy park and shall maintain there for the duration of the event unless given permission by the jury to leave the dinghy park. (E.G. for repairs)
- 23     **RIGHT TO USE NAME AND LIKENESS**  
By participating in the Championship a competitor automatically grants to the organizing authority and its sponsors the right in perpetuity to make, use and show, from time to time at their discretion, any motion and non-motion pictures and live, taped or filmed television and other reproductions of him or her during the period of the competition, without compensation.
- 24     **RADIO COMMUNICATION**  
Except in an emergency, a boat shall neither make radio transmissions while racing nor receive radio communications. This restriction also applies to mobile telephones.
- 25     **PRIZES**  
See Notice of Race.
- 26     **DISCLAIMER OF LIABILITY**  
Competitors participate in the regatta entirely at their own risk. See Rule 4, *Decision to Race*. The Organizing Authority will not accept any liability for material damage or personal injury or death sustained in conjunction with or prior to, during, or after the event.
- 27     **INSURANCE**  
See Notice of Race as changed.

# Attachment A Racing Area



**Attachment B**  
**5o5 Courses**  
**2014 North American Championship**  
(Not To Scale)

Start is a Gate Start originating at mark GL

Mark S is an optional starting mark (used when a Gate Start is not possible)

Mark W is an Orange cone, a rounding mark, and is to be left to port.

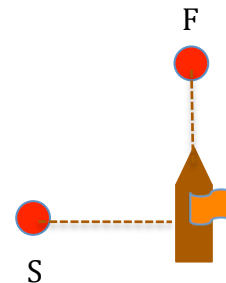
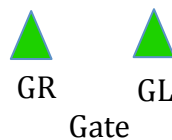
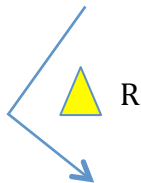
Mark R is a Yellow cone, a rounding mark, and is to be left to port.

Marks GR and GL are a Gate made up of two green cones.

When listed in a Course individually, Mark GL is a rounding mark and is to be left to port.

Finish is between Mark F and an orange flag displayed on the Signal Boat.

(All finishes, except when flag S is displayed to shorten course, are reaching finishes.)



Courses:

- 1 Start, W, Gate, W, GL, Finish
- 2 Start, W, Gate, W, R, GL, W, GL, Finish
- 3 Start, W, Gate, W, Gate, W, GL, Finish