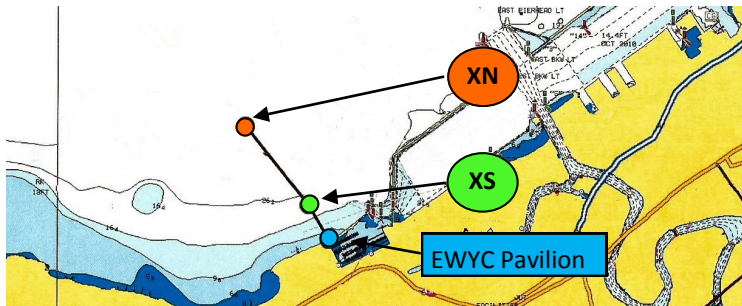
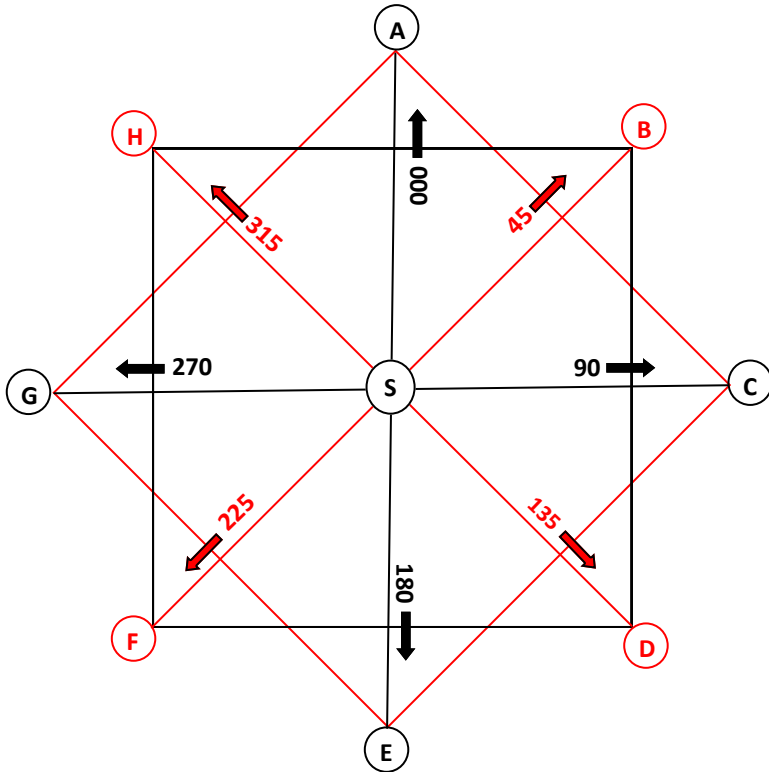


EWYC FIXED MARK COURSES



Course #	1st Round	2nd Round	3rd Round	Nautical Miles
1				4.8
2				8.8
3				4
4				8
5				6.8
6				8.8
7				6
8				4
9				2

	1st Substitute General Recall
	C - Change of Course
	I—Round the Ends
	L - Come Within Hail
	M - Missing Mark
	N - Race Abandoned
	S - Shorten Course
	X - Individual Recall
	AP— Post- ponement
	2nd Substitute — Another Race

Fixed Mark Locations & Mark Colors			
S	N 41.31.23 W 81.45.94	F	N 41.30.53 W 81.46.90
A	N 41.32.21 W 81.45.93	G	N 41.31.23 W 81.47.28
B	N 41.31.95 W 81.44.99	H	N 41.31.93 W 81.46.88
C	N 41.31.23 W 81.44.66	XS	N 41.29.76 W 81.44.17
D	N 41.30.52 W 81.45.01	XN	N 41.30.14 W 81.44.54
E	N 41.30.23 W 81.45.93	FINISH TETRAHEDRON	SET IN PLACE
All Distances = Nautical Miles Headings = Degrees Magnetic S to A-H= 1.0nm A to G = 1.4nm A to H = 0.7nm A to F = 1.8nm			

Class Flags			
0		5	
1		6	
2		7	
3		8	
4		9	