



U. S. Singlehanded, Doublehanded & Triplehanded Championships

For the Sears Cup, Bemis Trophy and Smythe Trophy

August 5-8, 2014

Organizing Authority: United States Sailing Association

Hosts: Traverse Area Community Sailing &
The Grand Traverse Yacht Club

Sponsors: Chubb Insurance Group, Gill NA,
Zim Sailing



Sailing Instructions

Final – 08/01

- 1 - **RULES** — The regatta will be governed by the rules as defined in The Racing Rules of Sailing (RRS). The following documents will also apply:
 - 1.1 - US Sailing Regulation 10 (<http://about.ussailing.org/Assets/Bylaws/US+Sailing+Regs.pdf>)
 - 1.2 - The Conditions for the United States Junior Sailing Championships (<http://www.ussailing.org/racing/championships/youth/juniorchamps/>)
 - 1.3 - The US Sailing Championship Support Vessel Policy (<http://www.ussailing.org/racing/championships/coaching-and-support-boat-policy/>)
 - 1.4 - In case of conflict between the Notice of Race (NOR) and these Sailing Instructions (SIs), the SIs will prevail. In the case of conflicts between these SIs and the Conditions, the Conditions will apply. This changes rule 63.7.
 - 1.5 - Appendix P – Special Procedures for Rule 42 of the rules – will apply to all competitors.
 - 1.6 - Rule 64.1 is changed to allow penalties imposed by the Protest Committee under rule 60.3 to range from a reprimand to a dismissal from the regatta.
- 2 - **RECALL NUMBERS** — Triplehanded boats will have bow numbers that will be affixed by the host club.
- 3 - **NOTICES TO COMPETITORS** - will be posted on the Official Regatta Notice Board in the foyer of GTYC. For the triplehanded division a second notice board will be located at the Elmwood Twp Marina (ETM) beginning on Tuesday, Aug 5th.
- 4 - **CHANGES TO SAILING INSTRUCTIONS** — will be posted no later than 20 minutes after the close of the morning briefing on the day it takes effect, except that any change to the schedule of races will be posted no later than the end of the protest time limit on the day before it will take effect or 1700 hrs the day before racing begins.
- 5 - **SIGNALS MADE ASHORE** —
 - 5.1 – Will be shown from the flagstaff in front of GTYC for the Single/Doublehanded divisions and from a flag hoist on a sailboat at ETM for the Triplehanded division.
 - 5.2 - When flag “AP” is displayed ashore, ‘1 minute’ is replaced with ‘not less than 40 minutes’ in Race Signal “AP”. This changes Race Signal “AP”.
- 6 - **SAFETY AND PERSONAL EQUIPMENT** —
 - 6.1 - Rule 40 is deleted and replaced with: “All competitors shall wear, while on the water, other than for brief periods while adding or removing clothing, an approved US Coast Guard Type III or Type V PFD that depends 100% on foam for flotation. The PFD must be worn outside all clothing, except that a thin shirt may be worn over the PFD to prevent snagging.” Note that code flag Y will not be displayed. This changes the preamble to Part 4 of the rules and rule 40.
 - 6.2 - Before the warning signal of the first race in which they intend to compete each day, boats shall check in by sailing by, slowly on starboard tack, the stern of their division’s RC signal boat. Each boat shall hail her recall or sail number until acknowledged by the signal boat. Boats failing to comply may be protested by the RC.



6.3 - A boat retiring from a race shall notify any RC boat, coach boat, or safety boat as soon as possible. No boat shall leave the racing area unless accompanied by an RC boat, coach boat or safety boat.

6.4 - The only gear, rigging, or equipment that a team may take aboard a boat shall be: a magnetic card compass, flags, plastic bucket or bailer, normally equipped ditty-bag, personal effects including PFDs and protective clothing. For the doublehanded fleet (using the C420), permission is granted to bring Fast-Pins with a retaining line, and the competitors are required to bring their own trapeze harnesses.

6.5 - Electronic fluxgate compasses and GPS devices of any and all varieties, styles and combinations are specifically banned.

6.6 - No alteration may be made to the as-supplied running or standing rigging of the boats.

7 - SPECIAL SIGNALS —

7.1 - The display of code flag “A” at the finish of any race means: “Racing has ended for the day and all competitors shall proceed to shore.”

7.2 - For the triplehanded division only, if code flag “T” is displayed with or before the warning signal, spinnakers shall not be flown during that race.

8 - BOAT ROTATION FOR TRIPLEHANDED DIVISION —

8.1 - The triplehanded division boat assignments will be changed each day of the regatta. A boat assignment sheet will be posted on the GTYC Official Notice Board each morning of racing by 0900.

8.2 - Teams will be assigned a spinnaker and it will rotate with the teams throughout the event.

9 - SCHEDULE -- ETM - Elmwood Township Marina — WBEC - West Bay Event Center

Day/Date	Time	Location	Event
Monday/4th	1200 - 1700	GTYC	Registration - Boat Assignments
	1700	GTYC	Dinner - Welcome Ceremony - Clinic
	1930	GTYC	Competitor pick-up by Hosts
Tuesday/5th	0800	GTYC	Breakfast - prep lunches
	0900	GTYC/ETM	Onshore Clinic
	1030	GTYC/ETM	Rig & Leave Dock/Onwater Clinic
	1300	ETM	Triplehanded Competitor Meeting
	1400	ETM	Triplehanded First Warning for Practice Race, Races to follow
	1600	GTYC	Practice Race for all fleets
	1800	GTYC	Dinner
	1930	GTYC	Competitor pick-up by Hosts
Wednesday/6th	0800	GTYC	Breakfast - prep lunches
	0900	GTYC	Singlehanded/Doublehanded Competitor Meeting
	1000	GTYC/ETM	First Warning Signal
	1800	GTYC	Dinner
	1930	GTYC	Competitor pick-up by Hosts
Thursday/7th	0800	GTYC	Breakfast - prep lunches
	1000	GTYC/ETM	First Warning Signal
	1800	WBEC	Dinner - College Night
	2100	WBEC	Competitor pick-up by Hosts
Friday/8th	0800	GTYC	Breakfast - prep lunches

1000	GTYC	First Warning Signal
1000	ETM	Reserve Day - Boat Inspection
1300	GTYC/ETM	No Warning past 1300 - Boat Inspection & Return
1700	GTYC	Awards Presentation
1730	GTYC	Transportation to Airport or pick-up by Hosts

10 - CLASS FLAGS — will be --

Singlehanded Division	Yellow Flag
Doublehanded Division	Green Flag
Triplehanded Division	Interlake Class Flag

11 - RACING AREAS — see Attachment A

- 11.1 - The single and doublehanded divisions will sail in an area near GTYC.
- 11.2 - The triplehanded division will sail in an area near Elmwood Twp Marina or in an area near the Maritime Academy Marina depending on the wind direction.

12 - THE COURSES — see Attachment B

- 12.1 - The diagrams show the courses, the course signals, the order in which marks are to be passed, and the side on which each mark is to be left.
- 12.2 - No later than the warning signal, the RC signal boat will display the course designation on a board.
- 12.3 - If a course has a gate, and one of the gate marks is missing, the remaining mark in position shall be rounded to port.

13 - MARKS —

- 13.1 - All marks will be red, orange, or yellow inflatable marks.
- 13.2 - Marks 1, 1a, 2, 3s, 3p, 4s, 4p and 5 are rounding marks.
- 13.3 - For the triplehanded course, if Mark 1 is changed, a new mark will be put in place, including Mark 1a, and the old one will be picked up as soon as possible.

14 - THE START —

- 14.1 - The starting line will be between a staff displaying an orange flag on an RC signal boat and the course side of an inflatable buoy.
- 14.2 - A boat starting later than 4 minutes after her starting signal will be scored DNS. This changes rules 63.1 and A5.

15 - THE FINISH — The finishing line will be between a staff displaying an orange flag on an RC boat and the course side of an inflatable buoy.

16 - PENALTY SYSTEM — RRS Appendix P – Special Procedures for Rule 42 – will apply.

17 - TIME LIMIT —

- 17.1 - The time limit for each race will be 90 minutes for the first boat to finish.
- 17.2 - Boats failing to finish within 15 minutes (the finishing window) after the first boat in its class sails the course and finishes will be scored Time Limit Expired (TLE). The points awarded for boats scored TLE will be the whole number (rounding 0.5 upward) equal to the number of boats starting the race minus 50% of the number of boats scored TLE. This changes rules 35, A4, A5 and A11.

18 - EVENT PROTESTS AND REQUESTS FOR REDRESS —

- 18.1 - A boat is not permitted to protest another boat for breaking SI 2, 5.2, 6.2, 6.3, 6.4, 21 or 22 or any class rule other than class equipment measurement rules. The penalty for breaking these instructions may be less than disqualification and is at the discretion of the Protest Committee. This changes rule 60.1(a).

- 18.2 - A boat which is intending to protest about an incident that occurs in the racing area shall notify the RC finish boat of her intention as soon as possible after finishing, including the identification number of the boat(s) she intends to protest, and obtain RC acknowledgement. This requirement is in addition to those of rule 61.1(a).
- 18.3 - Protest forms will be available at and shall be turned in to the protest desk at GTYC located in the Commodores Room off the foyer.
- 18.4 - The protest time limit is 60 minutes after the RC signal boat docks for the single/doublehanded divisions and 90 minutes after the RC signal boat docks for the triplehanded division. The protest time for each course will be posted on the respective Official Notice Board.
- 18.5 - A protest hearing schedule and the location of the hearings will be posted on the Official Notice Board at GTYC no later than 15 minutes after the protest time limit to inform competitors of hearings in which they are parties. The location of the hearings will be posted on the Official Notice Board as soon as practical. When all parties are available, hearings may commence before the protest time limit. This is the notice required by rule 63.2.
- 18.6 - Notice of protests by the race committee or by the protest committee will also be posted on the Official Notice Board at GTYC. This is the notice required by rule 63.2.
- 18.7 - Notice of actions taken by the RC or Protest Committee and a list of boats penalized under Appendix P will be posted on the Official Notice Board at GTYC.
- 18.8 - On the final day of the regatta, a request for reopening a hearing shall be delivered:
- Within the protest time limit if the party requesting the reopening was informed on the previous day.
 - Within the protest time limit or 30 minutes after the decision is announced, whichever is later. This changes RRS 66.

19 - SCORING —

- 19.1 - Three (3) races are required to be completed to constitute a series.
- 19.2 - When fewer than five (5) races have been completed, a boat's series score shall be the total of her race scores. This changes rule A2.
- 19.3 - When five (5) or more races have been completed, a boat's series score shall be the total of her race scores excluding her worst score. This changes rule A2.

20 - REPLACEMENT OF CREW OR EQUIPMENT — Substitution of competitors, or repair or replacement of hulls, sails, or equipment will not be allowed without prior written approval of the Organizing Authority and Protest Committee.

21 - DISPOSAL OF TRASH — Boats observed purposefully discharging trash into the water will either be disqualified from all races sailed on the day the infraction is observed or be subject to other suitable disciplinary action, or both at the discretion of the Protest Committee. Trash may be placed aboard support or race committee boats.

22 - COACHING AND OUTSIDE CONTACT — This is a Grade 2 Event as defined in the US Sailing Championship Support Vessel Policy. See (<http://www.ussailing.org/racing/championships/coaching-and-support-boat-policy/>).

- 22.1 - Except as provided in the Policy specified above, instructors, coaches and other support personnel and family members shall not go afloat in the defined racing area at any time during the clinic or racing days, except in spectator boats supplied by the regatta organizers.
- 22.2 - Outside contact with competitors is prohibited on clinic and racing days commencing with the competitor's arrival at the host club and shall continue until dismissed by the National Coach on clinic days, or released by the Protest Committee on racing days.
- 22.3 - Outside contact is defined as a parent, family member, spectator, or coach. Competitors shall not receive advice, instruction, or any type of outside assistance (other than that provided by US Sailing) including electronic communication devices while at the sailing venue during the clinic and racing days. It is the intent of this rule to prohibit contact between competitors and any person, who, in the opinion of the Protest Committee, is a coach, instructor or advisor.



22.4 - The coaches provided by US Sailing will offer individual on-the-water instruction and group commentary/advice on land following each racing day. This coaching will be given to all competitors on an as equal basis as possible.

23 - DISCIPLINE —

23.1 - Sailors are considered to be at the Championship from the time they arrive until such time as they leave the venue for home or the airport.

23.2 - For Junior and Youth events or for junior or youth competitors in any US Sailing championship, no participant or competitor shall use, either on or off the water: marijuana or any other controlled substance (as defined in 21 U.S. Code 802) the possession of which is unlawful under 21 U.S. Code 841, or alcoholic beverages (distilled spirits, wine and beer, each described in chapter 51 of the U.S. Internal Revenue Code and intended for beverage use).

23.3 - An alleged breach of SI 23.1 or 23.2 will not be grounds for a protest. However, when the protest committee believes that a competitor may have breached one of these regulations, it shall follow the process described in racing rule 69.1, and a competitor found to have breached one of these regulations shall be excluded from the remaining races of the series and, where practicable, be removed from the regatta venue and sent home. The competitor's boat will be disqualified from all races of the series.

24 - PRIZES —

24.1 - US Sailing Championship medals will be awarded to competitors finishing in the top 3 positions.

24.2 - The following trophies will be presented:

- a) Singlehanded: — The Smythe Trophy is the perpetual trophy presented to the winner.
- b) Doublehanded — The F. Gregg Bemis Trophy is the perpetual trophy presented to the winning team.
- c) Triplehanded: — The Sears Cup is the perpetual trophy presented to the winning team. The Judges Trophy will be presented to the second place team.

24.3 - Sportsmanship Awards will be presented as follows:

- a) Singlehanded — The Faye Bennett Sportsmanship Award
- b) Doublehanded — The Bemis Sportsmanship Award
- c) Triplehanded — The Cox Sportsmanship Award

24.4 - The Seamanship Trophy will be awarded to the triplehanded team that receives the greatest number of points for neatness and general ship-shape condition of their boats per USJRSC Condition 7.

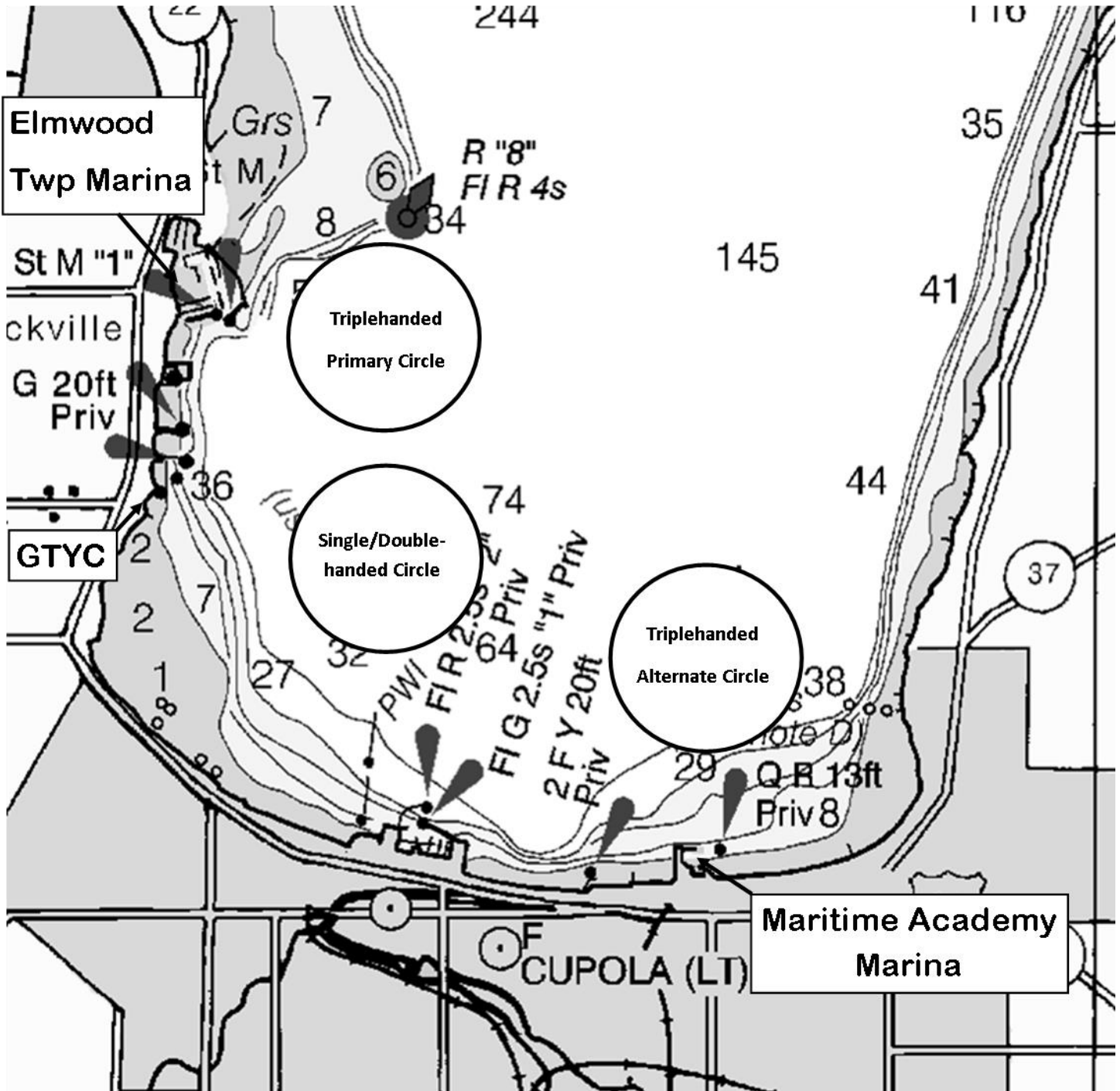
24.5 - Additional honors – Top 4 Youth Champs eligible sailors (2 skippers/2 crew) finishing in the top 20% of the fleet provided they meet the conditions and application requirements outlined in the Notice of Race for the 2015 U.S. Youth Sailing Championship will be awarded early acceptance in a doublehanded boat of their choice.

Top 2 Youth Champs eligible sailors not already qualified and finishing in the top 30% of the fleet provided they meet the conditions and application requirements outlined in the Notice of Race for the 2015 U.S. Youth Sailing Championship in a singlehanded boat of their choice

25—DISCLAIMER OF LIABILITY — Competitors participate in the regatta entirely at their own risk (see rule 4, Decision to Race). The Organizing Authority and the Host Club shall not accept any liability for material damage or personal injury or death sustained in conjunction with or prior to, during, or after the regatta.



Attachment A

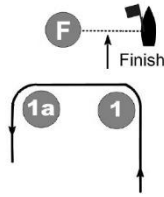


Attachment B – COURSES

Course:

W3

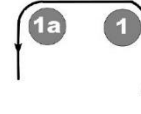
Start-1-1A-
4S/4P-Finish



Course:

L4

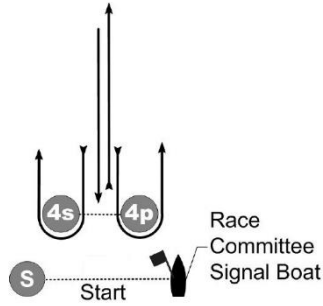
Start-1-1A-
4S/4P-1-1A-
Finish



Course:

W5

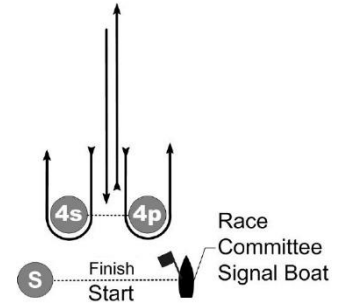
Start-1-1A-
4S/4P-1-1A-
4S/4P-Finish



Course:

L6

Start-1-1A-
4S/4P-1-1A-
4S/4P-1-1A-
Finish



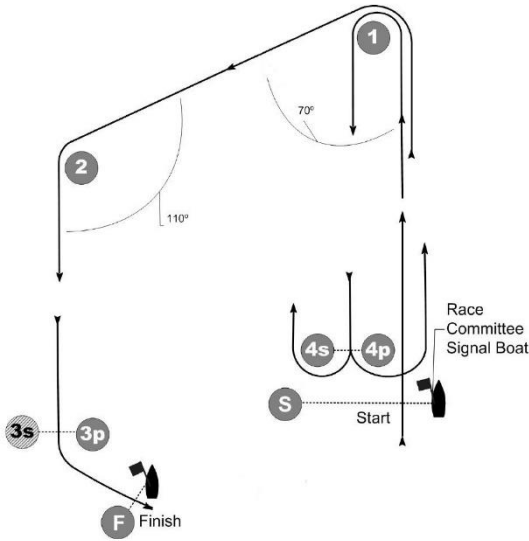
Inner Trapezoid

Outer Trapezoid

Course:

I

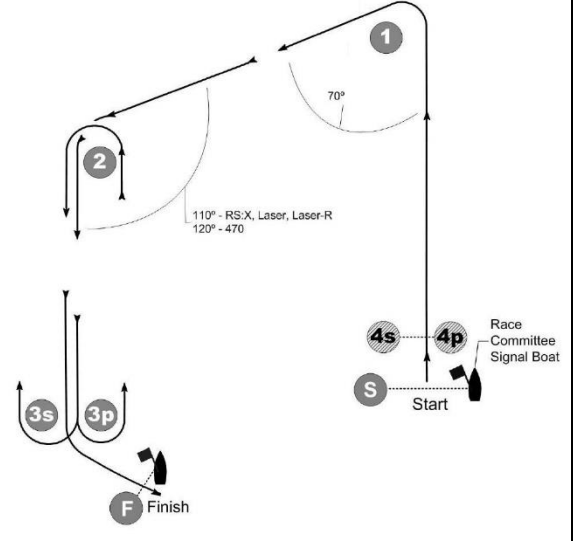
Start-1-
4S/4P-
1-2-
3P-
Finish



Course:

O

Start-1-2-
3S/3P-2-
3P-Finish



Inner Trapezoid, windward finish

Outer Trapezoid, windward finish

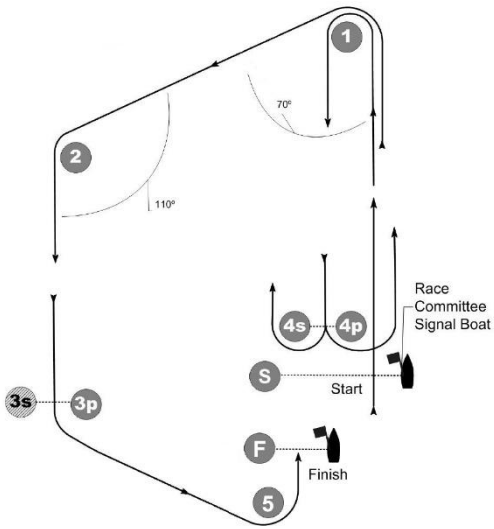


CHUBB U.S. JUNIOR CHAMPIONSHIPS

Course:

IW

Start-1-
4S/4P-1-
2-3P-5-
Finish



Course:

OW

Start-1-2-
3S/3P-2-
3P-5-
Finish

