

SAILING INSTRUCTIONS

Wednesday Night Offshore Series

May 21, 2014 through September 24, 2014

Milwaukee Yacht Club

Milwaukee, Wisconsin, United States of America

ORGANIZING AUTHORITY

The Milwaukee Yacht Club Fleet & Regatta Committee in conjunction with the Race Committee (RC) shall represent the Milwaukee Yacht Club (MYC) as the Organizing Authority for the Wednesday Night Offshore Series (WNOS).

1 RULES

- 1.1 The WNOS will be governed by the rules as defined in *The Racing Rules of Sailing* (RRS), except as any of these are changed by the Notice of Race or the Sailing Instructions.
- 1.2 The following Racing Rules will be changed as follows:
 - Rule 29.2: WNOS sections under General Recall will have their second start after all other sections have had one chance to start first.
 - Rules 44.1, 60, 61, 62, 63, 64, 65: Appendix T, sections A, B, and D will apply.
 - Rule 75.1: To enter the WNOS, a boat shall comply with the requirements of the organizing authority of the race: The boat owner shall be a member of Milwaukee Yacht Club, South Shore Yacht Club, Milwaukee Community Sailing Center (MCSC), MAST, McBoat or US SAILING.

2 NOTICES TO COMPETITORS

- 2.1 Notices to competitors will be posted on the official notice board located at the MYC adjacent to the Main Clubhouse front entrance.

3 CHANGES TO SAILING INSTRUCTIONS

- 3.1 Any change to the sailing instructions will be posted on the official notice board before 1200 on the day it will take effect, except that any change to the schedule of races will be posted by 1900 on the day before it will take effect.

8 COURSES

- 8.1 Typical courses will be windward-leeward and triangle. Appendix D shows the diagrams of courses available to RC which includes the approximate angles between legs, the order in which marks are to be rounded or passed, and the side on which each mark is to be left. The approximate leg length will be between $\frac{1}{2}$ and 2 nautical miles.
- 8.2 No later than the preparatory signal, the RC Signal Boat will display the approximate compass bearing of the first leg.
- 8.3 Courses may be shortened according to RRS 32. Additionally, the RC may elect to shorten course by one leg prior to the start. If a course is to be shortened prior to the start the RC will display flag S (white square with small blue square) no later than the preparatory signal for that race and the duration of the starting sequence.

9 MARKS

Marks are throw-in buoys, either orange or yellow, cylinders or round buoys or tetrahedrons, with or without a short spar.

- 9.1 Rounding marks will be orange tetrahedrons, orange cylinders, or orange round buoys.
- 9.2 New marks, as provided in instruction 12.1, will be yellow tetrahedrons or orange tetrahedrons with a black strap.
- 9.3 The starting marks will be the MYC Center Mark at the port end and the RC boat at the starboard end. The finishing marks will be the RC boat at the starboard end and a buoy at the port end.
- 9.4 A race committee boat signaling a change of a leg of the course is a mark as provided in instruction 12.2.

10 THE START

- 10.1 Races will be started by using Rule 26 with the warning signal for each succeeding class made with or after the starting signal of the preceding class.
- 10.2 The starting line will be between a staff or halyard displaying and orange square flag on the RC Signal Boat at the starboard end and the MYC Center Mark on the port end (unless RC moves the course to the east.) The starting For the Soling fleet the starting line will be between a buoy at the port end and the staff or halyard displaying and orange square flag on the RC Signal Boat at the starboard end. In the event that the starting buoy at the port end for the Soling fleet cannot be set, the starting line for the Soling fleet will be between a staff or halyard displaying and

The finishing line will be between a staff or halyard displaying an orange flag on a RC boat at the starboard end and a buoy on the port end.

13 PENALTY SYSTEM

- 13.1 The Scoring Penalty, Rule 44.1(a), will apply to the Soling and J-24 sections. Rule 44.1(b) will apply to all sections.
- 13.2 The Scoring Penalty, rule 44.2, will apply for the Soling and J-24 sections. The Scoring Penalty, rule 44.3, will apply for the PHRF and JAM (PHRF) sections. The penalty shall be the score the boat would have received without the penalty made worse by 1 place. The one-turn and two-turn penalties are not in effect for PHRF and JAM (PHRF) boats.

14 TIME LIMITS

Any race in which no one design boat rounds the first windward mark within 45 minutes of their start or finishes within 1.5 hours of the start will be abandoned by RC. If any boat finished within the 1.5 hour limit, the time limit for all other racing boats will be 30 minutes after the finish of the first boat. For PHRF sections, it is the above time limits plus the boat's time allowance. This changes RRS 35. One design boats only may be finished in place. PHRF boats not finishing within the time limit will be scored "Did Not Finish" (DNF).

15 PROTESTS AND REQUEST FOR REDRESS

- 15.1 Protest forms are available near the MYC main office. Additionally, they can be found on our website www.milwaukeeeyc.com-> Sail Fleets.
- 15.2 For each section, the protest time limit is 30 minutes after the MYC Signal Boat (usually Manke) docks at MYC. This changes Rules 61.3 and 62.2.
- 15.3 An individual from the Protest Committee or the Race Committee Director will attempt to verbally notify the parties involved in a protest of the time and place of their arbitration and/or protest hearing. Notices will be posted no later than 15 minutes after the protest time limit to inform competitors of hearings in which they are parties or named as witnesses.

16 SCORING

- 19.2 RC will use VHF radio channel 72 for general announcements and comments. RC will attempt to announce the starting time, starting sequence, course type, and course directions twice prior to the first warning signal.

20 PRIZES

Awards shall be presented at the MYC Annual Awards Banquet for the Spring Series, Summer Series, and Overall Season Series. Please see the NOR for further information.

For the Soling section only, the Thunder Trophy will be awarded to the boat finishing first in the Spring Series. The Shadow Trophy will be awarded to the boat finishing first in the Summer Series. The Kotovic Trophy will be awarded to the boat finishing first in the Overall Season Series. The Crew Championship Trophy will be awarded to the Crew steering the first place Soling on one or multiple Wednesday nights as determined solely by the Soling fleet.

21 DISCLAIMER OF LIABILITY

Competitors participate in the WNOS entirely at their own risk. See RRS 4, Decision to Race. The organizing authority will not accept any liability for material damage or personal injury or death sustained in conjunction with or prior to, during, or after a race in the series. All boat owners/responsible parties will submit a completed waiver of liability to the MYC main office prior to racing. Waivers are available through the online registration system as well as near the MYC main office.

22 INSURANCE

Each participating boat shall be insured with valid third-party liability insurance with minimum coverage of \$300,000.

23 FURTHER INFORMATION

All race documents will be available near the Main Office as well as on the MYC website, www.milwaukeeeyc.com -> Sail Fleets.

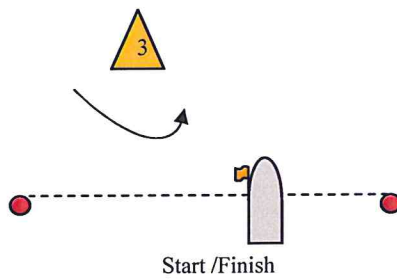
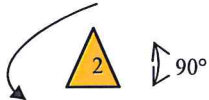
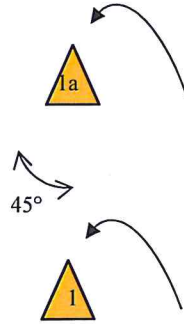
For further information, contact:

Milwaukee Yacht Club
Pam Sohn, Office Manager
Todd Giese, MYC General Manager
info@milwaukeeeyc.com
414.271.4455

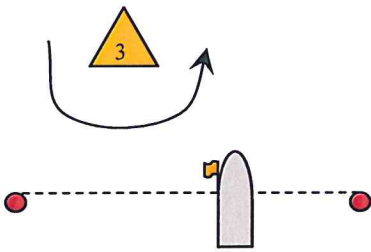
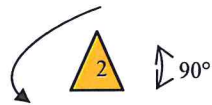
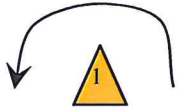
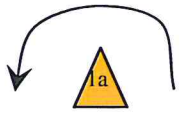
Paul McGuan, 2014 MYC Race Committee Director
paul@mcguan.com
414.258.9244

Prepared by Paul McGuan, May 20, 2014

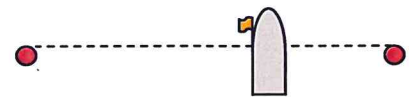
- Appendix D COURSES Page 2



Course O:
Start, 1(or 1a), 2, 3, 1(or 1a) Finish



Start / Finish



Start / Finish

Course W:
Start, 1(or 1a), 3, 1(or 1a)
Finish

Course T1:
Start, 1a, 2 Finish