



# 2014 Columbia Gorge One-Design Regatta

August 1, 2 & 3, 2014

Fireball U.S. National Championship

Organizing Authority is the Columbia Gorge Racing Association (CGRA)  
Cascade Locks, Oregon

## NOTICE OF RACE

### 1. RULES

- 1.1. The regatta will be governed by the rules as defined in *The Racing Rules of Sailing* and the rules of the participating class associations.
- 1.2. The US Sailing prescriptions to rules 60, 63.2 and 63.4 are deleted.
- 1.3. Racing Rule 40 is changed as follows: Competitors shall wear personal flotation devices, except briefly while changing or adjusting clothing or personal equipment. Wet suits and dry suits are not personal flotation devices (code flag Y need not be displayed).

### 2. ADVERTISING

- 2.1. Competitor advertising shall be restricted to the current ISAF Regulation 20, Advertising Code.
- 2.2. Boats may be required to display advertising and/or bow numbers chosen and supplied by the organizing authority.

### 3. ELIGIBILITY & ENTRY

- 3.1. The regatta is open to Fireballs and other one design dinghy and keel boat classes that have at least five boats registered on or before July 1, 2014.
- 3.2. Sport boat classes (i.e., keel boats of planning hull design) of less than five boats are invited to compete using a handicap scoring system by prior arrangement with CGRA, providing that at least five boats are registered prior to July 1, 2014.
- 3.3. Eligible competitors may enter by completing the online registration form and fee payment found on the CGRA website [www.cgra.org](http://www.cgra.org).
- 3.4. All participants (or their parent/guardian if under age 18) will be required to agree to a waiver of liability as a condition of eligibility. This waiver may be completed either during online registration or at the event check-in.
- 3.5. All competitors are required to check in at the race office prior to the competitors' meeting on the morning of the first race for their class.

### 4. CLASSIFICATION

- 4.1. This event is open to sailors of all classifications as described in ISAF Regulation 22, Sailor Classification Code.

**5. FEES**

	by July 1	after July 1	includes
Single Handed (Laser, Moth, Hoot)	\$85.00	\$105.00	1 regatta souvenir and 1 dinner ticket
Double Handed (Tasar, FD, etc.)	\$105.00	\$125.00	2 regatta souvenirs and 2 dinner tickets
Fireball (3 days)	\$125.00	\$150.00	2 regatta souvenirs and 2 dinner tickets
Viper 640	\$125.00	\$150.00	3 regatta souvenirs and 3 dinner tickets
Melges 24, Moore 24	\$160.00	\$185.00	4 regatta souvenirs and 4 dinner tickets

- 5.1. Additional dinner tickets may be purchased at registration for \$20.00 each.
- 5.2. CGRA Members (Intermediate or Pro) are eligible for a discount of \$5.00.
- 5.3. Entry fees include berthing, regatta souvenir, post-racing refreshments, and dinner tickets for skippers and crews of all registered boats.

**6. SCHEDULE**

Friday, August 1 (Only for Fireball and other classes racing 3 days)	8:30-10:30 am 10:30 am Noon	Check-in at CGRA Race Office Competitors Meeting First Race Warning
Saturday, August 2 (all classes)	8:30-10:30 am 10:30 am Noon 6:00 pm	Check-in at CGRA Race Office Competitors Meeting First Race Warning Regatta Barbeque in the Park
Sunday, August 3	11:00 am 3:00 pm	First Race Warning No warning signal after this time Awards presentation to follow last race

**7. INSPECTION & MEASUREMENT**

- 7.1. All boats shall comply with the current rules and specifications of their respective class associations. Spot checks may be performed on any boat by the race committee or judges at any time during the event.

**8. SAILING INSTRUCTIONS**

- 8.1. The Sailing Instructions will be available at event check-in on Friday, August 1.

**9. VENUE**

- 9.1. The Columbia River adjacent to Cascade Locks Marine Park (see Attachment A). NOTE: There are no launching facilities other than the Marine Park boat ramp and the beach launching area at the east end of the Marine Park.

**10. COURSES**

- 10.1. The courses will be around buoys set by the race committee as described in the Sailing Instructions.

**11. SCORING**

- 11.1. The Low Point Scoring System (Appendix A) shall be used.
- 11.2. When fewer than 5 races have been completed, a boat's series score will be the total of her race scores. When 5-9 races have been completed, a boat's series score will be the total of her

race scores excluding her worst score. When 10 or more races have been completed, a boat's series score will be the total of her race scores excluding her two worst scores.

11.3. The race committee will attempt to complete as many races as conditions allow. A minimum of three completed races are required to constitute a series.

## **12. SUPPORT BOATS**

12.1. Support and coach boats must register at the Race Office during the check-in period. During racing, support boats shall monitor the race committee VHF channel and remain more than 50 yards from the course area, except when asked to assist by the race committee.

12.2. Support and coach boats shall berth at the public dock in the Cascade Locks Marine Park Marina.

## **13. BERTHING**

13.1. Boats shall be kept in the designated areas of the beach and parking lot at the east end of the Cascade Locks Marine Park. Specific berths may be assigned at check-in.

## **14. RADIO COMMUNICATION**

14.1. Except in an emergency, a boat shall neither make radio transmissions while racing nor receive radio communications not available to all boats. This restriction also applies to mobile telephones.

## **15. PRIZES**

15.1. Prizes will be given to the top 3 finishers in each fleet.

15.2. Additional prizes may be awarded by the class associations.

## **16. SAFETY**

16.1. Boats shall not impede the passage of commercial vessels and shall comply with the [U.S. Inland Navigation Rules Act of 1980](#). Boats that fail to comply promptly with signals from a committee boat to alter course, or that receive a 5-blast warning (5 short sounds) from a commercial vessel, will be subject to protest and possible disqualification.

## **17. RISK, DISCLAIMER OF LIABILITY, & PERSONAL CONDUCT**

17.1. Competitors participate in the regatta at their own risk. See Rule 4 (Decision to Race). The organizing authority will not accept any liability for material damage or personal injury or death sustained in conjunction with or prior to, during, or after the regatta.

17.2. Competitors will accept full responsibility for all their actions during any activity related to this event. This includes on-shore activities before, during, and after the regatta.

17.3. Competitors are expected to abide by the Marine Park Rules as stated in Attachment C.

## **18. INSURANCE**

18.1. Each participating boat shall be insured with valid third party liability insurance with a minimum cover of \$500,000 per event or the equivalent. Competitors shall be prepared to supply proof of insurance on request.

## **19. RIGHT TO USE NAME & LIKENESS**

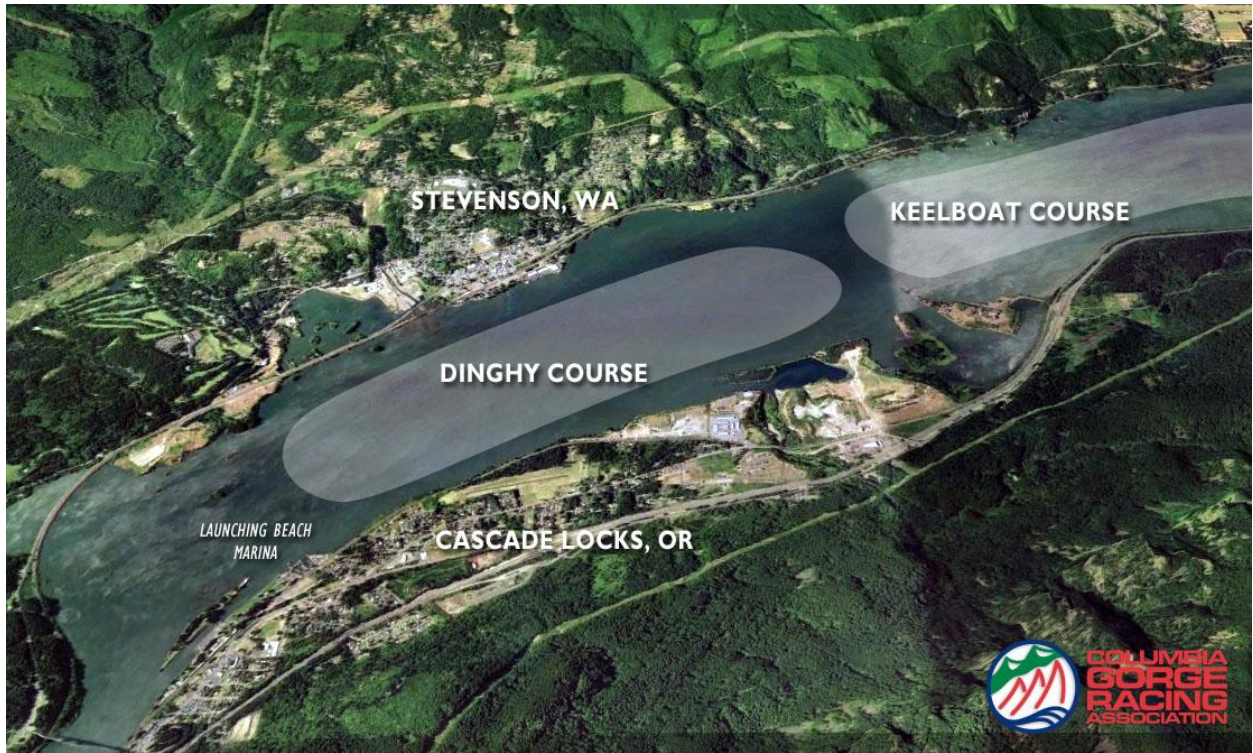
19.1. By participating in this event, all competitors automatically grant the organizers and sponsors the right to make, use and show, at any time and at their discretion, any photographs or videos of him or her produced during the period of the event without compensation.

## **20. FURTHER INFORMATION**

20.1. Additional useful information regarding accommodations, travel, boat charters and area recreation is available online at [www.cgra.org](http://www.cgra.org).

20.2. For more information, please contact Event Manager Susan Winner at [susan@cgra.org](mailto:susan@cgra.org).

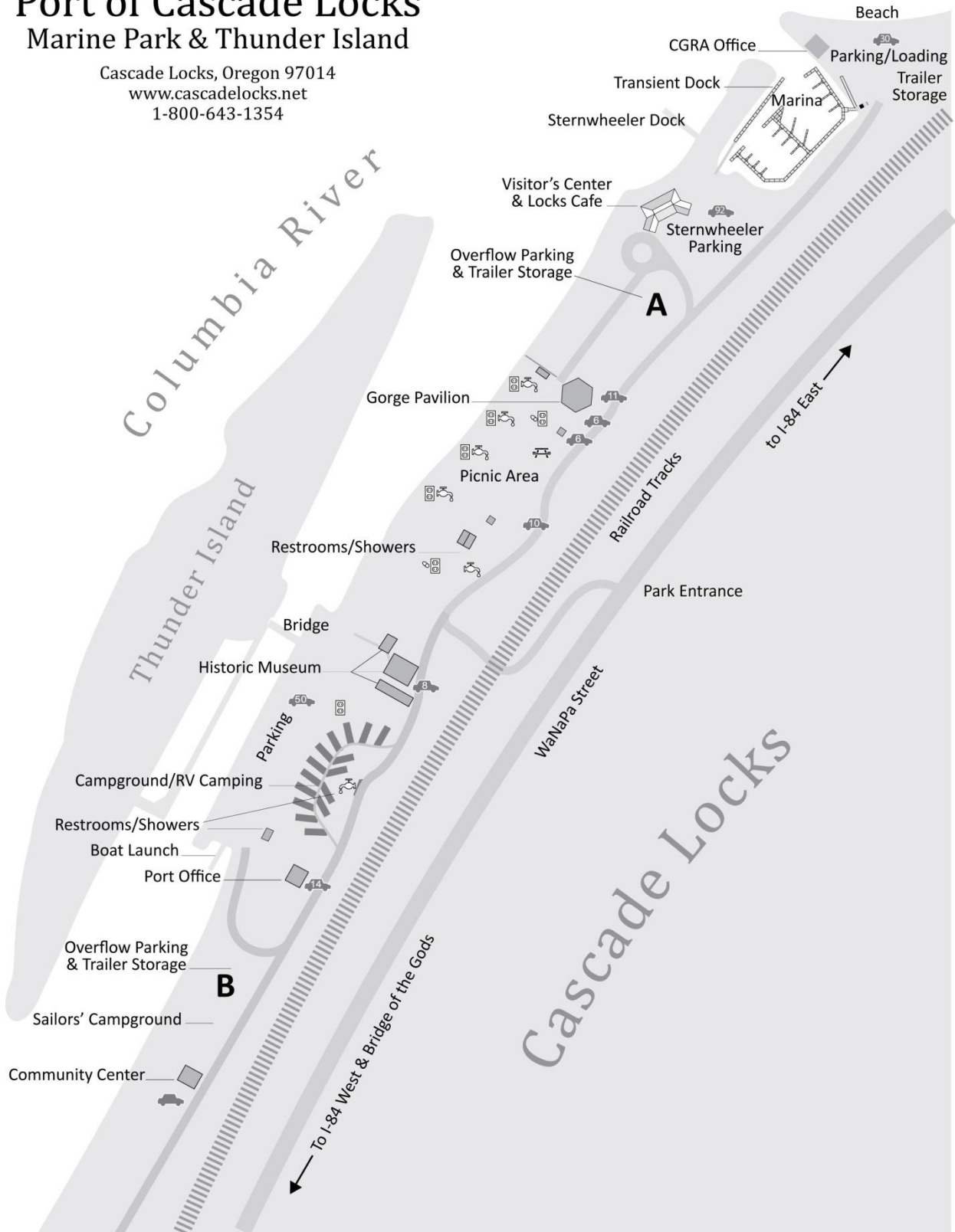
## Attachment A: Racing Area



### Attachment B: Marine Park Map

# Port of Cascade Locks Marine Park & Thunder Island

Cascade Locks, Oregon 97014  
www.cascadelocks.net  
1-800-643-1354





## **Attachment C: Marine Park Rules & Guidelines**

Welcome to Cascade Locks Marine Park. This is a public facility that CGRA shares with other visitors, so please be courteous and respectful to other park and beach users. Also, please obey all posted signs and regulations. By following these guidelines you will help to ensure that we may continue to hold regattas at the Marine Park.

### **Parking**

- Park only in designated (striped) parking spots in the beach parking lot.
- Do not park in spaces marked for marina patrons.
- Do not park in the area marked for boat trailers.
- Do not park in the parking lot adjacent to the Visitor Center. This is exclusively for use by patrons of the Sternwheeler Cruises.
- Do not block aisles or access ways with cars, boats, trailers or gear.
- RVs and campers are not allowed to park in the beach parking without a special permit.
- Parking is also available along the south side of the road leading to the beach.
- Overflow parking will be available in either area A or B (see map) if beach parking lot is full. Please see the race management office or notice board.

### **Trailer Parking**

- Trailers must be parked in the designated area only.
- Trailers may not be left in automobile parking spaces.
- Overflow trailer parking will be available if trailer area is full. Please see the race management office or notice board.
- Boats may be left in the moorage pen only with the permission of the CGRA facilities manager. See the regatta office for more information.

### **Camping**

- On most weekends camping is available at the Marine Park. Please check in with camp host regarding current campground pricing and to get a camping spot.
- Reservations are accepted for campground only.
- Overflow camping area is for sailing events only (no reservations).
- Camping must be in designated areas only. No camping in parking lots or beach area.
- No campfires are allowed.
- Showers/restrooms are open to public. Restrooms are located in three areas:
  - Boat Launch area
  - Marine Park (middle)
  - Campground (with showers)
- Payphone is available at the Visitor Center.
- Trash receptacles are provided for garbage.

### **Miscellaneous**

- Please keep personal gear and boat equipment together, out of the way and safe at all times. CGRA and the Port of Cascade Locks are not responsible for lost or stolen items.
- Pick up all trash.
- Do not prop open the gate to the Marina.
- Park hours: No person shall remain in the Port Marine Park between the hours of 10 pm- and ½ hour before sunrise unless the person is a camper in an authorized Port campsite.
- Unauthorized vehicles, trailers, or boats left unattended are left at their own risk and may be subject to towing and/or a fine.