

Hospice Cup XXXIII

Eastport Yacht Club

September 20, 2014



GENERAL SAILING INSTRUCTIONS

Including Amendment #1 and Amendment #2

1 RULES

The race will be governed by the rules as defined in *The Racing Rules of Sailing* (RRS), except as changed by the Notice of Race and/or Sailing Instructions (SIs). The rules in the SIs shall take precedence in the event of a conflict. This changes RRS 63.7.

2 NOTICES TO COMPETITORS

Notices to competitors will be posted on the Official Notice Board located on the waterside at Eastport Yacht Club (EYC).

3 CHANGES TO THE SAILING INSTRUCTIONS

Any change to the SIs will be posted before 0900 hours on the day of the race, except that any change to the schedule of races will be posted by 2000 hours the day before it will take effect.

4 SIGNALS MADE ASHORE

4.1 Signals made ashore will be displayed from the EYC flagpole.

4.2 When flag AP is displayed ashore, "1 minute" is replaced with "not less than 60 minutes in the race signal AP." This changes RRS Race Signals.

5 SCHEDULE OF RACES

5.1 For the **PHRF & CRUISING ONE DESIGN** classes, refer to Attachment A.

5.2 For the **HARBOR 20** class, refer to Attachment B.

5.3 For the **HOSPICE** class, refer to Attachment C.

6 RACING AREAS

The racing area will be in the mouth of the Severn River and the Chesapeake Bay, off Annapolis.

7 THE COURSE

7.1 For the **PHRF & CRUISING ONE DESIGN** classes, refer to Attachment A.

7.2 For the **HARBOR 20** class, refer to Attachment B.

7.3 For the **HOSPICE** class, refer to Attachment C.

8 MARKS

8.1 For the **PHRF & CRUISING ONE DESIGN** classes, refer to Attachment A.

8.2 For the **HARBOR 20** class, refer to Attachment B.

8.3 For the **HOSPICE** class, refer to Attachment C.

9 THE START

- 9.1 For the **PHRF & CRUISING ONE DESIGN** classes, refer to Attachment A.
- 9.2 For the **HARBOR 20** class, refer to Attachment B.
- 9.3 For the **HOSPICE** class, refer to Attachment C.

10 THE FINISH

- 10.1 For the **PHRF & CRUISING ONE DESIGN** classes, refer to Attachment A.
- 10.2 For the **HARBOR 20** class, refer to Attachment B.
- 10.3 For the **HOSPICE** class, refer to Attachment C.

11 TIME LIMIT

- 11.1 For the **PHRF & CRUISING ONE DESIGN** classes, refer to Attachment A.
- 11.2 For the **HARBOR 20** class, refer to Attachment B.
- 11.3 For the **HOSPICE** class, refer to Attachment C.

12 PENALTY SYSTEM

For the **CRUISING ONE DESIGN** and **HARBOR 20** classes only, RRS 44.1 is changed so that when a rule of Part 2 is broken outside the zone at a mark, the Two-Turn Penalty is replaced by the One-Turn Penalty. This changes RRS 44.1.

13 PROTESTS AND REQUESTS FOR REDRESS

- 13.1 Protest forms are available at EYC. Protests shall be delivered to EYC within the protest time limit.
- 13.2 Boats intending to protest must so notify the race committee when they finish, or via VHF if and when they leave the racecourse without finishing. This changes RR 61.
- 13.3 For each class, the protest time limit is sixty (60) minutes after the race committee signal boat docks. Notices of protests by the race committee or protest committee will be posted to inform boats under RRS 61.1(b).
- 13.4 Notices will be posted within thirty (30) minutes after the protest time limit to inform competitors of hearings in which they are parties or named as witnesses. Hearings will be held at EYC beginning approximately thirty (30) minutes after the protest time limit.

14 SCORING

- 14.1 For the **PHRF & CRUISING ONE DESIGN** classes, refer to Attachment A.
- 14.2 For the **HARBOR 20** class, refer to Attachment B.
- 14.3 For the **HOSPICE** class, refer to Attachment C.

15 SAFETY REGULATIONS

- 15.1 Boats shall check in with the race committee boat prior to their start by hail of their sail number (or name if no sail number) and receipt of a reply of that information by the race committee.
- 15.2 All boats shall carry a VHF radio capable of communicating on VHF channels 9, 13, 16 and the appropriate class courtesy channel (identified in Attachments A, B, and C).
- 15.3 A boat that retires from a race, or leaves the racing area between races, shall notify the race committee at the first reasonable opportunity.
- 15.4 Penalties for breaking SIs 15.1, 15.2, 15.3, or RRS 55 may be less than disqualification if the protest committee so decides.

16 RADIO COMMUNICATIONS

- 16.1 Boats are encouraged to make contact with commercial traffic on VHF channel 13, as required for safety.
- 16.2 For the **PHRF & CRUISING ONE DESIGN** classes, refer to Attachment A.
- 16.3 For the **HARBOR 20** class, refer to Attachment B.
- 16.4 For the **HOSPICE** class, refer to Attachment C.

17 COMMERCIAL TRAFFIC

- 17.1 A boat may not exercise right of way, cross in proximity to, or interfere with reasonable transit of the race area by commercial freighters, tugs and tows or other commercial vessels that are unable to respond readily. A boat protested under this rule has the burden of proof that she complied with this rule. Boats shall take evasive action well in advance of any potentially dangerous situation. The U.S. Coast Guard, ship captains, and bay pilots have been encouraged to report any incident they observe.
- 17.2 The race committee or protest committee may protest under SI 17.1, based on information received from any source. There is no time limit for protests filed under SI 17.1. This changes RRS 60.2, RRS 60.3, and RRS 61.3.
- 17.3 RRS 42.3 (Propulsion - Exceptions) is changed by adding: “(j) A boat that is unavoidably without way in a ship channel may use any means of propulsion to clear the channel at the approach of commercial traffic provided that, when becoming clear of the commercial traffic, the boat has not improved their position as a result of this action. A boat claiming this exception shall report the incident in writing to the protest committee within the protest time limit, with all the facts necessary to substantiate the boat’s speed and change of position during the incident.”
- 17.4 RRS 62.1 (Redress) is changed by adding: “(e) clearing a ship channel in compliance with SI 17.3.”

18 DISCLAIMER OF LIABILITY

Competitors participate in the regatta entirely at their own risk; refer to RRS 4. The organizing authority will not accept any liability for material damage or personal injury or death sustained in conjunction with or prior to, during, or after the event.

19 INSURANCE

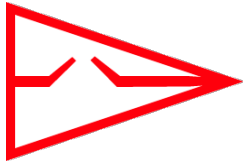
Each participating boat shall be insured with valid third-party liability insurance with a minimum coverage of \$300,000 (US) per incident, or the equivalent.

20 SOCIAL

A party at the Bert Jabin Yacht Yard, will be held on Saturday, September 20, 1700-2100. The party offers live music with the Doug Segree Band, silent and live auctions, and a buffet from Mission BBQ. Come join the fun and help Hospice Cup raise funds for hospice programs. Details can be found at www.hospicecup.org.

21 CHARITY

Hospice Cup is a charity event. Proceeds are donated to Hospice Cup, Inc., to benefit hospices in Virginia and Maryland. For information about making a tax-deductible donation, with guest privileges, or to learn about Hospice Cup, Inc., see www.hospicecup.org.



Hospice Cup XXXIII

Eastport Yacht Club

September 20, 2014



ATTACHMENT A

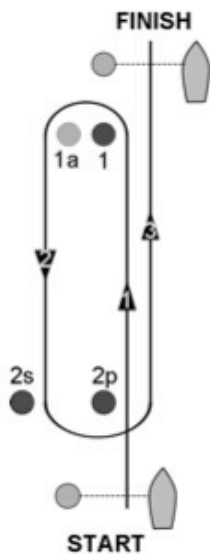
For the PHRF & CRUISING ONE DESIGN Classes

1 SCHEDULE OF RACES

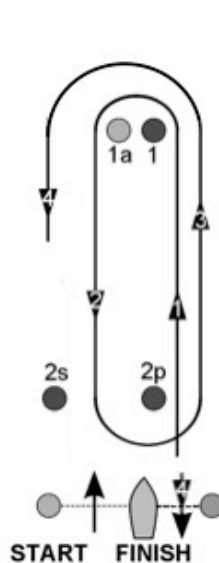
- 1.1 Number of races: up to three (3) races may be run.
- 1.2 Competitors shall rendezvous at 1000 hours in the vicinity of **CBYRA "X"** (R2, Fl 2.5s). The racing area is shown in Figure A1.
- 1.3 The scheduled time of the warning signal is 1100 hours.
- 1.4 No warning signal will be made after 1430 hours.
- 1.5 All PHRF and one-design racers will display from the backstay their class flag as specified in paragraph 4 of the CBYRA Green Book General Sailing Instructions. The J/70 class is not required to display a class flag. Competitors in the Alerion 28 Express class will display the Alerion class flag from the backstay.

2 THE COURSE

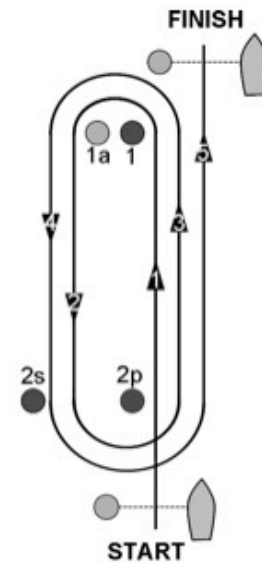
- 2.1 The courses will be windward-leeward. Marks shall be rounded and the finish line crossed in the order presented in the description below each course diagram.



Course 3
Start, 1, 1a, 2s/2p, Finish



Course 4
Start, 1, 1a, 2s/2p, 1, 1a, Finish



Course 5
Start, 1, 1a, 2s/2p, 1, 1a, 2s/2p, Finish

- 2.2 No later than the warning signal, the course to be sailed, approximate heading, and distance to the first mark will be designated by placards displayed on the side of the Signal Boat that is opposite the start line.
- 2.3 Rounding marks shall be passed to port. If a leeward gate is placed, boats shall pass between the marks.

3 MARKS

- 3.1 Start/Finish and Offset marks will be lime-green cylinders. All other marks will be orange cylinders displaying the letters "AYC."
- 3.2 The first change mark shall be an orange cylinder with a dark colored band. Subsequent change mark will revert to the previous type of mark.

4 THE START

- 4.1 The start line will be between a staff displaying an orange flag on a Race Committee Signal Boat on the starboard-end and a lime-green cylinder on the port-end.
- 4.2 The Starting Area is defined as extending 100 yards beyond each end of the starting line and 100 yards behind the starting line and its extensions. Boats shall keep clear of the Starting Area and the first leg of the course until the Signal Boat has hoisted its Class Flag.
- 4.3 The start order for the first race will be as defined immediately below. Subsequent starts may be in a different order so as to maximize racing for all classes.
 - J/105
 - PHRF A2 / B
 - J/70
 - PHRF C / Alerion 28
 - PHRF N

5 THE FINISH

The finish line will be between a staff displaying a blue flag on a Race Committee boat on the starboard-end and a lime-green cylinder on the port-end.

6 TIME LIMIT

The time limit for each race shall be three (3) hours. Boats not finishing within one (1) hour of the first boat in their class to finish will be scored TLE. This changes RR 35.

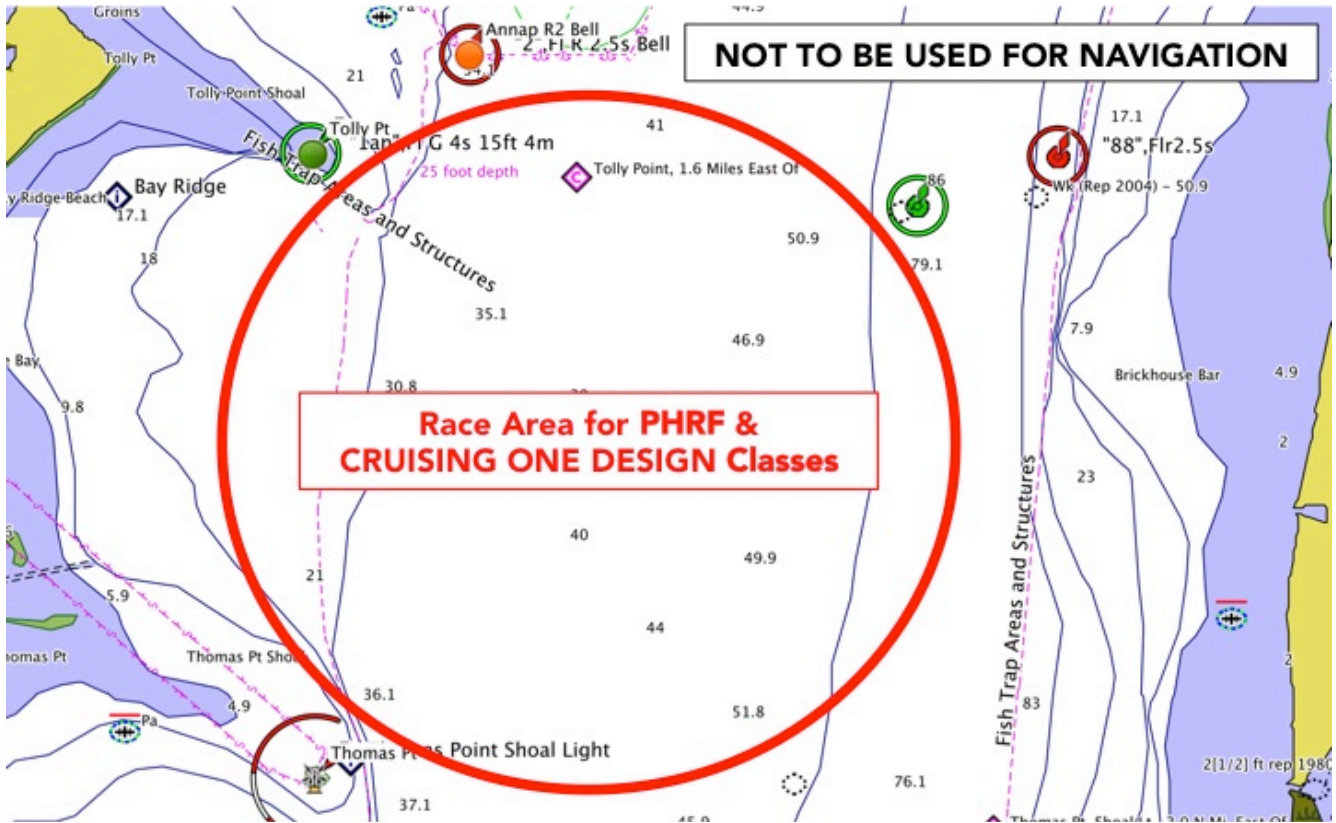
7 SCORING

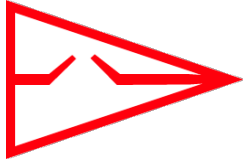
- 7.1 One (1) race is required to be completed to constitute a series.
- 7.2 A boat's series score will be the total of her race scores.
- 7.3 Boats to be scored TLE and not thereafter retiring, being penalized or given redress will be scored points equal to the number of boats finishing within the time limit plus two (2) points, but not worse than the number of starters, by the race committee without a hearing. This changes RRS A4.2 and A5.
- 7.4 Scoring inquiries may be made at the protest desk.
- 7.5 ONE DESIGN scoring will be granted for any class with at least five (5) entries.

8 RADIO COMMUNICATIONS

The race committee will communicate with the competitors on VHF channel 72.

FIGURE A1 – Race Area for PHRF & CRUISING ONE DESIGN Classes





Hospice Cup XXXIII

Eastport Yacht Club

September 20, 2014



ATTACHMENT B

For the HARBOR 20 Class

1 SCHEDULE OF RACES

- 1.1 The **HARBOR 20** class shall compete in one (1) race.
- 1.2 Competitors shall rendezvous at 1100 hours in the vicinity of **CBYRA "W"** (Y AN, Fl 4.0s).
- 1.3 No warning signal will be made after 1430 hours.

2 THE COURSE

- 2.1 The course, shown in Figure B1, will be:
START – CBYRA "X" – G13 – FINISH
- 2.2 The course is approximately 5.8 nm.
- 2.3 All rounding marks shall be kept to **PORT**.
- 2.4 The Horn Point Shoal Mark (HP, Fl W 6.0s) and the Greenbury Point Dolphin (A, Fl Y 2.5s) shall be passed on the channel side.

3 MARKS

The marks have the following Lat/Long coordinates.

CBYRA "W"	CBYRA "X"	G13	G 1SC
<u>Y AN, Fl 4.0s</u>	<u>R2, Fl 2.5s</u>	<u>G13</u>	<u>G 1SC</u>
N 38° 57.49'	N 38° 56.50'	N 38° 58.94'	N 38° 58.89'
W 076° 26.50'	W 076° 25.56'	W 076° 28.40'	W 076° 28.80'

4 THE START

- 4.1 Upon the completion of starting all **HOSPICE** class boats, the Race Committee Signal Boat may reposition around **CBRYA "W"** in order to set a starting line square to the course.
- 4.2 The Race Committee will signal a wakeup call with multiple sounds, approximately 1 minute prior to the Warning signal.
- 4.3 The Race Committee will use a large EYC burgee as the **HARBOR 20** Warning/class flag.
- 4.4 Recalls will be signaled in accordance with RRS 29.
- 4.5 The Race Committee may attempt to notify boats identified as on the course side by announcing their sail numbers on VHF channel 74. Failure to transmit or receive such notification will not be grounds for redress. This changes RRS 62.

5 THE FINISH

- 5.1 The finish line will be between a staff displaying an orange flag on the NW corner of the EYC deck and **"G 1SC"** at the mouth of Spa Creek.

5.2 When finishing, “G 1SC” shall be left to starboard. Boats that have finished shall clear the finish area completely. Boats leaving Spa Creek after crossing the finish line shall pass to the north of “G 1SC.” This changes RRS 28.1.

6 TIME LIMIT

6.1 If no boat in the **HARBOR 20** class finishes within three (3) hours of the start, the race will be abandoned.

6.2 Boats failing to finish within one (1) hour after the first **HARBOR 20** that sails the course and finishes will be scored DNF. This changes RRS 35 and A4. Boats leaving the course without finishing shall promptly notify the race committee on VHF channel 74.

7 SCORING

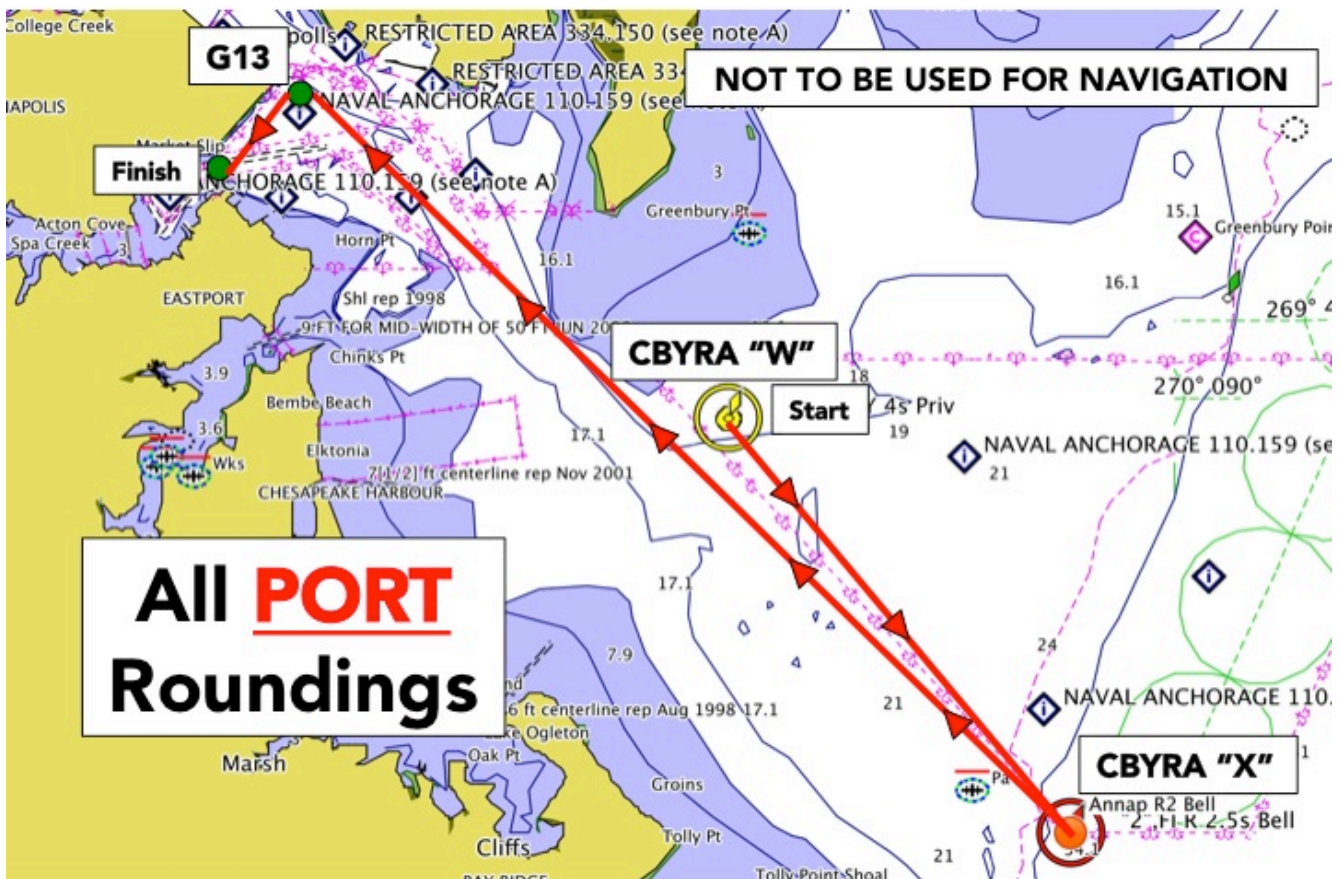
7.1 Boats to be scored TLE and not thereafter retiring, being penalized or given redress will be scored points equal to the number of boats finishing within the time limit plus two (2) points, but not worse than Did Not Finish, by the race committee without a hearing. This changes RRS A4.2 and A5.

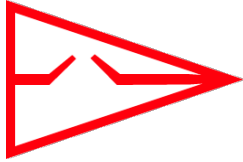
7.2 Scoring inquiries may be made at the protest desk.

8 RADIO COMMUNICATIONS

The race committee will communicate with the competitors on VHF channel 74.

FIGURE B1 – Course for HARBOR 20 Class





Hospice Cup XXXIII

Eastport Yacht Club

September 20, 2014



ATTACHMENT C

For the HOSPICE Class

1 SCHEDULE OF EVENTS

- 1.1 A mandatory competitors meeting for all **HOSPICE** class competitors will be held on Wednesday, September 17, 2014, at the Eastport Yacht Club, 317 First Street, Annapolis, MD; the meeting will begin at 1900 hours. The skipper or a designated representative of each boat must attend this meeting. Note that all visitors must park off the premises; parking in the EYC lot is by permit sticker only. Unauthorized vehicles are subject to towing at the owner's expense.
- 1.2 The **HOSPICE** class shall compete in one (1) race.
- 1.3 Competitors shall rendezvous at 1100 hours in the vicinity of Y AN, Fl 4.0s (**CBYRA "W"**).
- 1.4 The scheduled time of the warning signal is 1155 hours.
- 1.5 No warning signal will be made after 1330 hours.
- 1.6 All **HOSPICE** class competitors shall display from the backstay a white class flag.

2 THE COURSE

- 2.1 The course, shown in Figure C1, will be:
START (Y AN, Fl 4.0s) – GC1 – R90, Fl 2.5s – R2, Fl 2.5s – FINISH (Y AN, Fl 4.0s)
- 2.2 The course is approximately 8.2 nm.
- 2.3 All rounding marks shall be kept to STARBOARD.

3 MARKS

The marks have the following Lat/Long coordinates.

Y AN, Fl 4.0s	GC1	R90, Fl 2.5s	R2, Fl 2.5s
<u>CBYRA "W"</u>	<u>CBYRA "A"</u>	<u>CBYRA "B"</u>	<u>CBYRA "X"</u>
N 38° 57.49'	N 38° 58.19'	N 38° 58.29'	N 38° 56.50'
W 076° 26.50'	W 076° 24.86'	W 076° 23.33'	W 076° 25.56'

4 THE START

- 4.1 For the **HOSPICE** class, this is a pursuit race with handicaps built into the start time for each boat. The boat with the slowest rating will start first and the fastest will start last. A boat's score will be her order of finish.

4.2 The race committee will signal the starting sequence as follows (this changes RRS 26):

Time	Signal	Flag/Sound
1155	Warning signal for all boats	Raise large EYC burgee with 1 sound.
1156	Preparatory signal for the first boat to start	Raise code flag "P" with 1 sound.
1159		Lower code flag "P" with a long sound.
1200	Starting signal for the first boat to start	Lower large EYC burgee and briefly raise number pennant "0" with 1 sound.
each subsequent start time	Starting signal for remaining boats	Briefly raise number pennant "0" with 1 sound.

- 4.3 For the purposes of definition of “racing,” each boat's preparatory signal is 4 minutes prior to their scheduled start.
- 4.4 The start times for all boats will be based on their PHRF handicap and will be an interval from the warning signal. The Race Committee will use civilian GPS time. The Race Committee will broadcast on VHF channel 74 three (3) time checks: 1130, 1145, and 1155. In the case of a postponement, the Race Committee will broadcast a time check at ten (10) minutes before the start and at the Warning Signal on VHF channel 74.
- 4.5 The start time for each boat, including its time interval from the first start, will be available at EYC no later than 1730 hours on Friday, September 19, 2014, and will be posted on the EYC website.
- 4.6 The start line will be between a staff displaying an orange flag on the race committee boat and Y AN, Fl 4.0s (CBYRA “W”).
- 4.7 After the warning signal for the first start, boats shall stay clear of the starting area until 4 minutes before their scheduled starting time.
- 4.8 RRS 29.1 is replaced with: “When at a boat’s starting signal any part of her hull, crew or equipment is on the course side of the starting line, the race committee shall promptly hail her number on VHF channel 74. **Individual Recall, code flag “X,” will not be used.**” This changes RRS 29.1.
- 4.9 Boats that are OCS will receive a scoring penalty of 10 minutes plus the amount of time early. This changes RRS 44.3(c).
- 4.10 In the event a postponement is signaled on the water, the race committee will announce the revised start times on VHF channel 74 before lowering the postponement flag.

5 THE FINISH

- 5.1 The finish line will be between a staff displaying an orange flag on the race committee boat and Y AN, Fl 4.0s (CBYRA “W”).
- 5.2 The race committee may shorten the course at any rounding mark in accordance with RRS 32.

6 TIME LIMIT

The time limit for each race shall be three and one-half (3½) hours. Boats not finishing within one (1) hour of the first boat in their class to finish will be scored TLE. This changes RRS 35 and Notice of Race *Time Limit*.

7 SCORING

- 7.1 Boats will be scored in the order of finish.
- 7.2 Boats to be scored TLE and not thereafter retiring, being penalized or given redress will be scored points equal to the number of boats finishing within the time limit plus two (2) points, but not worse than Did Not Finish, by the race committee without a hearing. This changes RRS A4.2 and A5.
- 7.3 Scoring inquiries may be made at the protest desk.

8 RADIO COMMUNICATIONS

The race committee will communicate with the competitors on VHF channel 74.

FIGURE C1 – Course for HOSPICE Class

