



# 29er World Championships

Pwllheli, North Wales

8th to 14th August 2015

The Organising Authority is the Welsh National Sailing Academy (Plas Heli)  
in conjunction with the International 29er Class Association

## NOTICE OF RACE

*Paras 6.1 and 16 were amended on 1st May 2015*

*Para 1.3 was amended and Attachment B added on 13th May 2015*

### 1. RULES

- 1.1 The regatta will be governed by the rules as defined in *The Racing Rules of Sailing*.
- 1.2 RRS Appendix P, *Special Procedures for Rule 42*, will apply
- 1.3 The RYA Prescriptions that will apply are stated in full in Attachment B of this Notice of Race
- 1.4 If there is a conflict between languages the English text will take precedence.

### 2. ADVERTISING

Boats may be required to display advertising chosen and supplied by the Organising Authority.

### 3. ELIGIBILITY AND ENTRY

- 3.1 The regatta is open to all boats of the International 29er Class.
- 3.2 Eligible boats may enter through the event website [www.29erworlds.org](http://www.29erworlds.org)
- 3.3 **Parent/Guardian Declarations:** All helms and crews under 18 years of age during the event shall complete a signed Parent/Guardian Declarations which can be downloaded from the event site. Declaration forms, which must be signed by a Parent/ Guardian, can be handed in at registration or emailed to [gareth.roberts@plasheli.org](mailto:gareth.roberts@plasheli.org)

### 4. FEES

- 4.1 Entry fee: £325 (until Tuesday 30th June 2015), £425 (until Saturday 1st August 2015)
- 4.2 No entries will be accepted after 1st August 2015
- 4.3 Coach Event Registration Fee £50 per person



4.4 Refunds for cancelled entries 50% up to Tuesday 30th June 2015

## 5. FORMAT OF RACING

The regatta will consist of a Qualifying series and a Final series.

## 6. SCHEDULE

6.1 The Championship schedule will be as follows,

<b>Day:</b>	<b>Date:</b>	<b>Event:</b>
1	Thursday 6th August	Registration/Measurement & Inspection
2	Friday 7th August	Registration/Measurement & Inspection
3	Saturday 8th August	Registration/Measurement & Inspection Practice races, warning signal at 14.00 Opening Ceremony at 18.30
4	Sunday 9th August	Qualifying series races
5	Monday 10th August	Qualifying series races
6	Tuesday 11th August	Qualifying series races
7	Wednesday 12th August	Final series races
8	Thursday 13th August	Final series races
9	Friday 14th August	Final series races Prize Giving & Closing Ceremony

6.2 On Friday 14th August there will be no warning signal after 1500.

## 7. MEASUREMENTS

7.1 All boats will be inspected for class rules compliance prior to racing, according to the Schedule of Events. Additional spot measurement checks may be carried out during the Championship.

7.2 Only one set of sails, and one forestay, shall be used throughout the regatta.

7.3 Equipment shall only be replaced with the permission of the Race Committee.

## 8. SAILING INSTRUCTIONS

The Sailing Instructions will be available at registration.

## 9. VENUE

9.1 The 2015 Zhik 29er World Championships will be held at Welsh National Sailing Academy, Hafan, Pwllheli, Gwynedd, LL53 5YT North Wales, United Kingdom

9.2 Racing will take place in the waters off Pwllheli

9.3 Attachment A shows the approximate location of the racing areas

## 10. COURSES

Courses will be windward-leeward with a gate at the leeward end of the course. The race target time will be 30 minutes.



**11. PENALTY SYSTEM**

RRS 44.1 and RRS P2.1 are changed so that the Two-Turns Penalty is replaced by the One-Turn Penalty.

**12. SCORING**

12.1 The Low Points Scoring System of RRS Appendix A will apply.

12.2 THREE qualifying races are required to be completed by all fleets to constitute a regatta.

**13. SUPPORT BOATS**

13.1 Support boats shall be registered with the Organising Authority and will be required to comply with local legislation and event support boat regulations. Coaches are required to complete on-site registration and pay the appropriate fee as per NoR 4.3 at the race office at the venue.

13.2 All support boats shall display their national letters on a flag or outboard covers.

13.3 If called upon support boats will be required to act as rescue boats.

**14. INTERNATIONAL JURY**

An International Jury will be appointed in accordance with RRS 91(b). Its decisions will be final as provided in RRS 70.5

**15. PRIZES**

Prizes will be awarded to the first three boats in the gold fleet.

Other prizes will be awarded at the discretion of the Organising Authority

Class perpetual trophies will be awarded to:

- a. Overall winning team
- b. Top female team
- c. Top youth team (must both be born in 1997 or later)

**16. RIGHTS TO USE NAMES & LIKENESSES**

Competitors automatically grant to the Organising Authority without payment the right in perpetuity to make, use and show any motion pictures, still pictures and live, taped or filmed television of or relating to the event.

A drone may be flown by a licensed company to record video and still imagery primarily for the event advertising and promotion.

**17. RISK STATEMENT**

RRS 4 of the Racing Rules of Sailing states: "The responsibility for a boat's decision to participate in a race or to continue racing is hers alone."

Sailing is by its nature an unpredictable sport and therefore inherently involves an element of risk. By taking part in the event, each competitor agrees and acknowledges that:



- a) They are aware of the inherent element of risk involved in the sport and accept responsibility for the exposure of themselves, their crew and their boat to such inherent risk whilst taking part in the event;
- b) They are responsible for the safety of themselves, their crew, their boat and their property whether afloat or ashore;
- c) They accept responsibility for any injury, damage or loss to the extent caused by their own actions or omissions;
- d) Their boat is in good order, equipped to sail in the event and they are fit to participate;
- e) The provision of a race management team, patrol boats and other officials and volunteers by the event organiser does not relieve them of their own responsibilities;
- f) The provision of patrol boat cover is limited to such assistance, particularly in extreme weather conditions, as can be practically provided in the circumstances.

## 18. INSURANCE

Each participating boat shall be insured with valid third-party liability insurance with a minimum cover of £2 million per event or the equivalent.

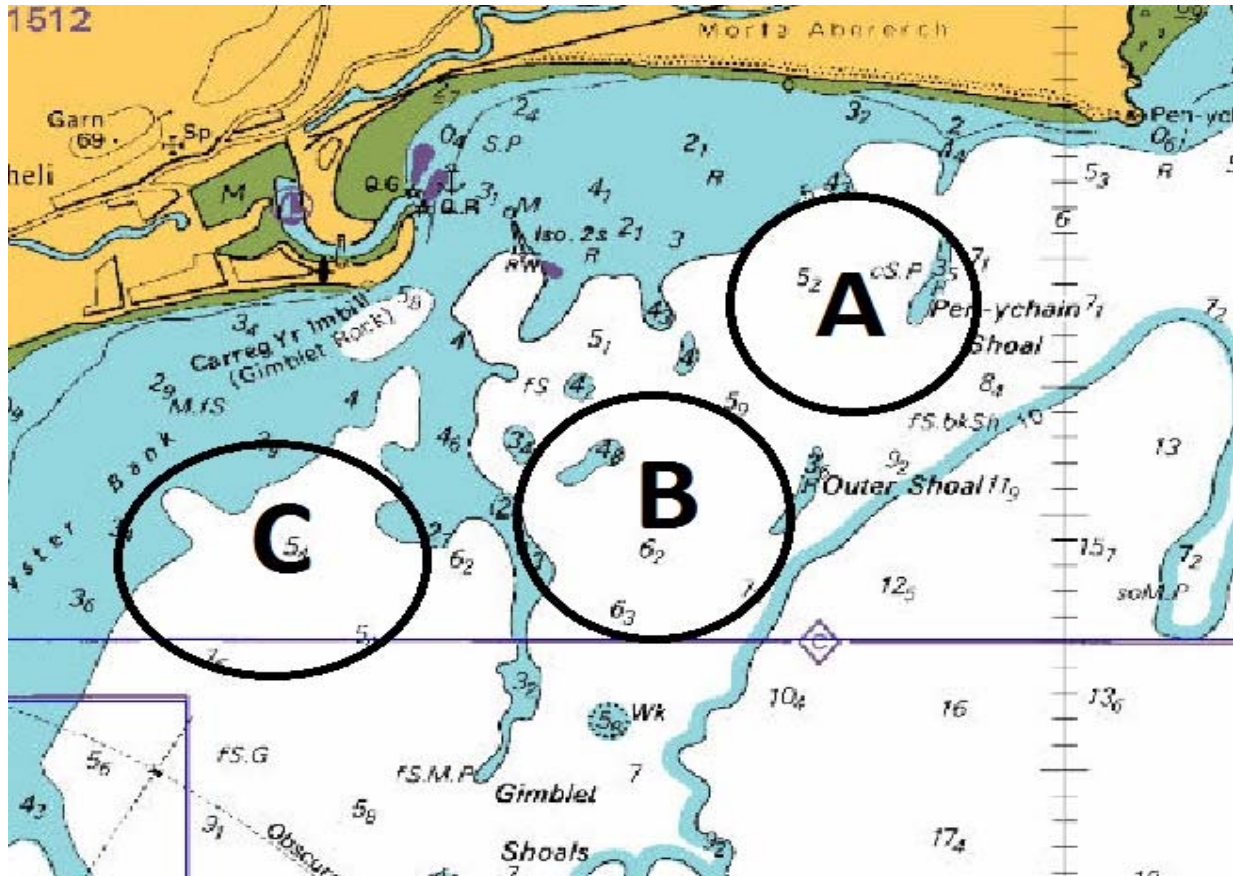
## 19. FURTHER INFORMATION

For information on travel and accommodation, including lists of local hotels, holiday rentals, B&B's, campervans, caravans and camping please check the local event website [www.29er2015.com](http://www.29er2015.com)



# Attachment A

## RACING AREA



## ATTACHMENT B - RYA PRESCRIPTIONS

*The RYA prescriptions that apply*

### Rule

#### 5. Anti-Doping

The national authority procedural rules required by ISAF regulation 21.14 to implement the World Anti-Doping Code through ISAF regulation 21 are the *RYA Anti-Doping Rules*, as published on the RYA website.

#### 67. Damages

1. Any issue of liability or claim for damages arising from an incident while a boat is bound by the Racing Rules of Sailing shall be subject to the jurisdiction of the courts and not considered by a protest committee.
2. A boat that takes a penalty or retires does not thereby admit liability for damages or that she has broken a rule.

#### 86.3 Rule Changes

An organising authority wishing to develop and test a rule change shall obtain prior approval from the RYA. The organising authority shall promptly report the results of the test to the RYA.

#### 88.2 Changes to National Authority Prescriptions

Notices of race and sailing instructions shall not change a prescription of the RYA. However, when an international jury has been appointed for an event, only the prescriptions of rules 5, 67, 86.3 and 88.2 shall apply.