



# 29er World Championships

Pwllheli, North Wales

8th to 14th August 2015

The Organising Authority is the Welsh National Sailing Academy (Plas Heli)  
in conjunction with the International 29er Class Association

## SAILING INSTRUCTIONS

And Amendment 1 8/8/2015

### 1. RULES

- 1.1 The regatta will be governed by the rules as defined in *The Racing Rules of Sailing*.
- 1.2 RRS Appendix P, *Special Procedures for Rule 42*, will apply.
- 1.3 The RYA Prescriptions that will apply are stated in full in Attachment B of the Notice of Race.
- 1.4 If there is a conflict between languages the English text will take precedence.
- 1.5 Where there is conflict with the Notice of Race, the Sailing Instructions shall prevail except that neither shall change nor alter any Class Rules. This changes RRS 63.7.
- 1.6 Penalties for breaches designated [DP] or breaches of RRS 41, the Class Rules or Equipment Inspection Regulations are at the discretion of the international jury.
- 1.7 [SP] denotes a rule for which a standard penalty may be applied by the race committee without a hearing;
- 1.8 [NP] denotes a rule that shall not be grounds for protest by a boat. This changes RRS 60.1(a).

### 2. [NP][DP] ADDITIONAL IDENTIFICATION

While racing each boat shall display a coloured placard corresponding to the fleet to which she has been assigned and inserted in the sail pocket near the clew of the mainsail. Placards will be available from the race office.

### 3. NOTICES TO COMPETITORS

Notices to competitors will be posted on the official notice board, located in the main hall.

### 4. CHANGES TO SAILING INSTRUCTIONS

Any change to the sailing instructions will be posted not less than 30 minutes before flag D is displayed (instruction 5.2), except that any change to the schedule of races will be posted by 20:00 hours on the day before it will take effect. Reassignment of fleets to racing areas will be posted before Flag D is displayed; see instruction 5.2.



## **SIGNALS MADE ASHORE**

- 5.1 Signals made ashore will be displayed on the flag poles next to the bridge on the balcony. When a signal is displayed over a fleet flag it applies to that fleet only.
- 5.2 [DP][NP] Flag D with one sound means: “The warning signal will be made not less than 60 minutes after flag D is displayed”. Boats shall not launch until this signal is made.

## **6. FORMAT OF RACING**

- 6.1 The regatta will consist of a qualifying series and a final series.

### **6.2 Qualifying Series:**

- (a) For the qualifying series boats will be assigned to fleets Yellow, Blue, Red and Green, of, as nearly as possible, equal size and ability. Initial fleet assignments will be made by a seeding committee appointed by the Organising Authority, and posted by 09:00 on the first day of racing.
- (b) In the qualifying series boats will be reassigned to fleets after each day of racing, except if on the first day only one race is completed. If all fleets have completed the same number of races, boats will be reassigned on the basis of their ranks in the series. If all fleets have not completed the same number of races the series scores for reassignment will be calculated for those races, numbered in order of completion, completed by all fleets. Reassignments will be made as follows;

<b>Rank in series</b>	<b>Fleet assignment</b>
-----------------------	-------------------------

First	Yellow
Second	Blue
Third	Red
Fourth	Green
Fifth	Green
Sixth	Red
Seventh	Blue
Eighth	Yellow
Ninth	Yellow

and so on

- (c) Assignments will be based on the ranking available at 21:00 that day regardless of protests or requests for redress not yet decided.
- (d) If all fleets have not completed the same number of races by the end of a day, the fleets with fewer races will continue racing the following day until all fleets have completed the same number of races. All boats will thereafter race in the new fleets.
- 6.3 **Final Series:**
- (a) Boats will be assigned to final series fleets Gold, Silver and Bronze, on the basis of their ranks in the qualifying series. The 40 boats ranked highest in the qualifying series will be assigned to the Gold fleet. The next 40 boats in the qualifying series will be assigned to the Silver fleet. The remaining boats will sail in the Bronze fleet. The Bronze fleet will race in two groups of equal size and ability each day. Assignments in the Bronze fleet will be based on the Bronze fleet ranking. The first assignment and reassignments will be made as follows;

<b>Rank in Bronze fleet</b>	<b>Fleet assignment</b>
First	Red
Second	Green
Third	Green
Fourth	Red
Fifth	Red

and so on

- (b) Assignments for the Bronze fleet will be based on the ranking available at 21:00 that day regardless of protests or requests for redress not yet decided.
- (c) If all Bronze fleets have not completed the same number of races by the end of a day, the fleets with fewer races will continue racing the following day until all fleets have completed the same number of races. All boats will thereafter race in the new fleets.
- (d) Any recalculation of qualifying series rankings after boats have been assigned to final series fleets will not affect the assignments except that a redress decision may promote a boat to a higher fleet.
- (e) For the final series the top three competitors of each day in the Gold Fleet shall wear leader jerseys and display sail dots as directed by the organisers. These items will be supplied by the organisers.

## 7. SCHEDULE

7.1 The Championship schedule will be as follows,

<b>Day:</b>	<b>Date:</b>	<b>Event:</b>
1	Friday 7th August	Registration/Measurement & Inspection
2	Saturday 8th August	Registration/Measurement & Inspection Practice races, warning signal at 14.00 Opening Ceremony at 18.30
3	Sunday 9th August	Qualifying series - 3 races
4	Monday 10th August	Qualifying series - 4 races
5	Tuesday 11th August	Qualifying series - 4 races
6	Wednesday 12th August	Final series - 4 races
7	Thursday 13th August	Final series - 4 races
8	Friday 14th August	Final series - 3 races Prize Giving & Closing Ceremony

- 7.2 On Friday 14th August there will be no warning signal after 15.00.
- 7.3 One extra race per day may be sailed, provided that the event becomes no more than one race ahead of schedule. An extra race will be signalled by the display of flag R at the finish line.
- 7.4 The scheduled time of the warning signal for the first race each day is 10.55 except for Thursday 13th August when it will be 11.55.
- 7.5 To alert boats that a race or sequence of races will begin soon, an orange flag will be displayed with one sound for at least four minutes before a warning signal is displayed.

## 8. CLASS FLAGS

Class flags will be the class insignia on a coloured flag are as follows:



Qualifying Fleets	Final fleets	Flag colour
Yellow	Gold	Yellow
Blue	Silver	Blue
Red	Bronze	Red
Green	Bronze	Green

## 9. RACING AREA

- 9.1 Attachment A shows the location of racing areas.
- 9.2 Assignments of fleets to racing areas will be posted before flag D (instruction 5.2) is displayed.

## 10. THE COURSE

- 10.1 The diagram in Attachment B shows the course, including the course signals, the order in which marks are to be passed, and the side on which each mark is to be left.
- 10.2 No later than the warning signal the course signals and the approximate compass bearing of the first leg will be displayed on a board on the start line committee boat.
- 10.3 Courses will not be shortened. This changes RRS 32.

## 11. MARKS

- 11.1 Marks 1, 2S and 2P will be as follows,
- |          |        |
|----------|--------|
| Course A | Orange |
| Course B | Blue   |
- 11.2 New marks, as provided in SI 13 will be black tetrahedrons.
- 11.3 Starting and finishing marks will be race committee vessels.

## 12. THE START

- 12.1 The starting line will be between staffs displaying orange flags on the starting marks.
- 12.2 [DP][NP] Boats whose warning signal has not been made shall avoid the starting area during the starting sequence for other races.
- 12.3 A boat starting later than 4 minutes after her starting signal will be scored Did Not Start without a hearing. This changes RRS A4 and A5.
- 12.4 If flag U has been displayed as the preparatory signal, no part of the boat's hull, crew, or equipment shall be in the triangle formed by the ends of the starting line and the first mark during the last minute before her starting signal. If a boat breaks this rule and is identified, she shall be disqualified without a hearing but not if the race is restarted, resailed, postponed or abandoned. This changes RRS 26 and Appendix A5.  
When flag U is used as the preparatory signal rule 29.1 "Individual Recall" does not apply. The scoring abbreviation for a flag U penalty is UFD. This changes A11 Scoring Abbreviations.

## 13. CHANGE OF THE NEXT LEG OF THE COURSE

To change the next leg of the course, the race committee will lay a new mark (or move the finishing line) and remove the original mark as soon as practicable. When in a subsequent change a new mark is replaced, it will be replaced by an original mark.

## 14. THE FINISH

The finishing line will be between staffs displaying orange flag on the race committee vessel and either;



- (a) a nearby orange buoy, or
- (b) a staff displaying an orange flag on the nearby race committee vessel.

## 15. PENALTY SYSTEM

- 15.1 RRS 44.1 is changed so that the Two-Turns Penalty is replaced by the One-Turn Penalty.
- 15.2 Appendix P will apply as changed by instruction 15.1 and 15.3.
- 15.3 When a boat is penalized a second or subsequent time during the regatta, her penalty shall be to promptly retire from the race. If she fails to take it she shall be disqualified without a hearing and her score shall not be excluded. This changes Appendix P2.3.
- 15.4 (a) Breaches of SIs 2, 5.2, 12.2, 20, 22, 23, 25, 26, 27, 28 and 29 will not be grounds for a protest by a boat. This changes RRS 60.1(a).
- (b) A boat may accept a discretionary penalty for breaches designated (DP) before a hearing concerning the same incident by completing a form available at the jury office. Penalties for these breaches may be less than disqualification if the jury so decides.
- (c) For breaches designated [SP], the race committee may apply a standard penalty without a hearing.

## 16. TIME LIMITS AND TARGET TIMES

- 16.1 Time limits and target times are as follows:
- | Time limit | Mark 1 Time limit | Target time |
|------------|-------------------|-------------|
| 45 minutes | 15 minutes        | 30 minutes  |
- 16.2 If no boat has passed Mark 1 within the Mark 1 time limit or if no boat has finished within the Time limit the race will be abandoned. Failure to meet the target time will not be grounds for redress. This changes RRS 62.1(a).
- 16.3 Boats failing to finish within 10 minutes after the first boat sails the course and finishes will be scored Did Not Finish without a hearing. This changes RRS 35, A4, and A5.
- ## 17. PROTESTS AND REQUESTS FOR REDRESS
- 17.1 Protest forms are available at the race office. Protests and requests for redress or reopening shall be delivered there within the appropriate time limit.
- 17.2 The protest time limit is 90 minutes after the last boat has finished the last race of the day, or the race committee signals no more racing today, whichever is later.
- 17.3 Notices will be posted no later than 30 minutes after the protest time limit to inform competitors of hearings in which they are parties or named as witnesses. Hearings will be held in the protest room, located in the classrooms off the main hall
- 17.4 Notices of protests by the race committee or jury will be posted to inform boats under RRS 61.1(b).
- 17.5 A list of boats that, under SI 15.2, have been penalised for breaking rule 42 will be posted.
- 17.6 On the last scheduled day of racing a request for reopening a hearing shall be delivered:
- (a) within the protest time limit if the requesting party was informed of the decision on the previous day.
  - (b) no later than 30 minutes after the requesting party was informed of the decision on that day.

(c) This changes RRS 66.

17.7 On the last scheduled day of racing a request for redress based on a jury decision shall be delivered no later than 30 minutes after the decision was posted. This changes rule 62.2.

17.8 Decisions of the jury will be final as provided in RRS 70.5.

## 18. ARBITRATION

18.1 Add new RRS A4.3: “A boat that may have broken a rule of Part 2 or RRS 31 while racing may take a penalty after she has finished or retired and prior to the start of a protest hearing involving the incident. Her penalty shall be a Scoring Penalty of 30% calculated as described in RRS 44.3(c), but not more than the score for DSQ. However, if she caused injury or serious damage or gained a significant advantage in the race or series by her breach, her penalty shall be to retire.”

18.2 RRS 63.1 is changed to add: “An appointed arbitrator may allow the protest to be withdrawn”

18.3 An arbitration meeting will be held prior to a protest hearing for each incident resulting in a protest involving a rule of Part 2 or RRS 31, unless the arbitrator deems the incident inappropriate for arbitration. One representative of each party, who was on board at the time of the incident, will meet with the arbitrator. If all the parties to a protest are not represented, the arbitration meeting shall not be held. No witnesses will be permitted.

18.4 After hearing the testimony, the arbitrator will offer one of the following opinions:

- (a) The protest committee would find the protest to be invalid. The arbitrator will allow the protestor to withdraw the protest.
- (b) The protest committee would find that no boat broke a rule. The arbitrator will allow the protestor to withdraw the protest.
- (c) The protest committee would find that one or more boats represented in the arbitration meeting broke a rule of Part 2 or RRS 31. The arbitrator would offer each of those boats the option to accept a Scoring Penalty, or to retire. The arbitrator will then give the protestor an opinion about whether the protest committee would be likely to assign any additional penalties. The arbitrator will allow the protestor to withdraw the protest.
- (d) A protest hearing is appropriate.
- (e) The protest committee will schedule a protest hearing for any protests that are not withdrawn. Any boat that accepted a penalty in accordance with W18.1 will not be penalised further as a result of the protest hearing unless the protest committee concludes that the boat caused injury or serious damage, gained a significant advantage in the race or series, or broke a rule other than a rule of Part 2 or RRS 31.1.

## 19. SCORING

19.1 THREE qualifying races are required to be completed by all fleets to constitute a regatta

19.2 FIVE races are required to be completed by each fleet to constitute a qualifying series. If FIVE races are not completed as scheduled, the qualifying series will be extended to complete them.

19.3 If at the end of the qualifying series some boats have more race scores than others, scores for the most recent races will be excluded so that all boats have the same number of race scores.

19.4 For the qualifying series, rule A4.2 is changed so that the scores are based on the number



of boats assigned to the largest fleet.

- 19.5 Except for race scores excluded under instruction 19.3, a boat's regatta score will be the total of her qualifying series position, plus her final-series score.
- 19.6 Each final series fleet will be scored separately. Different final series fleets need not have completed the same number of final races. The boats in the Gold fleet will be ranked highest, etc.
- 19.7 Series Scores (apply separately to qualifying and final series).
- 19.8 When fewer than FIVE races have been completed, a boat's series score will be the total of her race scores.
- 19.9 When from 5 to 8 races have been completed, a boat's series score will be the total of her race scores excluding her worst score.
- 19.10 When 9 to 11 races have been completed, a boat's series score will be the total of her race scores excluding her two worst scores.
- 19.11 To request correction of an alleged error in posted race or series results, a boat shall complete a scoring enquiry form available at the race office.

## 20. [NP][DP] SAFETY REGULATIONS

- 20.1 Competitors shall wear personal flotation devices adequate for the conditions. Flag Y will not be displayed. This changes RRS 40.
- 20.2 [SP] **Check-out and check-in:** The requirements of this instruction are specified for the safety of competitors.  
Prior to leaving shore, each boat must scan their RFID wristband at the provided kiosks located in the Beachmasters Office adjacent to the entrance to the beach. Sailors must scan back in when returning to shore. It is the responsibility of the sailor to visibly confirm their sail number or name when checking in/out with the kiosk. Wristbands will be issued at registration (1 per boat). Replacement of lost wristbands will be £10.  
Penalty for a breach of this SI shall be 3 points.
- 20.3 A boat that retires from a race shall notify the race committee as soon as possible.
- 20.4 Under all circumstances coaches and other support boats are expected to assist any boat in distress.
- 20.5 When Flag V is displayed by the race committee signal vessel, coach and other support boats will collaborate with the race committee in rescue tasks.

## 21. [DP] REPLACEMENT OF CREW

- 21.1 Substitution of competitors will not be allowed without prior written approval of the race committee.
- 21.2 Substitution of damaged or lost equipment will not be allowed unless approved by the race committee. Requests for substitution shall be made to the committee at the first reasonable opportunity.

## 22. [DP][NP] EQUIPMENT & MEASUREMENT CHECKS

- 22.1 A boat or equipment may be inspected at any time for compliance with the class rules and sailing instructions. On the water, a boat can be instructed by a race committee equipment inspector or measurer to proceed immediately to a designated area for inspection.
- 22.2 Only one set of sails and one forestay may be used during the regatta. They shall be



presented and stamped/tagged during the measurement procedure.

**23. [NP][DP] ADVERTISING**

Boats shall display the advertising supplied by the Organising Authority on both side of the forward 25% of the hull.

**24. OFFICIAL BOATS**

Official boats will be marked as follows:

Race committee boats	White RC flag
Safety boats	Blue (Blue Course Area) and White (Orange Course Area) numbered flags
Jury boats	White JURY flag

**25. [NP][DP] SUPPORT BOATS**

25.1 Team leaders, coaches and other support personnel shall stay outside areas where boats are racing from the time of the preparatory signal until all boats have finished or retired or the race committee signals a postponement, general recall or abandonment.

25.2 Support boats shall be marked with their national letters on outboard covers or a flag. Minimum height for letters is 210mm. Minimum flag height above the water is 1 metre.

**26. [DP][NP] TRASH DISPOSAL**

Trash may be placed aboard support and race committee boats.

**27. [DP][NP] BERTHING**

Boats shall be kept in their assigned places in the boat park.

**28. [DP][NP] RADIO COMMUNICATION**

Except in an emergency, a boat shall neither make radio transmissions while racing nor receive radio communications not available to all boats. This restriction includes mobile telephones.

**29. [SP][DP][NP] ELECTRONIC EQUIPMENT**

29.1 The Organising Authority will supply GPS units for use in races in the Qualifying Series and Fleet Racing Series. Boats shall carry these GPS units while racing. Penalty for a breach of this SI shall be 2 points.

29.2 A drone may be flown by a licensed company to record video and still imagery primarily for the event advertising and promotion.

**30. PRIZES**

Prizes will be awarded to the first three boats in the gold fleet.

Other prizes will be awarded at the discretion of the Organising Authority.

Class perpetual trophies will be awarded to:

- a. Overall winning team
- b. Top female team
- c. Top youth team (must both be born in 1997 or later)





### **31. RISK STATEMENT**

RRS 4 of the Racing Rules of Sailing states: “The responsibility for a boat’s decision to participate in a race or to continue racing is hers alone.”

Sailing is by its nature an unpredictable sport and therefore inherently involves an element of risk. By taking part in the event, each competitor agrees and acknowledges that:

- a) They are aware of the inherent element of risk involved in the sport and accept responsibility for the exposure of themselves, their crew and their boat to such inherent risk whilst taking part in the event;
- b) They are responsible for the safety of themselves, their crew, their boat and their property whether afloat or ashore;
- c) They accept responsibility for any injury, damage or loss to the extent caused by their own actions or omissions;
- d) Their boat is in good order, equipped to sail in the event and they are fit to participate;
- e) The provision of a race management team, patrol boats and other officials and volunteers by the event organiser does not relieve them of their own responsibilities; The provision of patrol boat cover is limited to such assistance, particularly in extreme weather conditions, as can be practically provided in the circumstances

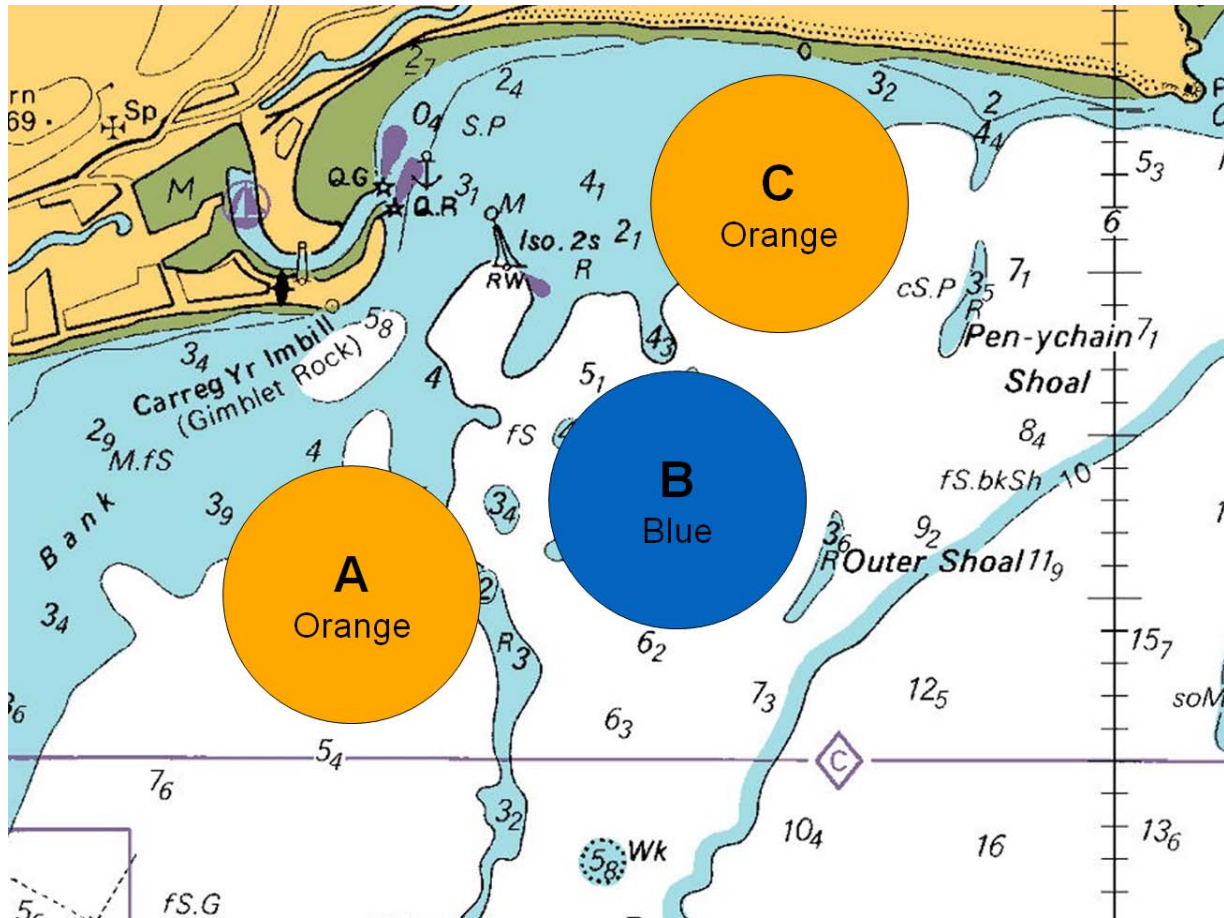
### **32. RIGHTS TO USE NAMES AND LIKENESSES**

Competitors automatically grant to the Organising Authority without payment the right in perpetuity to make, use and show any motion pictures, still pictures and live, taped or filmed television of or relating to the event.



# Attachment A

## RACING AREA



Racing Area C may be used as an alternative location depending on prevailing conditions.



## Attachment B

### THE COURSE

<b>L</b>	<b>COURSE: WINDWARD / LEEWARD with reaching finish</b>
Signal	Mark Rounding Order
L2	Start - 1 - 2s/2p - 1 - 2p - Finish
L3	Start - 1 - 2s/2p - 1 - 2s/2p - 1 - 2p - Finish

