



Royal Bermuda Yacht Club

SAILING INSTRUCTIONS DIGICEL BERMUDA INTERNATIONAL DINGHY RACE WEEKEND

APRIL 9 – 11, 2015
Bermuda

Abbreviations:

OA	Organising Authority (Royal Bermuda Yacht Club)
BSA	Bermuda Sailing Association (National Authority)
RBYC	Royal Bermuda Yacht Club
RRS	Racing Rules of Sailing
NoR	Notice of Race
SI	Sailing Instructions
SSI	Special Sailing Instructions – specific to each event
ISAF	International Sailing Federation
RBYCSA	Royal Bermuda Yacht Club Sailing Academy
PRO	Principal Race Officer
RC	Race Committee
PC	Protest Committee

The Royal Bermuda Yacht Club, their Officers, Members and Employees bear no responsibility for accidents; damage or injuries to boats or their personnel in any way or from any cause during or related to any regatta under its authority. Attention is drawn to ISAF RRS 4 (Decision to Race).

1. RULES

- 1.1. The regatta will be governed by the rules as defined in the RRS.
- 1.2. The BSA Prescriptions (see NoR), the BSA Code of Conduct (See NoR) and the International Class Rules of the individual Classes except as any of these are modified by local Class rules, the NoR, SIs and Appendices. In the event of document conflict, the relevant Appendix will prevail. See rule 63.7.

2. NOTICES

Notices to competitors and changes in the SIs will be posted on the official regatta notice board located at the RBYC. The notices will also be posted on the RBYC website and Regatta Network events' page.

3. CHANGES IN SAILING INSTRUCTIONS

- 3.1. Changes to the Schedule of Races, (see Appendix 2) will be posted before 2000 hrs the day preceding the changes affected in accordance with SI 2.
- 3.2. Changes to the SIs will be posted before 0900 hrs on the day they take effect.

4. SAFETY

- 4.1. The RC may stop a boat from launching or require it to return to shore, if it considers the boat, its equipment, helm or crew are unable to sail in the conditions to be encountered. The RC decision will not be grounds for redress. This changes RRS 62.1(a). Neither the existence of this power of the RC nor any failure of the RC to exercise such power in a particular circumstance shall alter the responsibilities of

DIGICEL BERMUDA DINGHY RACE WEEKEND – SIs: FINAL

the sailors and parents and guardians as set out above or vary the terms of the Guardian Release and Declaration Form.

- 4.2. Competitors shall wear a personal flotation device at all times when afloat except briefly while changing or adjusting clothing or personal equipment. An operational whistle shall be securely attached to the personal flotation device. Signal flag Yankee (Y) will not be displayed. This changes rule 40 and the preamble to Part 4.
- 4.3. Competitors in difficulty shall obey instructions given by the Committee Boat, an Official Boat or Coach Boat. Competitors shall not leave the race area without the permission of the RC.
- 4.4. The RC may make random safety checks and will protest any infringing boat. The penalty will be at the discretion of the PC.

5. SIGNALS MADE ASHORE

- 5.1. Signals made ashore will be displayed from the RBYC flagpole
- 5.2. When “AP” is displayed ashore, unless a postponement is signalled, the Warning Signal will be made not less than 30 minutes after AP is lowered.
- 5.3. A “D” flag displayed means do not leave the dock

6. RACING AREA AND COURSES

- 6.1. The racing area is described in Appendix 2.
- 6.2. Courses are shown in Appendix 1.

7. SCHEDULE

- 7.1. Registration of all classes will take place in the RBYC Trophy Lounge on Wednesday April 8 from 1600 hours to 1800 hours.
- 7.2. There will be a daily competitors briefing for BRAVO COURSE on the RBCY dock at 0900 hours.
- 7.3. The number of races scheduled, the number to constitute a series and the number to be discarded will be specified in Appendix 2.

8. CLASS FLAGS AND COURSE ASSIGNMENT

Will be as described in the Appendix 2.

9. MARKS

The Starting/Finishing marks will be orange; turning marks will be yellow; change marks will be red/yellow. See Appendix 1.

10. THE START

- 10.1. The Starting Line will be between a staff displaying an orange flag on the Committee or Official Boat and the course side of the port end starting mark. The RC may deploy a “keep off” buoy astern. Boats shall not pass between this buoy and the Committee Boat.
- 10.2. A series of short sound signals may be made prior to a warning signal to inform of a Race Committee action.
- 10.3. The Committee Boat will display, no later than the Warning Signal, the approximate magnetic bearing from the Starting Line to the windward mark, the order in which the Classes will sail and the course(s) to be sailed.
- 10.4. A boat which starts later than four minutes after her starting signal will be scored DNS without a hearing. This changes rule A4 and A5.
- 10.5. At least 3 boats of the same Class must come to the starting line for a race to be started.
- 10.6. If any part of a boat’s hull, crew or equipment is on the course side of the starting line at any time during the two minutes before her starting signal, the RC Signal Boat may fly flag “V” until the starting line is clear as a guide to the competitors. This procedure is not open to protest or redress. Failure of the RC to display “V” shall not grounds for protest or redress, this changes RRS 62.1a.

11. CHANGING THE POSITION OF A MARK

- 11.1. To change the next leg of the course, the race committee will lay a new mark (or move the finishing line) and remove the original mark as soon as practicable. When in a subsequent change a new mark is replaced, it will be replaced by an original mark.
- 11.2. On the Course:
 - 11.2.1. Code Flag “C” and a red flag or board means: The next mark has been replaced. Sail to the red replacement mark.
 - 11.2.2. Code Flag “C” and a green flag means: the next mark has been replaced. Sail to the green replacement mark.
 - 11.2.3. Code Flag “C” means sail to the original Yellow mark.

12. THE FINISH

The Finishing Line will be between a staff displaying an orange flag on the Committee or Official Boat and the course side of the nearby mark.

13. TIME LIMIT

- 13.1. Time Limit for a race will be sixty minutes after the start of that class.
- 13.2. When one or more boats in a class finish within the Time Limit, all boats in that class will be recorded as finishing except that boats finishing after the time limit or more than fifteen minutes after the finish of the first boat in her class, whichever is later, will be scored Time Limit Elapsed TLE, two (2) points more than the last boat to finish within the Time Limit. This changes RRS 35, A 4.2 and A5.
- 13.3. Alternative Finishing Line – the “Whisky” rule.
 - 13.3.1. When an official boat displays flag “W” with two sounds, boats will be finished (*whiskied*) by this official boat. This process may take place at a mark of the course or on a leg of the course.
 - 13.3.2. When a boat finishes in accordance with this instruction she shall be given a finishing place after all boats which completed the course and boats that were *whiskied* ahead of that boat.
 - 13.3.3. In the event of expiry of the race time limit, any sailor *whiskied*, shall return to the start/finish area, or respond as instructed, and be scored TLE.

14. PROTESTS

- 14.1. Protest forms are available at the RBYC located in a box, marked Protest forms, outside the doors of the basement locker rooms. Completed protest forms shall be filed with the RC not later than sixty minutes after the docking of the Committee Boat. The end of Protest time limit will be posted on the official notice board.
- 14.2. The same protest time limit applies to all Protests by the RC about incidents they observe in the racing area and to Request for Redress.
- 14.3. A notice will be posted on the Notice Board as soon as possible after receipt of Protests to inform competitors there is a hearing in which they are parties to a Protest or named as witnesses.
- 14.4. The posting of hearing notices shall be considered notice as required by RRS 61 and 62.2
- 14.5. On the last day of racing a request for reopening a hearing shall be delivered:
 - 14.5.1. Within the Protest time limit if the requesting party was informed of the decision on the previous day;
 - 14.5.2. No later than 30 minutes after the requesting party was informed of the PC decision.
- 14.6. On the last day of racing a request for redress based on a jury decision shall be delivered no later than 30 minutes after the decision was posted. This changes RRS 62.2

15. RETIREMENT

A competitor who has retired from a race before finishing shall be bound by SI 4.6 and shall report their retirement to the RC prior to leaving the course.

16. PENALTIES

Breaches of NoR 2, and SIs 19 and 20 will not be grounds for a protest by a boat. This changes RRS 60.1 (a). Penalties for these breaches may be less than disqualification if the PC so decides. The scoring abbreviation for

a discretionary penalty imposed under these SIs will be DPI Appendix P will apply. Rule P2.3 will not apply and rule P2.2 is changed so that it will apply to any penalty after the first one.

17. SCORING

A boat may take a 20% Scoring penalty for a breach of a rule of Part 2 (where there was no damage or injury) after the incident, but no later than 15 minutes after the expiry of the Protest Time Limit This changes RRS 44.1

18. EQUIPMENT SUBSTITUTION

Substitution of damaged or lost equipment will not be allowed unless approved by the RC. Requests for substitution shall be made at the first reasonable opportunity.

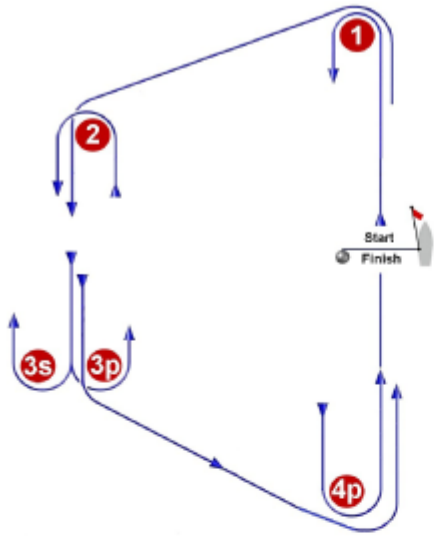
19. COACH BOATS AND ON THE WATER COACHING

- 19.1. Coach Boats shall register with the OA and declare the competitors with whom they are associated.
- 19.2. Unless specifically instructed to do so by the RC, coaches and other support boats, including relatives and supporters of competitors, shall remain a minimum of fifty (50) metres outside the course boundaries from the time of the Preparatory Signal until all boats have finished or the RC signals a postponement, general recall or abandonment.
- 19.3. Coaches and support boats are required to monitor the RC operating VHF Channel and render assistance whenever requested to do so by the RC.

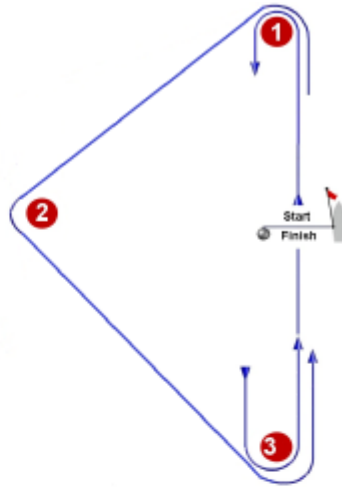
20. COMMUNICATION

- 20.1. VHF communication on the designated operating channel VHF 73 for Alpha Course, VHF 69 for Bravo Course will be used by the RC for communication purposes between the RC and the coaches.
- 20.2. Except in an emergency, a boat shall neither make nor receive radio, cellular phone or data transmissions while racing.

COURSE CARD FOR ALPHA & BRAVO COURSES - APPENDIX 1



Course	Mark Rounding Order
1	Start - 1 - 4 - Finish
2	Start - 1 - 4 - Finish - 1 - 4 - Finish
3	Start - 1 - 4 - Finish - 1 - 4 - Finish - 1 - 4 - Finish
4	Start - 1 - 2 - 3 - 4 - Finish
5	Start - 1 - 2 - 3 - 2 - 3 - 4 - Finish
4G	Start - 1 - 2 - 3s/3p - 4 - Finish
5G	Start - 1 - 2 - 3s/3p - 2 - 3s/3p - 4 - Finish



Course	Mark Rounding Order
6	Start - 1 - 2 - 3 - Finish
7	Start - 1 - 2 - 3 - Finish - 1 - 3 - Finish

DIGICEL BERMUDA INTERNATIONAL DINGHY RACE WEEKEND - APPENDIX 2

Date of event: April 9 – 11, 2015

Race area: *To be determined on the day*

Schedule:






Classes	Apr 9	Apr 10	Apr 11
Optimist Champion	5	5	5
Optimist Green	3	3	3
O’Pen Bic	5	5	5
RS Feva	5	5	5
Laser All Rigs	5	5	5
Comet Class	n/a	n/a	5

Time of 1st Warning Signal: 1055 hours daily

Number of discards: If ten or more races are completed, 2 discards. If five to nine races are completed, 1 discard. If four or less races are completed there will be no discards. RRS Appendix A4 scoring system will be used.

Medical Boat Present: [YES: Coach Boats and Signal Boats]

Racing Course Area & Class flags:

ALPHA COURSE	Comet		Yellow Flag with black class insignia
ALPHA COURSE	Laser		White Flag with red class insignia
ALPHA COURSE	RS Feva		Code Flag ‘F’: White with Red Diamond
BRAVO COURSE	Optimist		Class logo flag
BRAVO COURSE	O’Pen Bic		Class Flag

Opening ceremonies/Prize giving:

- Wednesday April 8, 2015 at 1800 hours on the RBYC Terrace. Jacket and Tie for adults, smart for Children.
- Saturday April 11, 2015 at 1800 hours on the RBYC Terrace. Jacket and Tie for adults, smart for Children.