



**THE RIVER CITY REGATTA**  
**March 14th & 15th, 2015**  
**The Rudder Club of Jacksonville**  
**8533 Malaga Avenue**  
**Jacksonville, FL 32244**

**SAILING INSTRUCTIONS**

**1 RULES**

- 1.1 The regatta will be governed by the rules as defined in the current Racing Rules of Sailing (RRS).
- 1.2 US SAILING Prescriptions will apply
- 1.3 Rules 35 and A4.1 of the RRS are changed by SI-13.

**2 NOTICES TO COMPETITORS**

Official notices to competitors will be posted on the notice board located on the north exterior wall of the Rudder Club and the official web site at <http://www.regattanetwork.com/event/9854>.

**3 CHANGES IN THE SAILING INSTRUCTIONS**

Any change in the Sailing Instructions will be posted on the Official Bulletin Board on the Rudder Club north wall and on the Web Site listed in SI2. Changes after 1130, 14 March will be in the form of a Notice to Competitors except that any change to the schedule of races will be posted by 2000 on the day before it will take effect. Oral changes may be made on the water and will be communicated to each boat prior to her warning signal.

**4 SIGNALS MADE ASHORE**

- 4.1 Signals made ashore will be displayed from the flag pole located on the north side of the Rudder Club.
- 4.2 Code Flag "AP", Answering Pennant, displayed ashore with two sound signals (one when lowered) means "The race is postponed" The warning signal will be made not less than 60 minutes after "AP" is lowered.

**5 SCHEDULE OF RACES**

- 5.1 Five races are scheduled. Additional races may be scheduled for individual classes at that class's request.
- 5.2 Class divisions where differing from SI-6 will be posted on the Official Bulletin Board.
- 5.3 Schedule

**SATURDAY 14 March** - One design, PHRF and Portsmouth classes - three races planned.

Late registration: 1100 –1130

Competitors' meeting: 1200

Warning signal for first class: 1255

**SUNDAY 15 March** - One design, PHRF and Portsmouth classes - two races planned.

Warning signal for first class 0955

\*Note - No starting sequence will be commenced after 1230.

NOTE: The actual number of races on each day may vary depending on weather and other circumstances.

**6 CLASS FLAGS**

Class flags will be the International Numeral Pennants as depicted under Race Signals in the RRS. Assignment of spares will be posted as a Notice to Competitors on both the electronic and physical bulletin boards.

Multihull Open	P1	
PHRF Spinnaker	P2	
PHRF Non-Spinnaker	P3	
PHRF Cruiser	P4	
Flying Scot	P5	
Portsmouth Monohull	P6	
Spare	P8	
Spare	P9	

**7 RACING AREA**

The racing area will be in the St. Johns River between the Buckman Bridge to the south and the Fuller Warren Bridge to the north as depicted on NOAA Chart 11492.

## **8 THE COURSE**

- 8.1 Around the buoy courses will be as depicted on addendum "A" showing the approximate angles between legs, the order of rounding, and the side on which each mark is to be left. The designation shall consist of two letters.
- 8.2 The course for a distance race will be displayed as numbers designating government navigation marks as depicted in addendum B. An orange inflatable mark set to windward as a windward mark will be designated as "W."
- 8.3 The course for each class will be displayed on a white board located aft on the starting line side of the committee boat.
- 8.4 If the Race Committee sets a gate instead of the Leeward Mark, boats shall sail between marks forming the gate from the direction of the last mark and round either the port mark leaving it to port or the starboard mark leaving it to starboard.
- 8.5 If the Race Committee sets an offset mark in the vicinity of the windward mark, boats shall sail around both marks leaving them on the prescribed side.

## **9 MARKS**

Marks 1, 2S, and 2P will be yellow cylinders. Mark 1L will be an orange cylinder. Mark 1L off-set will be a yellow tetrahedron. A new mark laid in accordance with Change of Course procedures will be an orange cylinder. The start mark will be small orange sphere and the finish mark will be a small white sphere.

## **10 START**

- 10.1 The Starting Line will be a line between an orange flag flown on the Race Committee/Signal Boat and a mark set toward the left side of the course from the Committee Boat relative to the first leg of the course.
- 10.2 Boats whose warning signal has not been made shall avoid the starting area.

## **11. CHANGE OF COURSE AFTER THE START**

To change the position of the next mark, the race committee will move the original mark (or the finishing line) to a new position. The change will be signaled before the leading boat has begun the leg, although the mark may not yet be in the new position. Any mark to be rounded

after rounding the moved mark may be relocated without further signaling to maintain the course configuration.

## **12 THE FINISH**

The Finish Line will be between an orange flag flown on the Race Committee/Signal Boat and a mark set toward the left side of the course from the Committee Boat relative to the final leg of the course (opposite side of the committee boat from the starting line). This is to accommodate conducting starts for some classes while others are finishing.

## **13 TIME LIMIT**

The time limit for the first boat in each one design starting class and PHRF round the buoy racing to finish is 90 minutes from her start. One design boats failing to finish within 30 minutes corrected time of the first boat in their class will be scored Did Not Finish. This changes rules 35 and A4.1. The time limit for PHRF boats racing a distance river race around navigation buoys is 240 minutes.

## **14 PROTESTS AND REQUESTS FOR REDRESS**

- 14.1 Protests shall be written on forms available at the Rudder Club or the US SAILING Web Site. They shall be filed with the Protest Committee. Protest time will end 90 minutes after the last boat has finished the last race of the day. Protests will be heard in the approximate order received.
- 14.2 Protest notices will be posted on the electronic and physical Official Bulletin Boards within 30 minutes following the protest time limit.

## **15 SAFETY**

- 15.1 On the first race of each day, boats shall attempt to check in with the Race Committee by sailing past the committee boat on the non-course side prior to their class Warning Signal.
- 15.2 Boats withdrawing from a race prior to finishing a race or retiring before racing has ended for the day shall make every effort to ensure that Race Committee is notified that they have dropped out
- 15.3 All competitors are required to conform with the U.S. Coast Guard regulations and the RRS concerning personal floatation devices and other required equipment.
- 15.4 Yachts shall not impede the passage of a vessel which can safely navigate only within a narrow channel, and give way to commercial fishing

vessels while fishing or vessels with restricted ability to maneuver.

15.5 In accordance with RRS 42.3(i), providing no significant advantage is gained, a boat may employ propulsion using an engine or other method to remain clear of or not impede the passage of a vessel restricted in its ability to maneuver when required by the Inland Rules.

## **16 SCORING**

The Low Point Scoring System of appendix A will apply. PHRF classes will be scored PHRF time on distance. Open classes will be scored in accordance with the Portsmouth Yardstick (HC) System. One race must be completed to

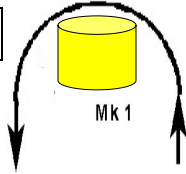
constitute a series. A boat's series score will be the total of her race scores. If 6 races are completed a boat's worst score will be discarded.

## **17 PRIZES**

First, second, and third place prizes will be awarded in classes of more than five finishing yachts. First and second place prizes will be awarded in classes of four to five finishing yachts. A first place prize will be awarded in classes of three or less finishing yachts. One design prizes will be awarded on Sunday 15 March.

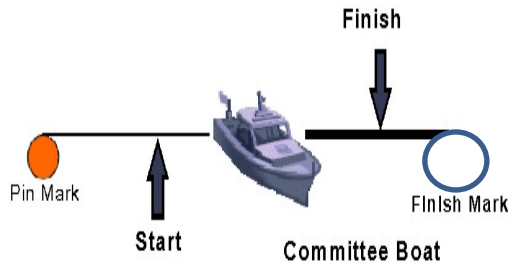
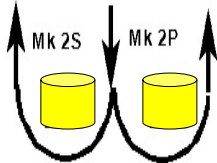
## Round –the-Buoy Courses (Attachment A)

Mark 1 Round to port



Not to Scale

Mark 2 (Gate)  
Round either mark



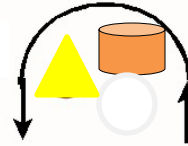
### Windward Leeward Short

# WS

Course: Start, 1, 2P or 2S, 1, Finish

**NOTE: Offset marks and gates are optional.**

## Attachment A

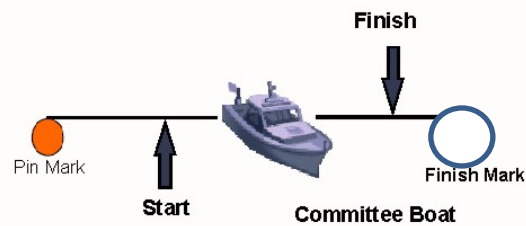
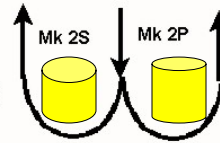


Mark 1L with optional  
offset Round both to port

Not a mark of  
the course

Not to Scale

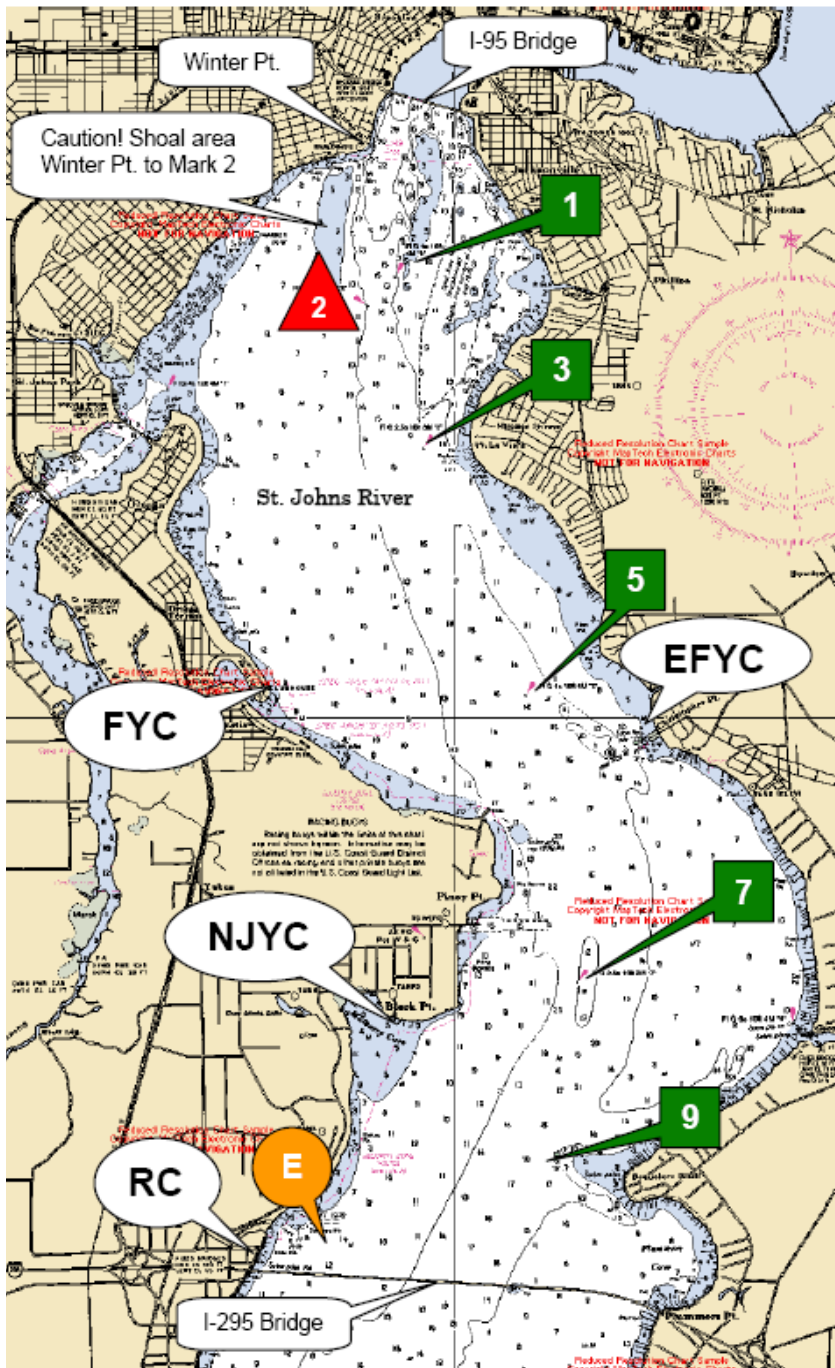
Mark 2 (Gate)  
Round either mark



### Windward Leeward Long

# WL

Course Start, 1L, 2P or 2S, 1L, Finish



Race Marks	GPS Position	Range and Bearing between I			
		From	To	Range n.m.	Beari Mag.
1	N30° 17.798' W81° 40.440'	E	7	2.3	048°
		E	9	1.5	073°
3	N30° 16.723' W81° 40.219'	1	3	1.1	175°
		1	5	2.8	168°
5	N30° 15.013' W81° 39.470'	3	1	1.1	355°
		3	5	1.7	163°
		3	7	3.7	169°
7	N30° 13.312' W81° 39.078'	5	1	2.8	348°
		5	3	1.7	343°
		5	7	1.9	175°
		5	9	2.9	181°
9	N30° 12.272' W81° 39.241'	7	E	2.3	229°
		7	1	4.6	350°
		7	3	3.6	349°
		7	5	1.9	355°
		7	9	1.1	193°
E	N30° 11.700' W81° 40.900'	9	E	1.5	253°
9		5	2.9	001°	
		9	7	1.1	013°

**Note: Mark "E" is no longer a fixed mark. If designated as a mark of the course it will be replaced by an inflatable yellow mark.**