



2015 GBCA Offshore TMCA Spring Fling Offshore Gulf of Mexico May 22nd, 2015



Galveston Bay Cruising Association

1500 Marina Bay Dr. Suite 1592 • Building #113B • Clear Lake Shores, TX

Sailing Instructions

REVISION 1 (5/18/2015)

REVISION 2 (5/19/2015)

1. RULES

1.1 The Race will be governed by The Racing Rules of Sailing (RRS) 2013-2016 including US SAILING Prescriptions, PHRF of Galveston Bay, the Notice of Race and these Sailing Instructions. Autopilot and/or wind-powered self-steering gear are allowed while racing in the TMCA class only. This modifies RRS 52.

1.2. Competitors are reminded that, under the preamble of Part 2 of the R.R.S., when a boat sailing under the rules meets a vessel that is not, the rules require that she comply with the International Regulations for Preventing Collisions at Sea (IRPCAS) or government right-of-way rules. As a result, all racing boats shall obey the Rules of the Road and any applicable Coast Guard standoff zones when encountering vessels not racing or intending to race. This is especially true when encountering commercial traffic; boats failing to do so are subject to protest and disqualification.

1.3 SAFETY CONSIDERATIONS If a skipper determines that it is necessary to use the boat's motor to maneuver in order to avoid interfering with a ship's safe passage, he may do so. However, when motoring, the boat may not advance position, and may only use the motoring for clearing the ship passage lane. Once cleared, the boat shall immediately cease motoring. This modifies RRS 42. As soon as practical, the skipper shall advise the Race Committee of any action taken in accordance with this rule.

The following RRS are modified herein:

Sailing Instruction 1.2 modifies RRS 42

Sailing Instruction 5.2 modifies RRS 62.1(a)

Sailing Instruction 8.2 & 8.3 modifies RRS 26

Sailing Instruction 11 modifies RRS 61

Sailing Instruction 13 modifies RRS 35

2. NOTICES TO COMPETITORS

Notices to Competitors will be posted at:

https://www.regattanetwork.com/clubmgmt/applet_club_events.php?CLUB_ID=162 .

3. CHANGES TO THE SAILING INSTRUCTIONS

Any change to the sailing instructions or notice of race will be posted before 2200 on the day prior that it will take effect.

4. WARNING SIGNAL

The first start time will not be before 0500 hours.

5. RADIO COMMUNICATION

5.1 Radio communication will be conducted on VHF channel 72.

5.2 In addition to signaling Individual Recalls in accordance with RRS 29.1, as a courtesy, the Race Committee will attempt to broadcast the names or sail numbers of boats that have started early. Failure to make such a broadcast, failure of a boat to receive that broadcast, a boat's order in that broadcast, or the promptness of that broadcast will not be grounds for redress. This modifies RRS 62.1(a).

6. CHECK-IN PROCEDURE

All yachts intending to race shall check in with the Race Committee on VHF Channel 72 30 minutes prior to their starting time as determined from Appendix B.

7. START LINE

7.1 The Starting Line is a line between Galveston Channel Green # 11 and a staff displaying an orange flag on or near a Race Committee Signal Vehicle ashore. The Race Committee will try to place the orange flag on a line between Marker #11 and Texas City Outer Range Tower A, but in any event the orange flag will be the endpoint of the line.

8. THE START

8.1 This is a reverse start (pursuit) race, with the start time for each boat based on its PHRF type handicap rating following the 05:00 hour time. **The starting times are assigned on a per-class basis, that is, the largest handicap value in that class will begin at the base start time.** See the accompanying Appendix B to determine the assigned boat start times. This modifies RRS 26. Note: The time displayed on a GPS receiver is the same as that transmitted on WWV. WWV broadcasts may be accessed by phone at: (303) 499-7111.

8.2 The Race Committee will give no additional starting signals, except to monitor and call individual boats On Course Side (OCS) prior to their assigned start time with sound and the individual recall flag. This modifies RRS 26. Any boat(s) signaled as OCS at their respective starting time may thereafter sail from the course side across the starting line or one of its extensions to the pre-start side before starting, or continue on and take a 20% penalty. Note: The Race Committee cannot signal a boat is OCS until her starting time has arrived.

The Race Committee *may* broadcast occasional time checks on VHF 72 until all boats have started.

9. THE COURSE

| Mark | Approximate Coordinate | Distance | Total Cumulative Distance | Description |
|--|---------------------------------|----------|---------------------------|--|
| Leave all turning mark to port. | | | | |
| Start | N29° 20.540', W094°44.465' | 0 | 0 | Orange flag on South shore and Houston Ship Channel Marker "11"(G "11" Fl G 2.5s) |
| Galveston Jetty 6A | N29° 20.717', W094° 40.522' | 3.46 NM | 3.46 NM | Northern Galveston Jetty Marker 6A (Iso R 6s 30ft 6M "6A" Ra Ref) |
| Sabine Ship Channel 33 | N29° 37.658', W 093° 49.174' | 47.85NM | 51.31NM | Sabine Ship channel Marker 33 ("33", FL G 2.5s) |
| Sabine Ship Channel 27 | N 29° 41.358' W 093° 50.319' | 3.81NM | 55.12NM | Sabine Ship channel Marker 27("27", Q G) |
| Finish | N 29° 41.511', W093°50.344' | 0.15NM | 55.27 | Orange flag on western shore in line with Sabine ship channel lower range "B" {Q 17ft(Day), Q R 20ft(night)} |

Boats shall not interfere with Houston Ship Channel or Sabine Ship Channel Commercial traffic. The Official Course Length is 55.27 nautical miles. A chart showing an overview of the Start and Finish areas are shown as Appendix A. These charts are schematic in nature and are not to be used for navigation.

10. THE FINISH

10.1 Boats shall hail the Race Committee on VHF Channel 72 when passing through Sabine Channel Markers 17 and 18, identifying the boat by name and sail number.

10.2 If the Race Committee does not respond to a boat's hail on VHF Channel 72, the Boat shall be prepared to record her own finish time. Finish time shall be marked when Sabine Channel lower range "B" Mark is at a bearing of 39 degrees from the vessel's helm. GPS time shall be used.

10.3 Boats shall hail the Race Committee again on Channel 72 when preparing to cross the finishing line, identifying the boat by name and sail number. Boats crossing the finish line at night shall display a light on their mainsail number.

10.4 If the Race Committee does not acknowledge a boat at or immediately after her finish, the boat shall provide her finish time, and, if possible, the names of the boats finishing before and after her.

RC will be on station until at least 1700 hrs. Boats finishing after 1700 hrs will take their own finish time, including boat ahead and behind if able and report to the RC. at 281-216-4082.

11. PROTESTS

The protest and redress procedures for this regatta will utilize basic elements of the new RRS Appendix T, a US Sailing Prescription. Protests shall be communicated to the Race Committee before leaving the race area and must be filed in writing within 3 hours of the last boat finishing. This modifies RRS 61. Protests shall be filed with a GBCA representative at Pleasure Island Marina.

12. WITHDRAWING PROCEDURES

The Race Committee places high priority on accounting for every yacht participating in a race. It is imperative that any yacht withdrawing from a race makes its best and most persistent efforts to notify other parties of such withdrawal at the earliest opportunity. Withdrawing yachts should make every effort to contact the Race Committee and/or other nearby yachts to communicate the withdrawal via VHF channel 72. If radio communication is unavailable, call the Race Committee phone number: 281.216.4082 and leave a message. Proper reporting of a withdrawal should include; yacht name, sail number and skipper's name.

13. TIME LIMIT

There is no time limit for this race. Boats finishing after 1700 Hrs Friday should record their own time as described in SI 10.2. This modifies RRS 35.

14. SCORING

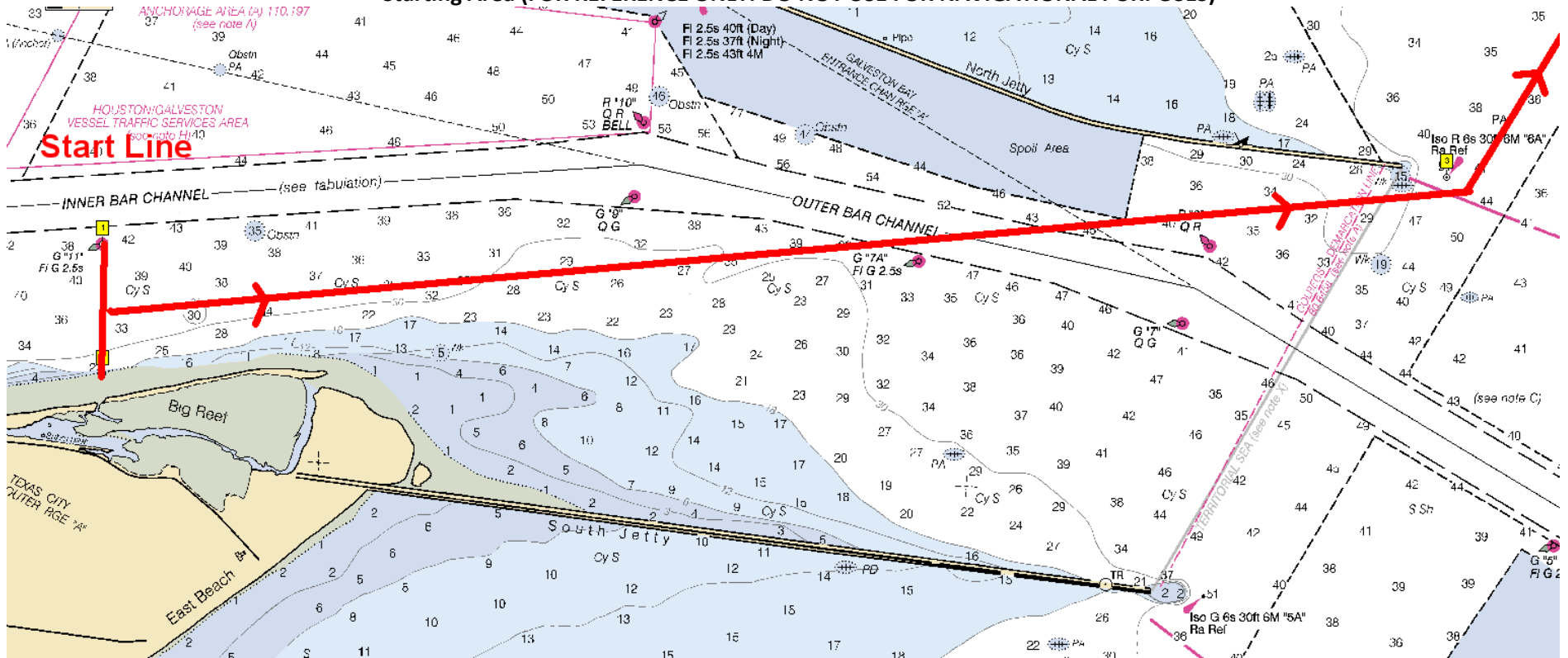
The Race Committee will score the race with reverse start (pursuit) style race using the performance handicapping racing formula, time on distance, for each yacht, as determined by the Race Committee.

15. AWARDS PRESENTATION

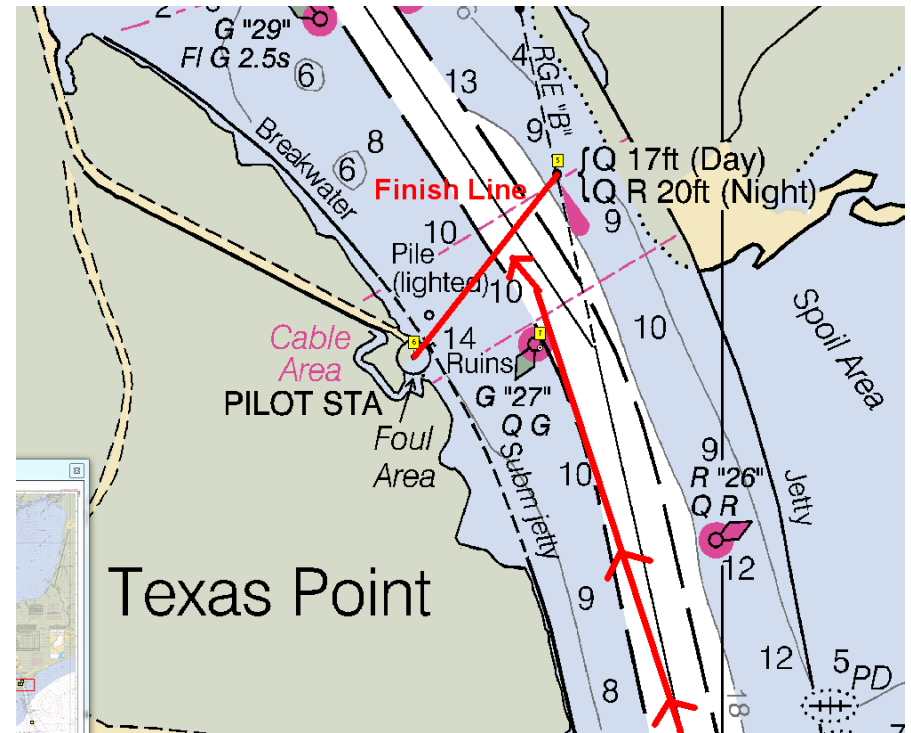
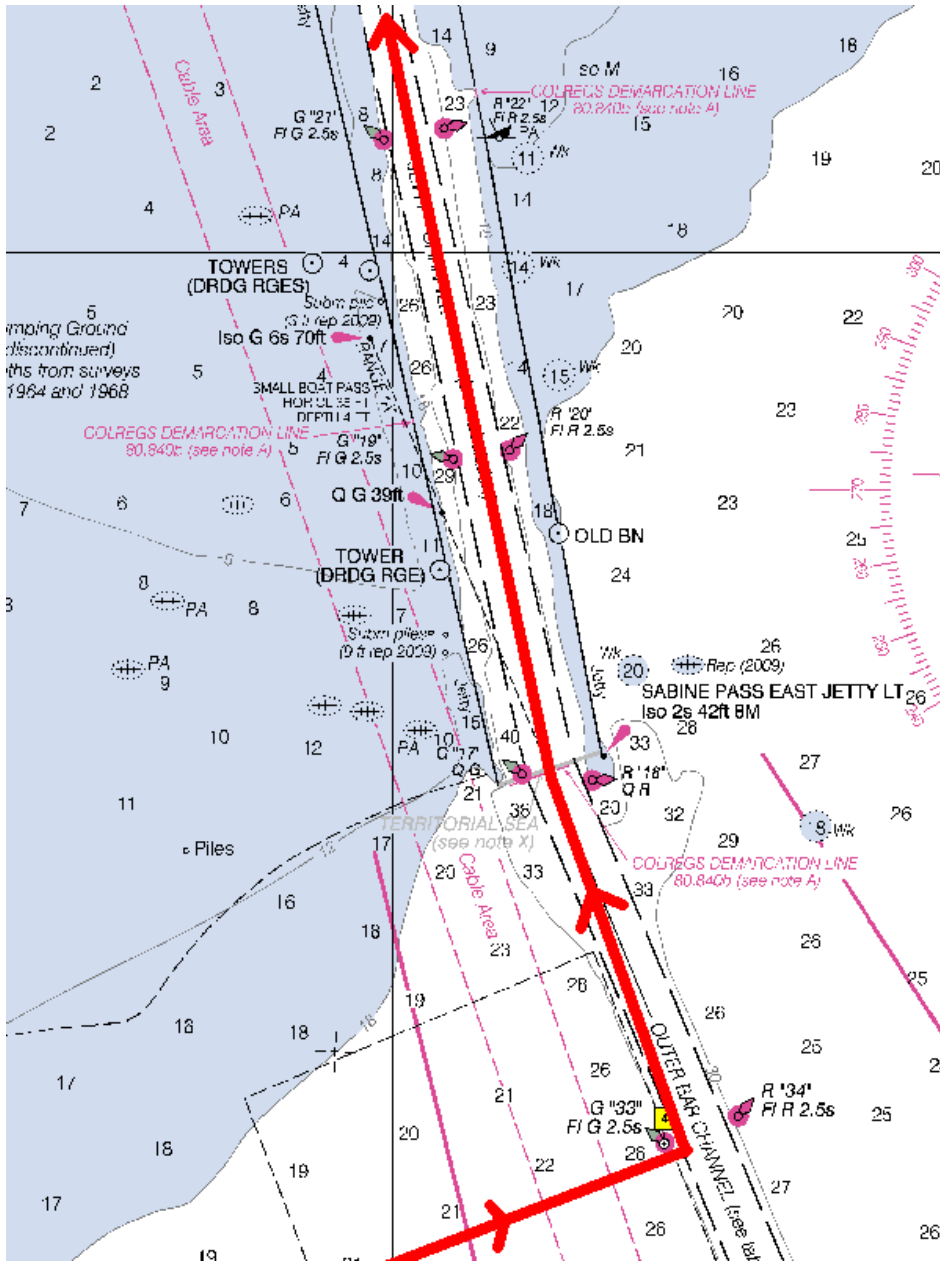
Awards presentation will be at the TMCA Spring Fling Saturday night party during one of the band breaks.

Appendix A

Starting Area (FOR REFERENCE ONLY. DO NOT USE FOR NAVIGATIONAL PURPOSES)



Appendix A Continued
Sabine Channel Entrance and Finishing areas
FOR REFERENCE ONLY. DO NOT USE FOR NAVIGATIONAL PURPOSES



**Appendix B
Pursuit Start Sheet For
Galveston Bay Cruising Association
2015 GBCA Offshore & TMCA Spring Fling
PHRF Spinnaker Class**

Start Time:
Distance:
MAX PHRF:

Limit To Division:

Date: _____

| Start | Sail# | Skipper | Boat Name | Class/Fleet | PHRF |
|---------|-------|------------------|-------------|-------------|------|
| 5:00:00 | 296 | J B Bednar | Stinger | PHRF Spin S | 78 |
| 5:02:46 | 46864 | Greg A Casamayor | Joyride | PHRF Spin S | 75 |
| 5:08:17 | 45 | Andy Wescoat | Harm's Way | PHRF Spin S | 69 |
| 5:41:27 | USA74 | J.D. Hill | Second Star | PHRF Spin S | 33 |

*Indicates PHRF rating was computed from Portsmouth rating [(DPN-55) * 6]

Created by Regatta Network -- Online Sailing Event Registration and Management Services.
© 2005 Regatta Network, All Rights Reserved. <http://www.regattanetwork.com/>

**Appendix B
Pursuit Start Sheet For
Galveston Bay Cruising Association
2015 GBCA Offshore & TMCA Spring Fling
PHRF Non-Spinnaker Class**

Start Time:
Distance:
MAX PHRF:

Limit To Division:

Date: _____

| Start | Sail# | Skipper | Boat Name | Class/Fleet | PHRF |
|---------|-------|------------------|-----------------------|-----------------|------|
| 5:00:00 | 130 | John Mastroianni | Andiamo | PHRF NonSpin NS | 235 |
| 5:16:34 | none | Wayne Alderman | Stardust | PHRF NonSpin NS | 217 |
| 5:36:50 | 12440 | James Apple | Tenacious | PHRF NonSpin NS | 195 |
| 6:03:33 | 444 | GILBERT GARCIA | Escape Hatch | PHRF NonSpin NS | 166 |
| 6:30:16 | 001 | Brantly Minor | Other Woman | PHRF NonSpin NS | 137 |
| 6:49:37 | 306 | Joe Powers | Josephine | PHRF NonSpin NS | 116 |
| 6:54:13 | 40707 | Walter Caldwell | SHAKEN NOT STIRRED | PHRF NonSpin NS | 111 |
| 7:08:02 | 168 | Walter Barnett | Osprey | PHRF NonSpin NS | 96 |

*Indicates PHRF rating was computed from Portsmouth rating [(DPN-55) * 6]

Created by Regatta Network -- Online Sailing Event Registration and Management Services.
© 2005 [Regatta Network](http://www.regattanetwork.com/), All Rights Reserved. <http://www.regattanetwork.com/>

**Appendix B
Pursuit Start Sheet For
Galveston Bay Cruising Association
2015 GBCA Offshore & TMCA Spring Fling
GBCA Club Handicap Class**

Start Time:
Distance:
MAX PHRF:

Limit To Division:

Date: _____

| Start | Sail# | Skipper | Boat Name | Class/Fleet | PHRF |
|---------|-------|---------------|-------------------|-------------------------|------|
| 5:00:00 | 514 | Todd Johnson | Morning Sun | GBCA Club Handicap G | 301 |
| 5:13:49 | 55 | Charles Scott | GEMINI | GBCA Club Handicap G | 286 |
| 6:24:45 | 133 | Ron Eddleman | Stellar of Course | GBCA Club Handicap G | 209 |
| 6:32:07 | 3371 | Bill Jenko | Sea Gypsy | GBCA Club Handicap G | 201 |
| 6:39:29 | 655 | Robert Crosby | Royal Crescent | GBCA Club Handicap G | 193 |

*Indicates PHRF rating was computed from Portsmouth rating [(DPN-55) * 6]

Created by Regatta Network -- Online Sailing Event Registration and Management Services.
© 2005 [Regatta Network](http://www.regattanetwork.com/), All Rights Reserved. <http://www.regattanetwork.com/>

**Appendix B
Pursuit Start Sheet For
Galveston Bay Cruising Association
2015 GBCA Offshore & TMCA Spring Fling
TMCA Class**

Start Time:
Distance:
MAX PHRF:

Limit To Division:

Date: _____

| Start | Sail# | Skipper | Boat Name | Class/Fleet | PHRF |
|---------|-------|---------------------|---------------|-------------|------|
| 5:00:00 | 760 | Jimmy Jones | Island Time | TMCA T | 193 |
| 5:23:02 | N/A | David Glascock | Shell Seaker | TMCA T | 168 |
| 5:38:41 | None | deneen taylor | Coconut | TMCA T | 151 |
| 5:42:22 | 9 | Sam Crowder | LONGHAWK | TMCA T | 147 |
| 6:01:43 | 1234 | DARRELL McANELLY | GYPSE WIND | TMCA T | 126 |
| 6:18:18 | None | Bryan Austin | Austintatious | TMCA T | 108 |
| 6:34:53 | none | Ken Hutchinson | Nautilus | TMCA T | 90 |

*Indicates PHRF rating was computed from Portsmouth rating [(DPN-55) * 6]

Created by Regatta Network -- Online Sailing Event Registration and Management Services.
© 2005 [Regatta Network](http://www.regattanetwork.com/), All Rights Reserved. <http://www.regattanetwork.com/>